

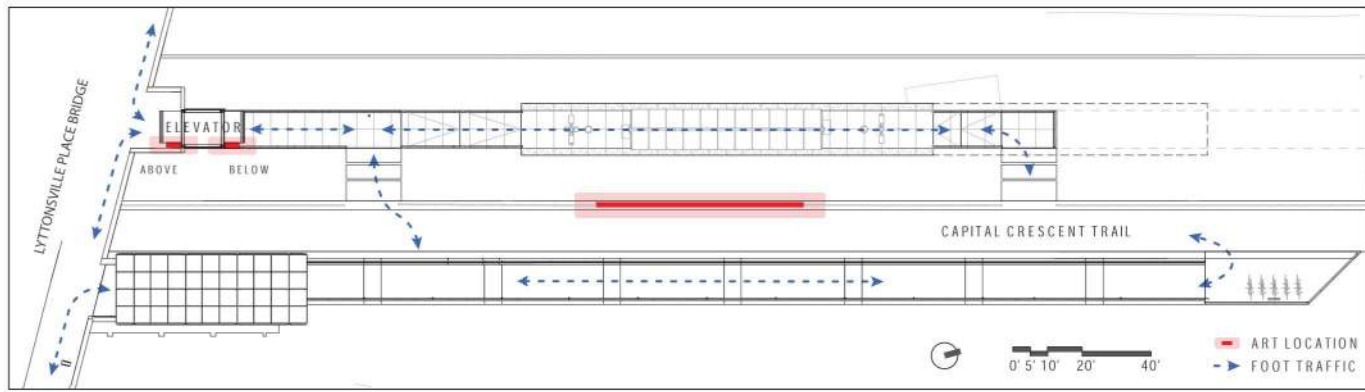
PURPLE LINE

Art-in-Transit

Lyttonsville

David Hess:

Hess Industries, LLC



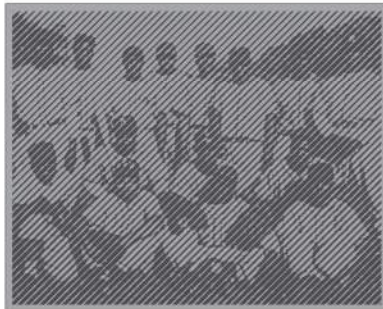
SITE INTEGRATION

To commemorate the historic Talbot Street Bridge, we propose relocating the Bridge's two main steel girders to the Lyttonville Purple Line Station.

One girder will be mounted horizontally on a 12" tall concrete plinth between the Capital Crescent Trail and the rail line.

The other girder will be cut into two pieces and oriented vertically beside the upper and lower entrances of the elevator tower.

Waterjet-cut stainless steel panels will be attached to both sides of both girders archiving the history of the Lyttonville Community.



PUBLIC CALL
Lyttonville citizens will be encouraged to submit family photographs celebrating the community in this sculptural photo album.



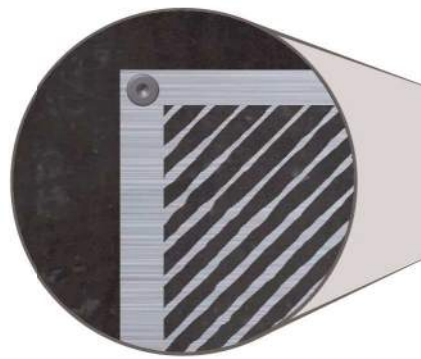
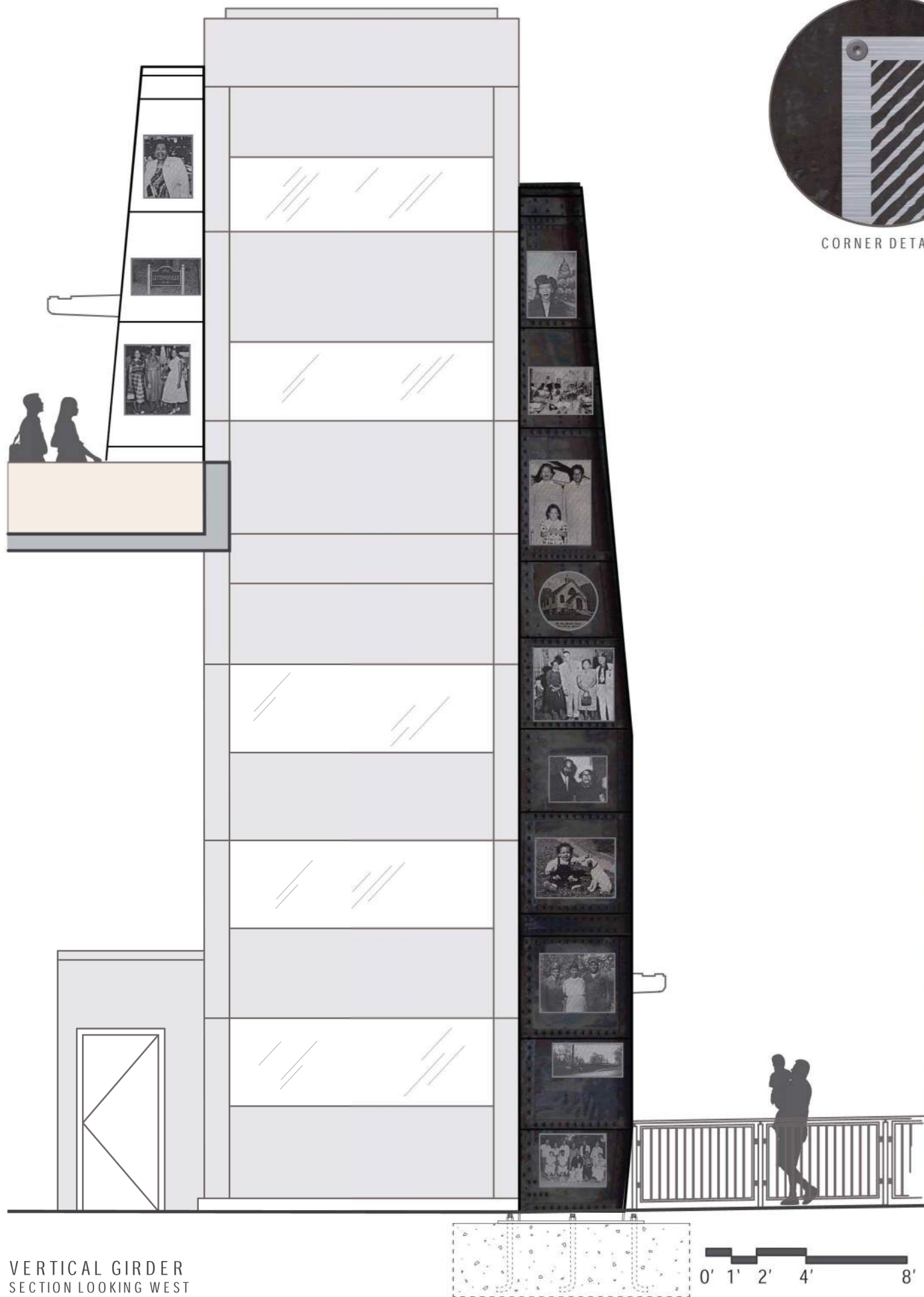
PERSPECTIVE RENDERING
FROM CAPITAL CRESCENT TRAIL SOUTHBOUND

SAMPLE IMAGE PANELS
SOURCED FROM LYTTONSVILLE COMMUNITY



HORIZONTAL GIRDER
ELEVATION FROM PLATFORM

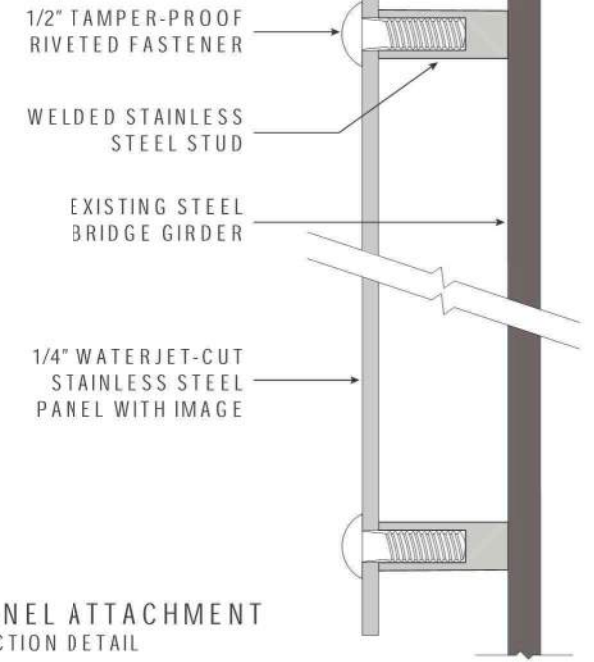




CORNER DETAIL



STAINLESS STEEL PANEL MOUNTED ON GIRDER



PANEL ATTACHMENT SECTION DETAIL



PERSPECTIVE RENDERING FROM LYTTONSVILLE PLACE BRIDGE SOUTHBOUND



WATERJET-CUT 1/4" ALLOY 316 STAINLESS STEEL PLATE



Lyttonsville

PURPLE LINE

Art-in-Transit

Curtis Woody

REP PLT4-S-803



WEST SIDE WALL MURAL

THIS MURAL IMAGE IS A MIXED MEDIA CONCEPT REPRESENTATION OF LYTTONSVILLE HISTORICAL COMMUNITY. THE COMPLETED DESIGN WILL EVOCATE CULTURAL AFFIREMATION OF A SOLID AFRICAN AMERICAN COMMUNITY. THE IMAGE WILL BE DIGITALLY TRANSFER ONTO CERAMIC TILE, KILN-FIRED FOR QUALITY, CLARITY AND DURABILITY AND INSTALLED ONTO CONCRETE FEATURE WALL. THE MURAL IS 100 FEET IN LENGTH, 5 FEET IN HEIGHT ON LOWER EDGE, 10 FEET IN HEIGHT ON HIGHER EDGE.



EAST SIDE WALL MURAL

THIS MURAL IMAGE IS A MIXED MEDIA CONCEPT REPRESENTATION OF LYTTONSVILLE HISTORICAL COMMUNITY. THE COMPLETED DESIGN WILL EVOCATE CULTURAL AFFIREMATION OF A SOLID AFRICAN AMERICAN COMMUNITY. THE IMAGE WILL BE DIGITALLY TRANSFER ONTO CERAMIC TILE, KILN-FIRED FOR QUALITY, CLARITY AND DURABILITY AND INSTALLED ONTO CONCRETE FEATURE WALL. THE MURAL IS 100 FEET IN LENGTH, 5 FEET IN HEIGHT ON LOWER EDGE, 10 FEET IN HEIGHT ON HIGHER EDGE.

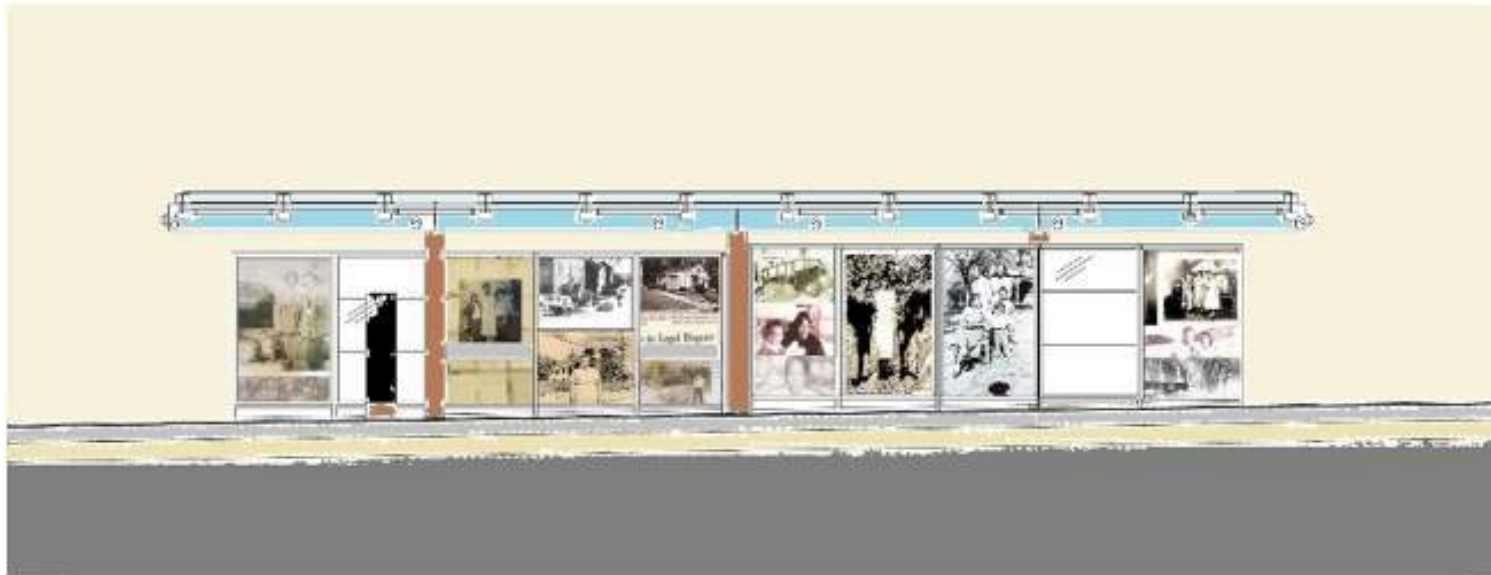
EXAMPLE OF FINISHED MIXED MEDIA PAINTING



ALUBRIA: MIXED MEDIA PAINTING AT TANGER OUTLETS, NATIONAL HARBOR

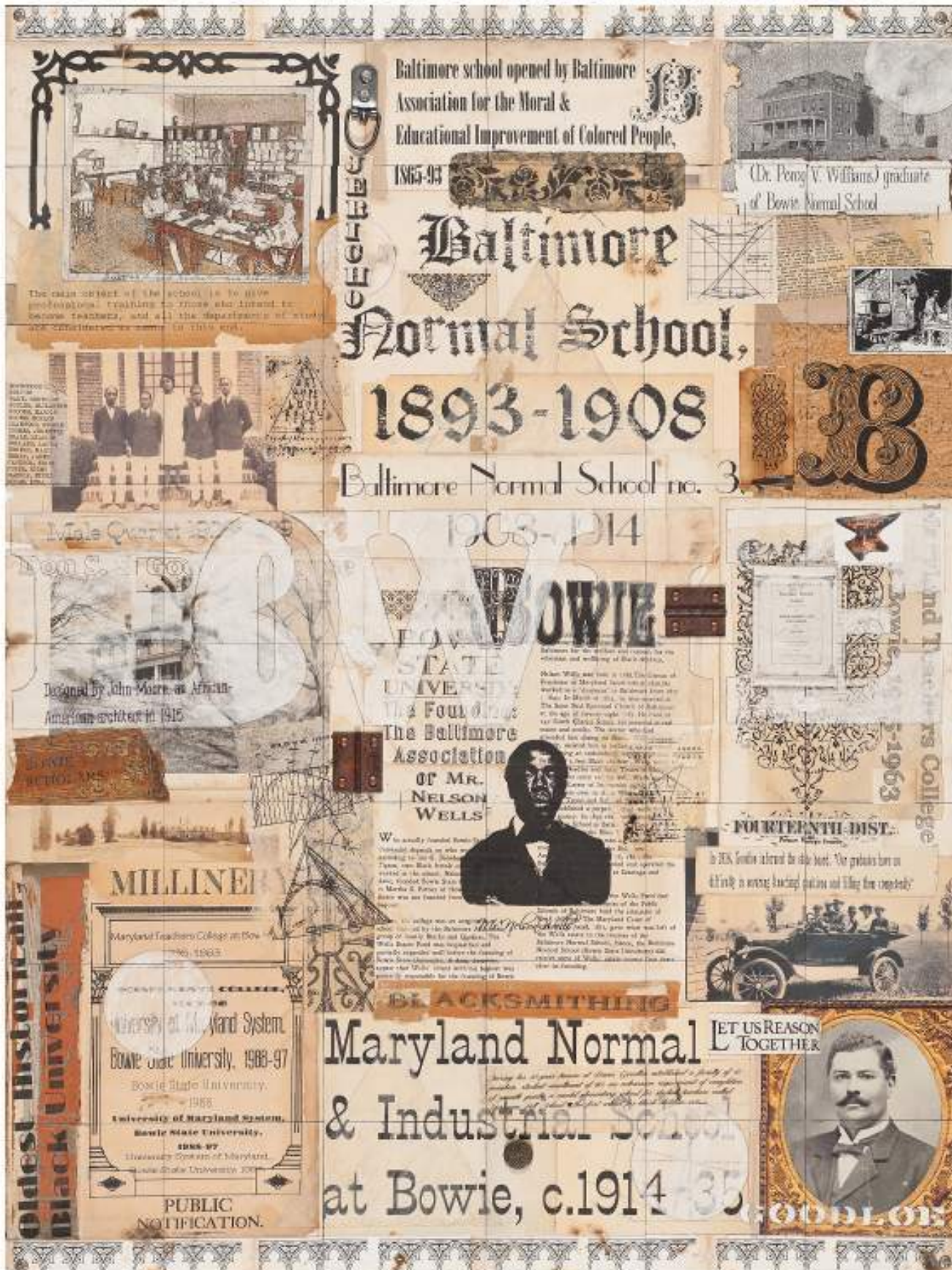
12'x68'

REP PLT4-S-803



IMAGERY: GLASS IN WINDSCREEN
 THE GLASS IN WINDSCREENS ARE CONCEPT REPRESENTATIONS OF LYTTONSVILLE HISTORICAL COMMUNITY. THE EIGHT COMPLETED DESIGNS ARE MENT TO EVOCATE CULTURAL AFFIRMATION IMAGES OF A SOLID AFRICAN AMERICAN COMMUNITY.

EXAMPLE OF FINISHED MIXED MEDIA PAINTING



OPPORTUNITY FOR CHANGE: MIXED MEDIA PAINTING BOWIE STATE UNIVERSITY