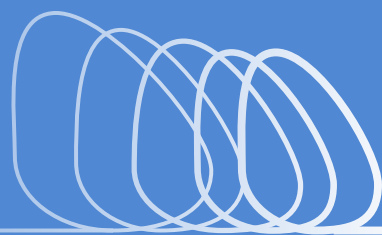


PURPLE LINE

Art-in-Transit

16th Street-Woodside

John Ruppert



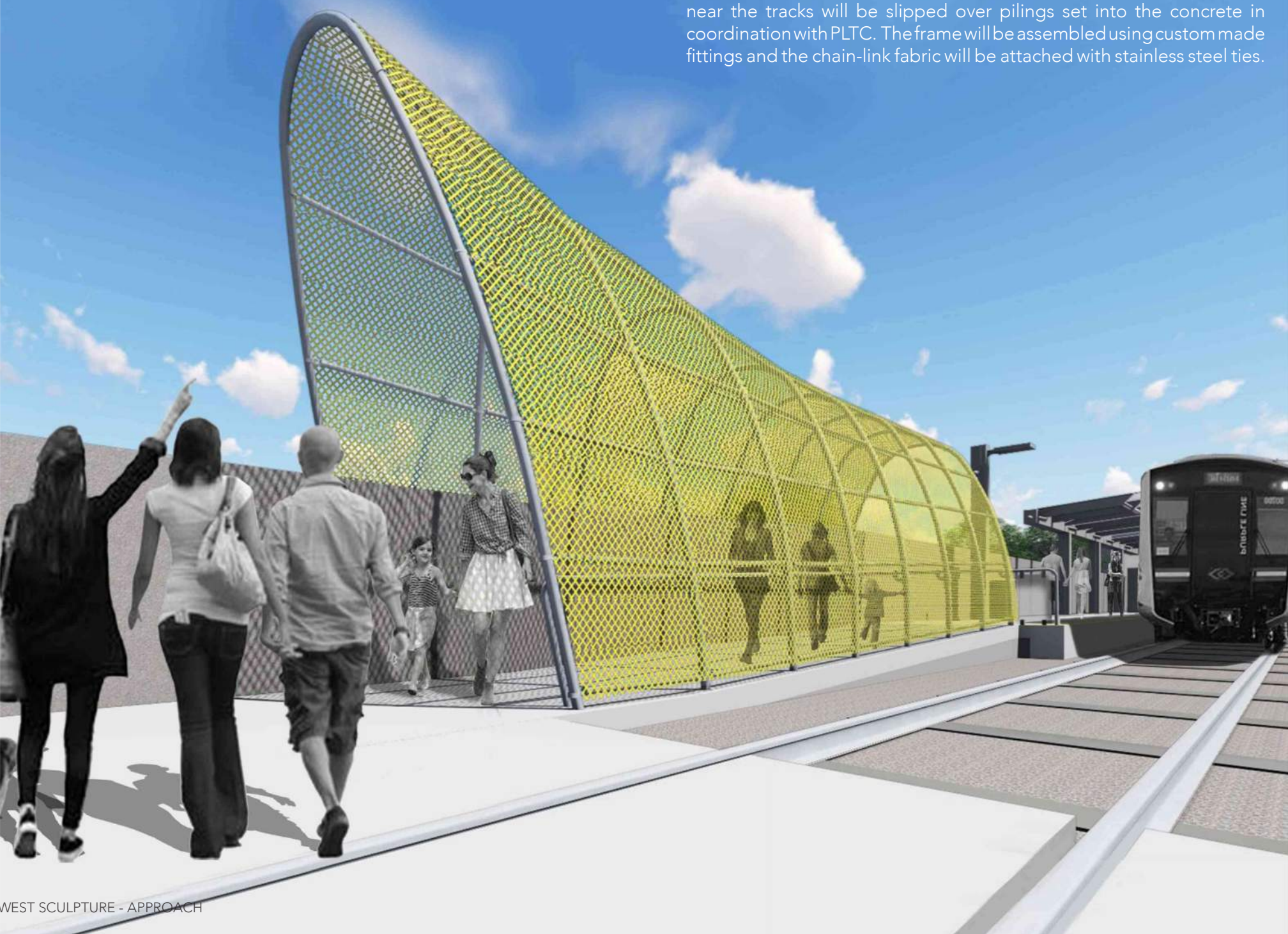
Passage

at WOODSIDE STATION

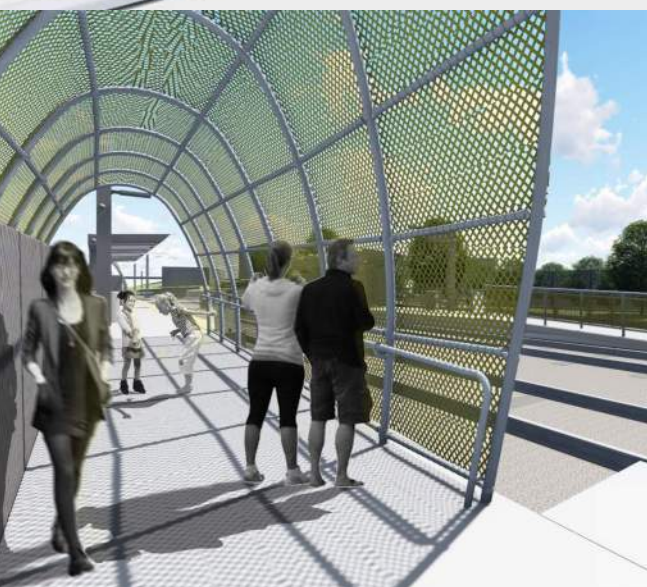
"Passage" is a pair of funnel-like structures at opposite entrances of the north platform. The frame is made of brushed stainless steel with a polished stainless steel railing. The mesh membrane is made of yellow vinyl powder coated chain-link fabric (1 ½" x 1 ½") squares.

The space between the station canopy structure and the entrance of the platform are different distances making the sculptural forms slightly different in length. While both structure's arched openings are identical their lengths are different. The outside entrance openings are 16' high, 8' wide, while the inside openings are 12' high, 8' wide. The west structure is 36' long and the east structure is 28' long. The total weight of both structures is approximately 5,700 lb.

Most fabrication will be done off site. The vertical arches will be bolted into the top of the crash wall with a concrete anchor system. The footing near the tracks will be slipped over pilings set into the concrete in coordination with PLTC. The frame will be assembled using custom made fittings and the chain-link fabric will be attached with stainless steel ties.



WEST SCULPTURE - APPROACH



WEST SCULPTURE - ENTRANCE THRESHOLD



SOUTH PLATFORM - SCULPTURAL FENCE

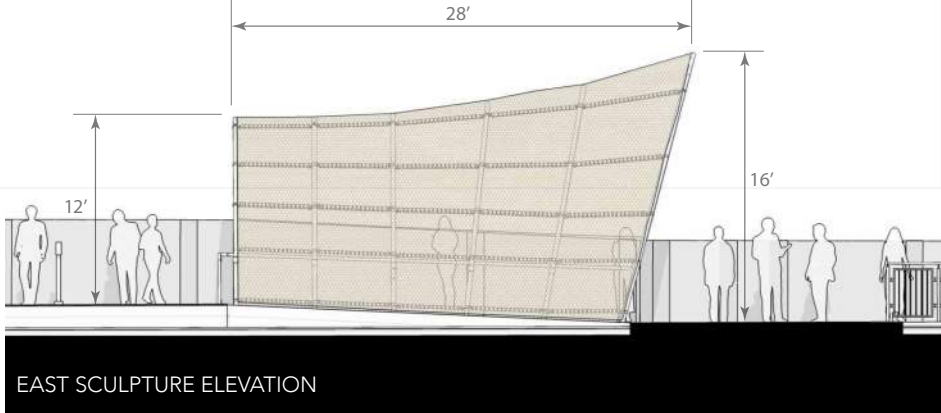
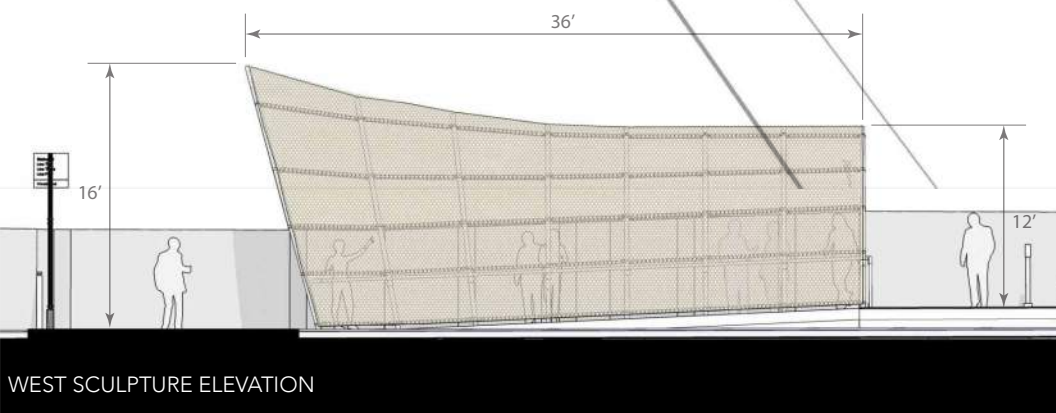
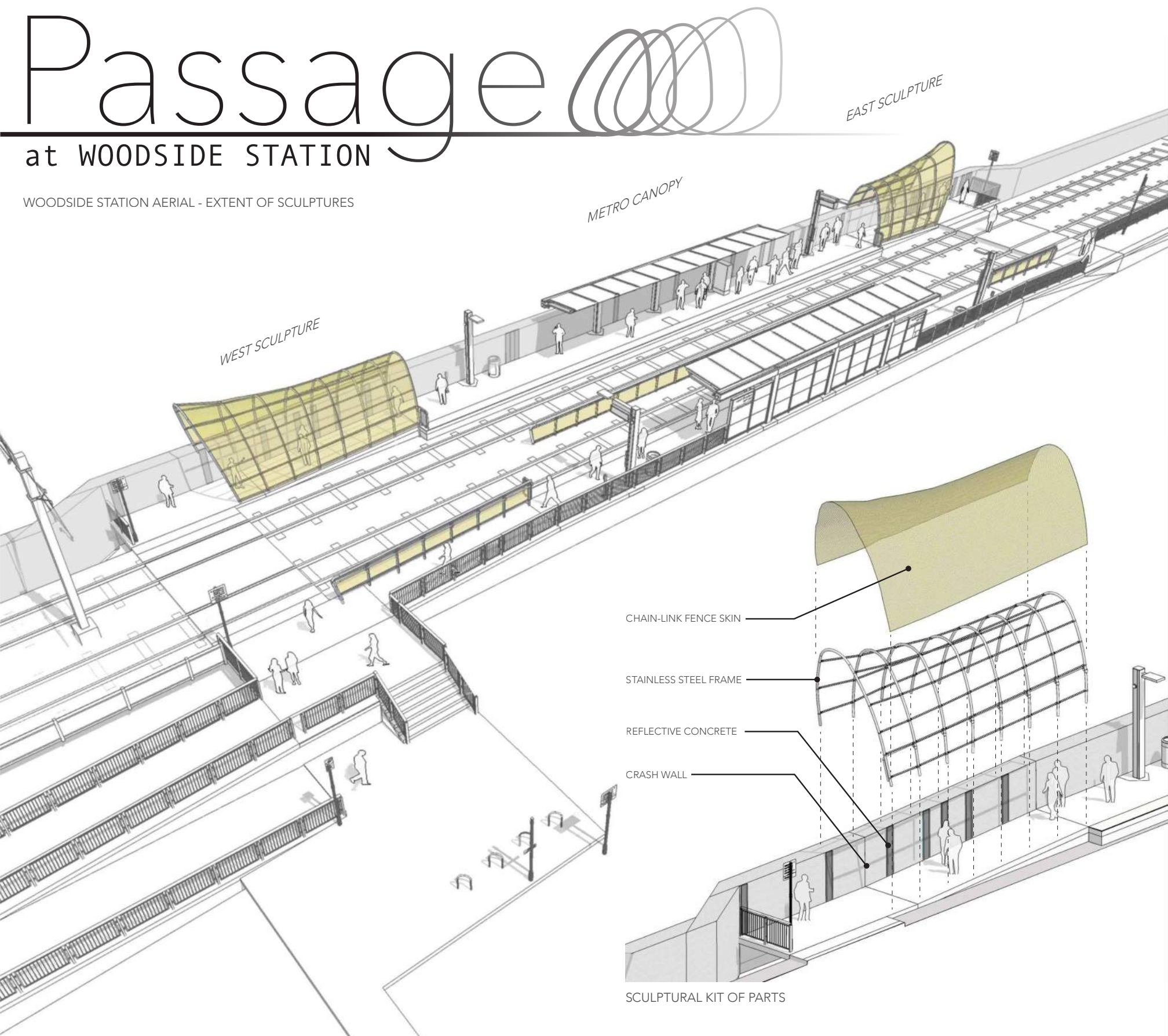


EAST SCULPTURE - APPROACH

Passage

at WOODSIDE STATION

WOODSIDE STATION AERIAL - EXTENT OF SCULPTURES



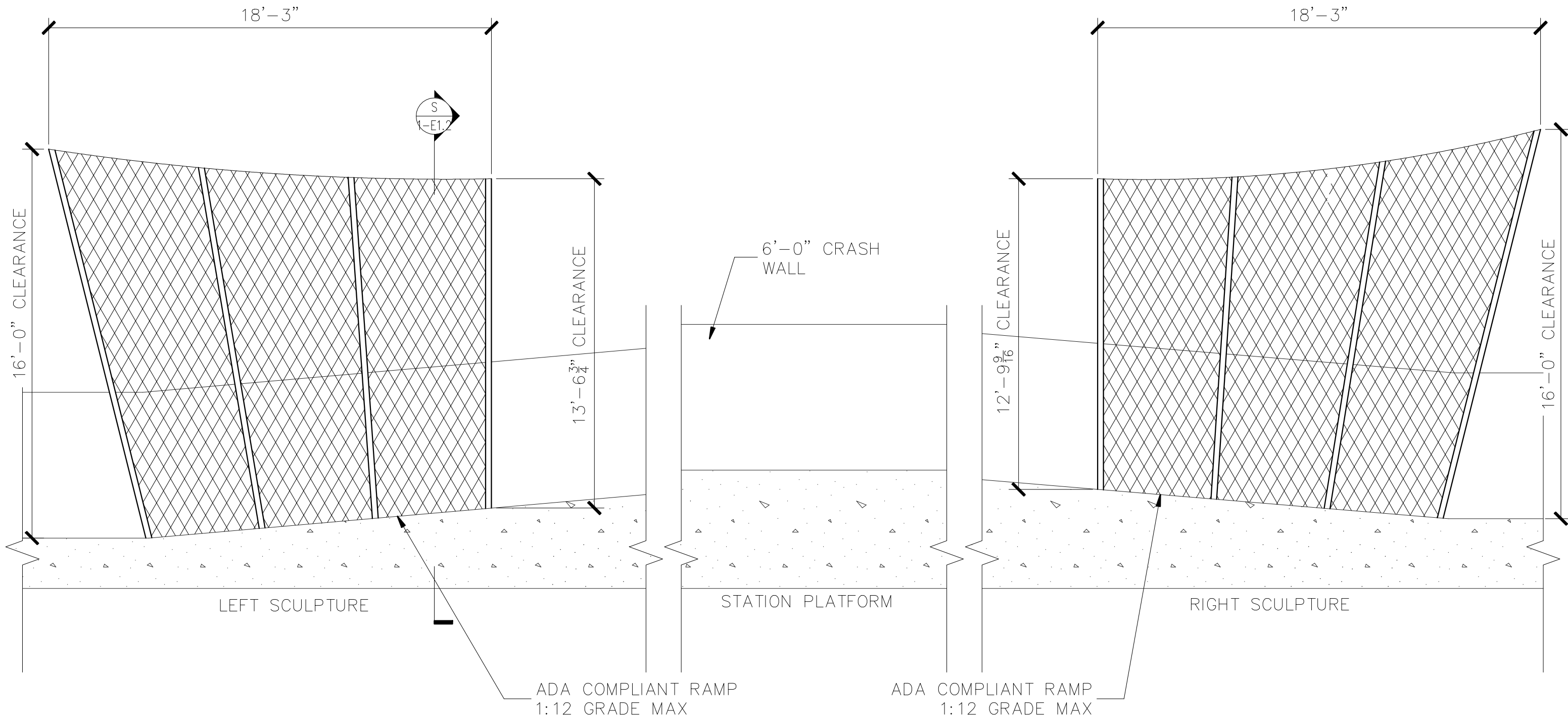
REPETITION AT MULTIPLE SCALES

As a function of construction both sculptures contain a high degree of repetitive features. The repetition created by the structural framework, connection pieces, and fencing anchors has been arranged to create a sense of horizontal dynamism. The sculptures appear to reach out as if to both receive and move with each passing train. To further engage site elements the sculpture's vertical members maintain a 5 ft. spacing picking up similar metrics created by the rail-line tracks and platform fences.

CONNECTION DETAIL



LONGITUDINAL SECTION THROUGH SCULPTURES



E
1-E1.1

PURPLE LINE SCULPTURE ELEVATION

SCALE: 1/4"=1'-0"