



Glenridge/New Carrollton

CAT Meeting #2
May 15, 2018



Welcome



Ground Rules for a Successful Meeting

- Everyone is treated courteously and with respect – no rude comments please
- Take turns, talk one at a time, and limit side conversations
- Everyone should feel welcome to participate
- Differing opinions are welcome
- Start on time; respect everyone's time
- General public may attend the CAT meetings and can offer questions or comments during the last 15 minutes of every meeting.



Introductions of Key Staff and Stakeholders

Glenridge/New Carrollton

Veterans Parkway, Ellin Road to New Carrollton

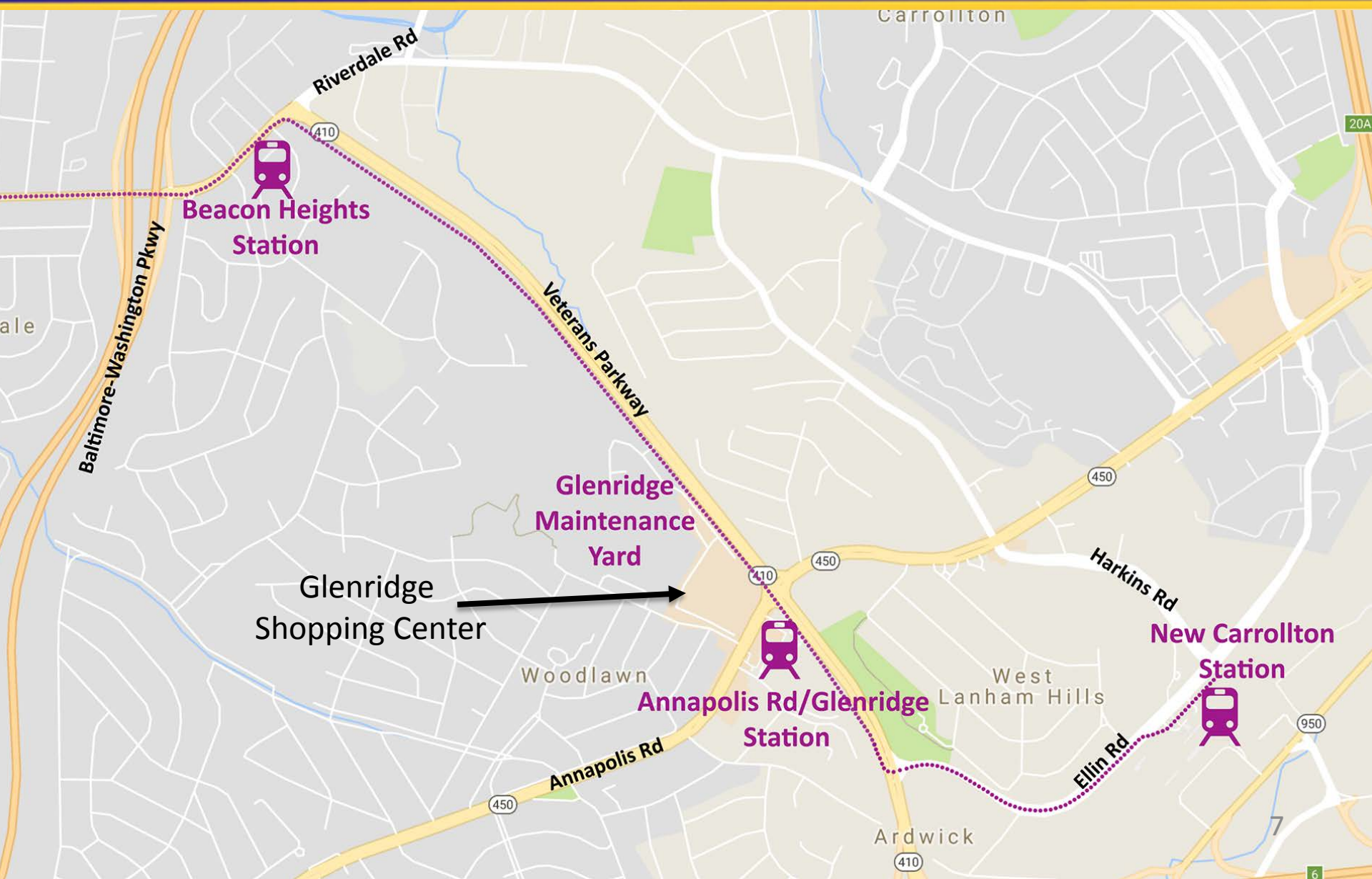
May 15, 2018

Presented by:

Tim Pinkerton—Area 3 Manager

Outline

- Project overview
- Construction update
- 6-month look ahead
 - Utility work
 - Staging of work along Veterans Parkway, intersection of Veterans Parkway and Annapolis Road, Veterans Parkway to Hanson Oaks Drive
 - Pedestrian safety
- Business outreach
- Transit outreach
- Questions



Construction update—what's been done

- Surveys
- Set up environmental controls
- Review design/engineering/constructability
- Preparation of Glenridge Yard site
- Demolition of Dulce de Vida bakery and Bank of America drive-thru
- Conducted maintenance of traffic and closed shoulder along Veterans Parkway
- Cleared and grubbed along Veterans Parkway and Ellin Road

May—December 2018 look ahead

- Start overhead and underground utility relocation at intersection of Veterans Parkway and Annapolis Road
 - Power
 - Communications
 - Gas
 - Water
 - Sewer
 - Storm drains

May—December 2018 look ahead *(cont.)*

- Grading Glenridge Yard to establish building pad
- Start construction of Glenridge Operation and Maintenance Facility
- Start wall construction along Veterans Parkway and in the Glenridge Yard
- Veterans and Annapolis Road intersection reconstruction
- Traffic signal reconstruction and timing adjustments
- Reconstruction of Ellin Road

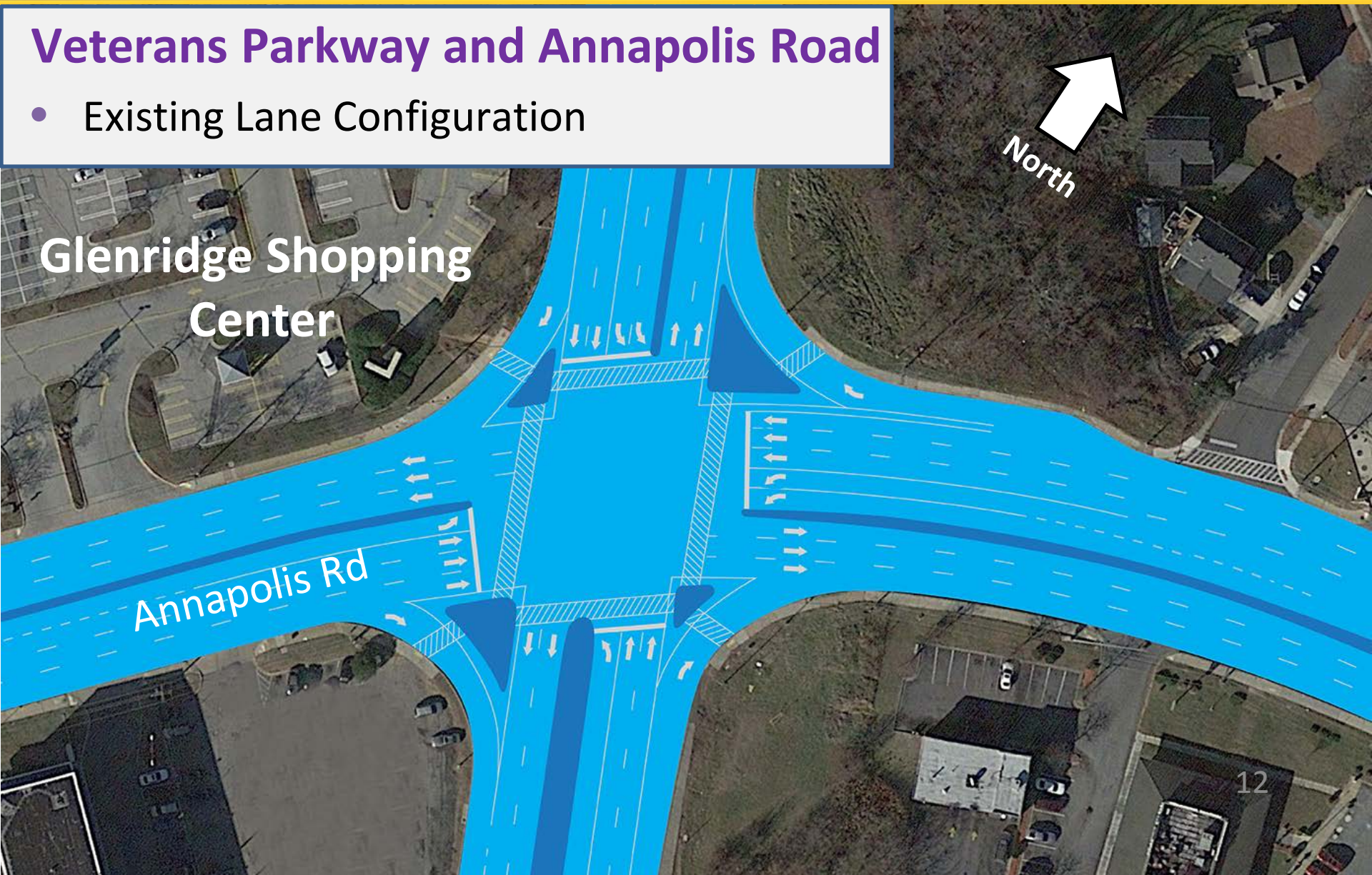
Utility work

- Install new utility poles
- Move overhead lines after poles are installed
- Coordinate localized work zones with lane closures
- Underground utilities will follow overhead work
- Utility companies will notify of any service interruptions
- All efforts will be made to minimize disruptions



Veterans Parkway and Annapolis Road

- Existing Lane Configuration



**Glenridge Shopping
Center**

Annapolis Rd

North

Veterans Parkway and Annapolis Road

- Additional Left Turn Lane

Glenridge Shopping
Center

Annapolis Rd

North

Key:

Work Zone: 

Veterans Parkway and Annapolis Road

- Fall 2018 Temporary Lane Configuration

Glenridge Shopping
Center

Annapolis Rd

North

Key:

Work Zone: 

Veterans Parkway and Annapolis Road

- Summer 2019 Temporary Lane Configuration

Glenridge Shopping
Center



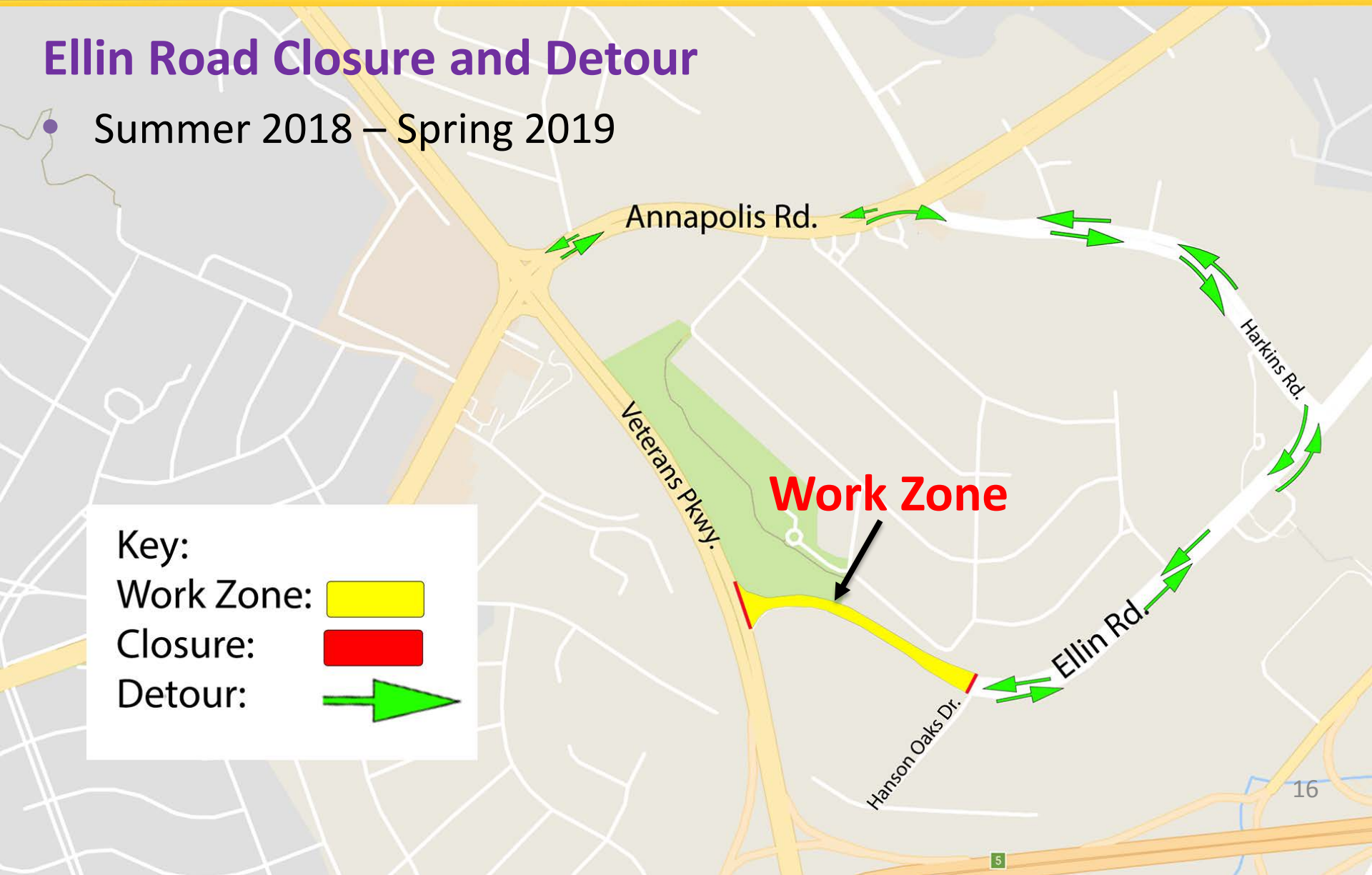
Annapolis Rd

Key:

Work Zone: 

Ellin Road Closure and Detour

- Summer 2018 – Spring 2019



Pedestrian safety

- Pedestrian detours will be clearly signed
- When closures occur, alternate access will be provided
- Pedestrian access will be maintained to businesses and residents
- Pedestrian crossings at Annapolis Road will be maintained
- Work zones will be marked
- **Pedestrians are urged to obey construction signage and keep out of work zones**



Business outreach

- Work with businesses impacted by construction on an individual basis
- Vehicle and pedestrian access to all businesses will be maintained during construction
- Work with businesses to make sure deliveries are accommodated during construction
- Provide “Open for Business” signage where appropriate
- Outreach efforts coordinated in English and Spanish as needed

Transit coordination

Purple Line team is working with Prince George's County and has met with agencies operating:

- MetroBus
- TheBus (Prince George's Co.)

Coordination could include

- Bus stop relocations
- Route modifications



Construction work hours

- Standard work week is 40 hours
- Make up / maintenance day will be Saturday
- Typical day shift: 7 AM – 5 PM
- Typical night shift: 8 PM – 4:30 AM
- Typical traffic lane closure: 9 AM – 3 PM

Stay up to date on Purple Line progress

- Sign up for construction notices at **Purplelinemd.com**
- For construction related questions and concerns, contact PLTP:
 - Email at outreach@pltcllc.com
 - 24/7 hotline at **240-424-5325**
- For general project questions and comments, contact MTA public outreach:
 - Email at outreach@purplelinemd.com
 - Call **443-451-3706** or **443-451-3705 (Español)**