



Long Branch

CAT Meeting #3
October 16, 2018

Carla Julian

PLTC Sr. Manager Public
Affairs/Community Outreach

Jean-Marc Wehrli

PLTC Area 2 Manager

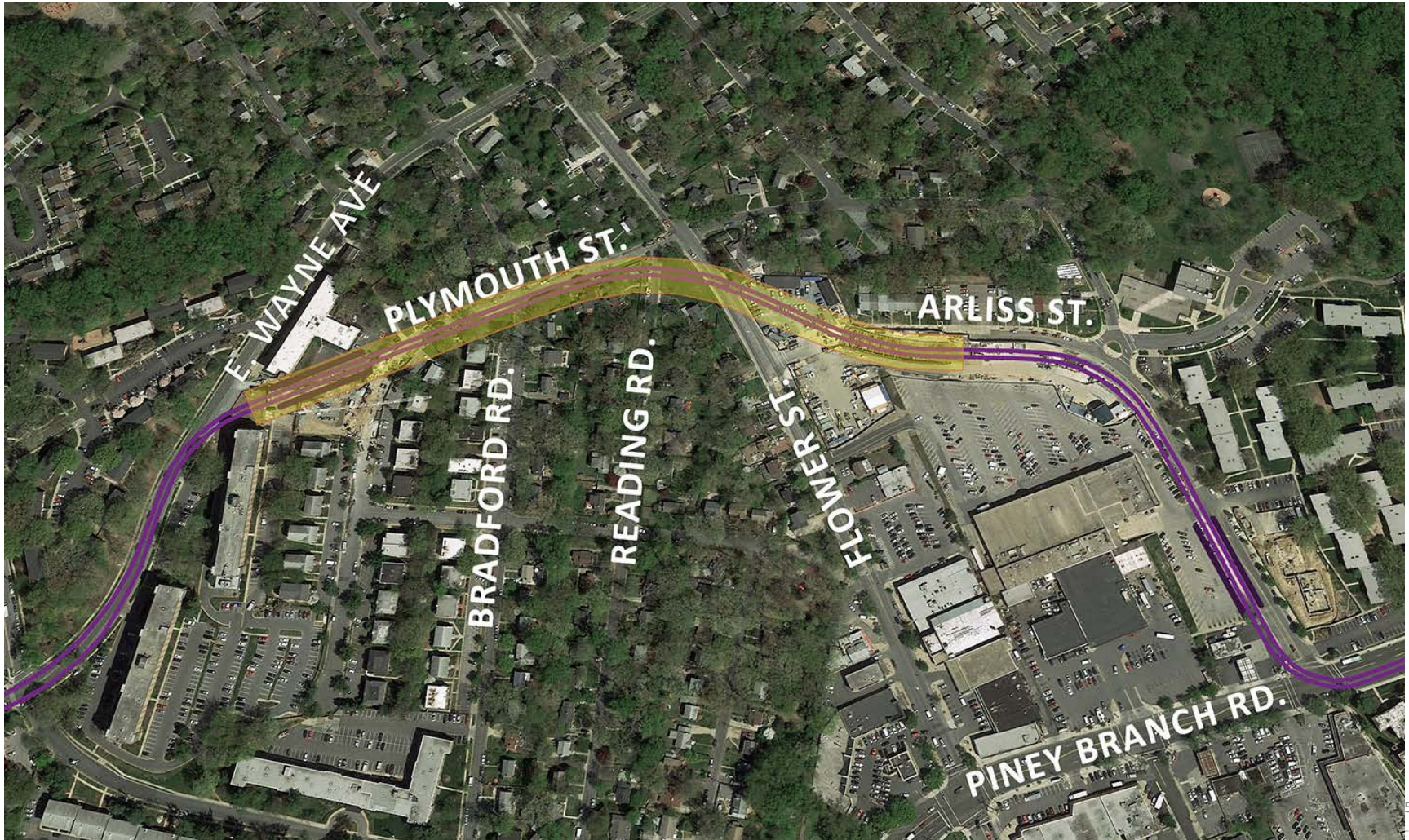
MEETING OVERVIEW

- Plymouth Tunnel Background
- Construction Overview
 - Progress pictures
- Pre-Construction Survey
- Blasting FAQs
- Construction Work Hours
- Maintenance of Traffic & Pedestrian Safety
- Community & Business Outreach
- Questions & Answers

TUNNELING WORK AT PLYMOUTH ST.

- Tunnel excavation began in June 2018 and will continue through Spring of 2019
- Tunnel construction is permitted to occur 24/7 to meet MDOT MTA's goal of a 2022 service date
- Project noise requirements do not apply at the Plymouth Tunnel
- Excavation meets the project's vibration requirement under the contractual limit of 0.2 inches/second
- Blasting will occur, when needed, due to varying rock conditions
 - Residents will that have signed up for construction notices will receive notice electronically 24 hours before blasting is to occur

PLYMOUTH TUNNEL AERIAL OVERVIEW



WORK COMPLETE *(AS OF OCTOBER 2018)*

Arliss St. / Flower Ave.

- Pre-construction surveys completed for residents/properties who elected to have them performed (within 500 feet of the tunnel)
 - Surveyed 141 of 146 properties
 - 5 property owners either declined or were non-responsive
- Monitoring equipment installed along the tunnel alignment
- Utility relocations are ongoing
- Tunneling excavation has commenced, including 24 hour shift work
- Blasting occurred on two days the week of October 1st
 - 3 test blasts were conducted
 - 2 production blasts occurred

WORK COMPLETE *(AS OF OCTOBER 2018)*

East Wayne Ave. / Plymouth St.

- Utility relocations are ongoing
- Tower crane was erected at Manchester Place to install drilled shafts for the excavation and foundation of the Manchester Place Station
- Soldier pile installation for the Plymouth Tunnel and Manchester Place Station will be completed mid-October
- Temporary parking lot relocation has been completed at Kenwood House

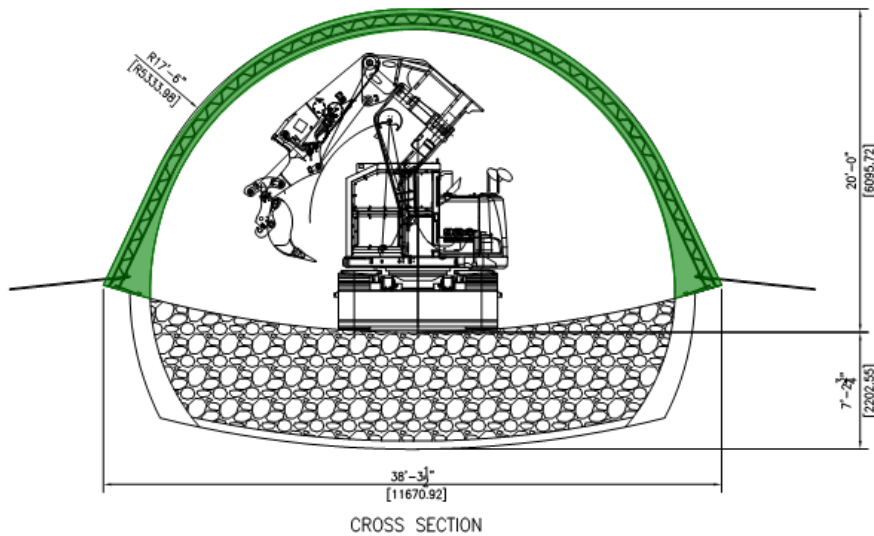
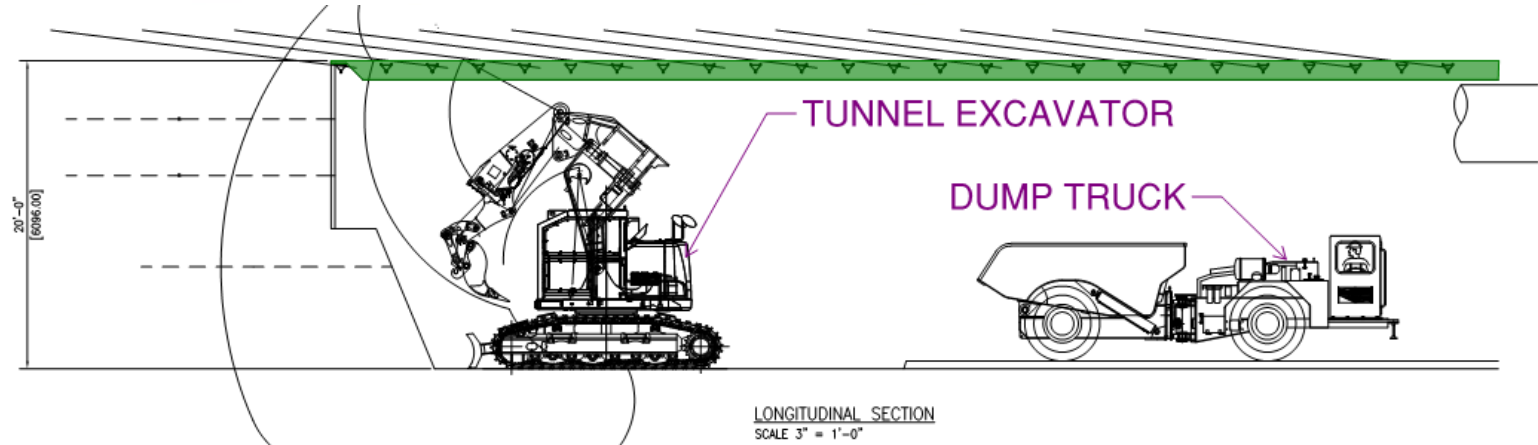


KENWOOD HOUSE TEMPORARY PARKING



TUNNELING EXCAVATION PROGRESS 30% COMPLETE





**TUNNEL
ENTRANCE AT
ARLISS ST.**



**TUNNEL
ENTRANCE AT
ARLISS ST.**





**HYDRAULIC
ROCK
EXCAVATING
EQUIPMENT**

TUNNELING OPERATION





**WORK AT
PLYMOUTH ST.**

**FUTURE SITE OF
MANCHESTER
PLACE STATION**

6 MONTH LOOK AHEAD

Arliss St. / Flower Ave.

- 24-hour tunnel excavation continues through Spring 2019
 - Blasting will occur when necessary
- Tunnel interior work
- Track and system work

East Wayne Ave. / Plymouth St.

- Soldier pile installation continues through mid-October
- The western portal of the tunnel/Manchester Place station excavation will require trucks to queue in a closed lane on Wayne Ave. to transport material off site through approved routes
- Concrete will be poured to form the foundation of the Manchester Place Station

PREVENTIVE MEASURES

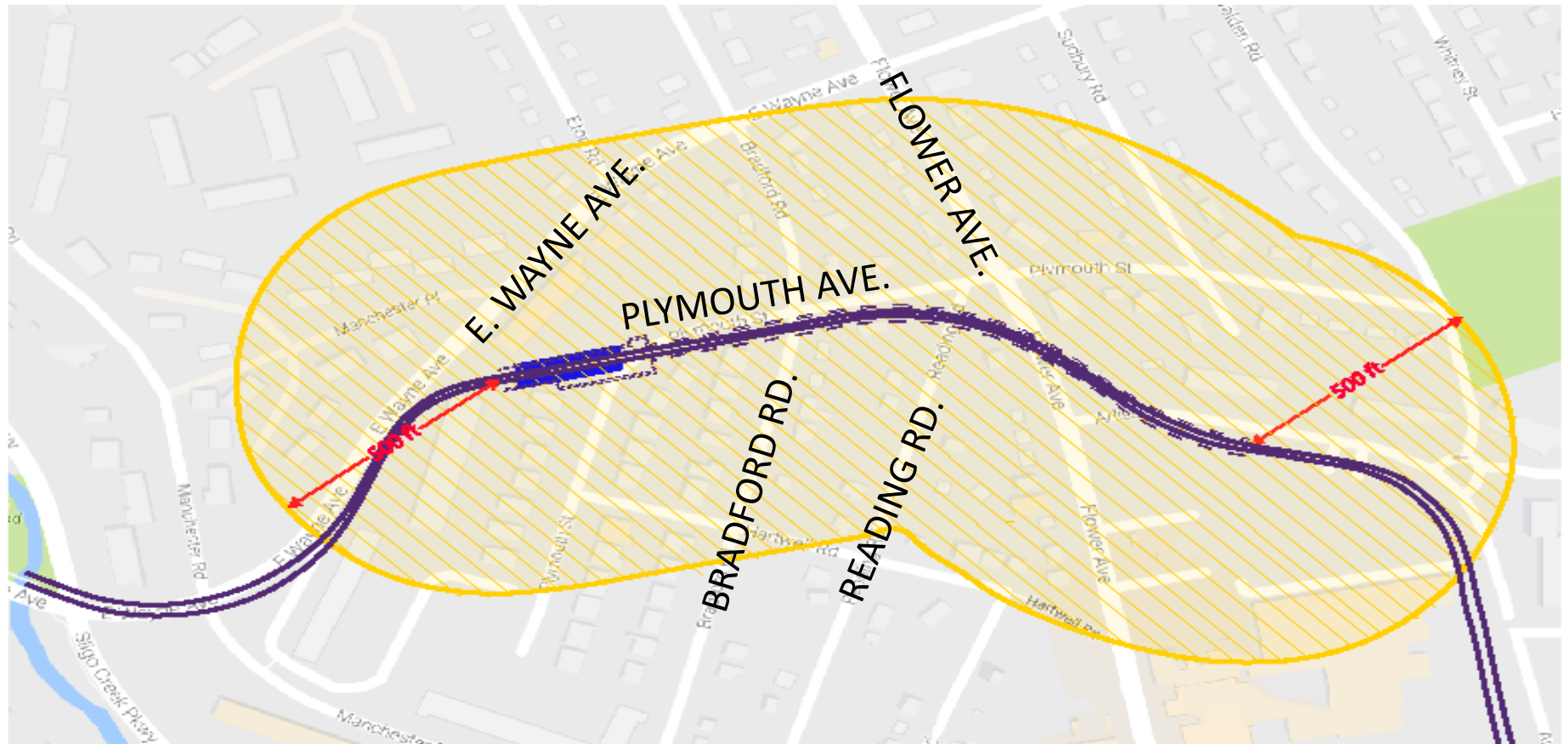
Preventive measures are in place to mitigate the risks and ensure safety for the public and staff supporting the project as well as the integrity of third party property during construction.

- Measures include:
 - Pre-construction surveys
 - Soil investigation borings and testing
 - Pre-construction safety measures
 - Temporary sound wall for residents on Arliss St.






PREVENTIVE MEASURES *(CONTINUED)*

Pre-construction Surveys

- PLTC conducts pre-construction surveys to assess and record the current condition of structures within close proximity to the construction of the Purple Line project. The surveys record the condition of the structures prior to any construction activities beginning.
- The engineers performing the survey will sketch and photograph the interior and exterior of properties to record the existing condition. The individuals performing this work are structural and geotechnical engineers from the PLTC team.
- Post construction surveys will also be performed on structures, including homes, at the completion of construction in order to compare the information recorded during the pre-construction survey. Additional letters will be sent at that time to schedule those surveys



LEGEND

- | | | |
|--|---|--|
|  PURPLE LINE TRACK ALIGNMENT |  PROPOSED TUNNEL |  PRE-CONSTRUCTION SURVEY AREA |
|  PROPOSED STATION |  PROPOSED CUT & COVER TUNNEL | |

PREVENTIVE MEASURES *(CONTINUED)*

Instrumentation and Monitoring

- Detection of potential ground movements, change in groundwater table levels, and displacement of existing structures
- Data collected electronically and transmitted to a data base accessible to Purple Line engineers and geologists
- Threshold Values programmed into the system alerting Purple Line personnel in real-time via email and text messages

Use of Qualified and Experienced Personnel

- Specific Tunnel Construction Training and Safety Orientation
- Supervision with at least 20 years experience in Tunnel Construction
- Licensed Professional Engineers on site monitoring ground conditions and movements on a daily basis

BLASTING FAQs

What is blasting?

- Blasting is the controlled use of explosives or gas pressure blasting pyrotechnics, to break rock for excavation. PLTC will only use controlled blasting when the rock conditions require.

Are blasters required to have a permit from the Fire Marshal?

- Yes, a permit to transport, use, and purchase explosives is required before any blasting is performed.
- Explosives are not kept on site, and transported the day blasting is scheduled

Do I have the right to be notified of a blasting operation in my neighborhood?

- PLTC will notify residents that have signed up to receive electronic construction notifications 24 hours before blasting occurs
- Sign up to receive notifications at Purplelinemd.com

Why do I feel the blasting?

- Most of the energy from a blast is used to break rock, but some energy will travel from the blast site in the form of ground and air waves. Depending on your proximity to the blast, it could vibrate or shake.

MAINTENANCE OF TRAFFIC – WHAT TO EXPECT

- Existing traffic patterns will change as work occurs, as needed
- Work may occur on both sides of the road and across roadways
- When a lane closure is required, a notice will be distributed
- Orange cones and barrels (temporary barricades) will be in place
- Flag-person, when required, will direct traffic
- Underground utility work may require temporary road plates



PEDESTRIAN SAFETY

- Work zones will be clearly marked and the public should not enter them
- Pedestrian detours will be clearly signed
- When closures occur, alternate access will be provided
- Pedestrian crossings will be maintained
- ***Pedestrians are urged to obey construction signage and keep out of work zones***



CONSTRUCTION WORK HOURS

- At the tunnel, operations will be 24/7 within the tunnel for excavation
- Blasting in the tunnel authorized from 5 a.m. to 9 p.m. by the State Fire Marshal
 - PLTC will work to keep blasting within daytime hours when possible
- Typical traffic lane closures can occur between 9 a.m. – 3 p.m.

COMMUNITY & BUSINESS OUTREACH



- At the request of residents, one-on-one meetings are regularly held to explain construction operations/concerns
- Based on feedback from the community, installation of pedestrian delineators were installed at the temporary access at the Arliss Giant Food Store
- PLTC has facilitated meetings with the Giant Food Store and local community members to further extend pedestrian access for safer entrance into the Giant's Food Store

COMMUNITY & BUSINESS OUTREACH (continued)

- Established a partnership with El Golfo Restaurant
- El Golfo has a Purple Line featured menu
- Sponsored the Discover Long Branch popup festivals over the summer with John Angel
- Sponsoring the 2018 Discover Long Branch 5K
 - November 4, 2018 8:00 a.m.
 - 8700 Piney Branch Rd. Silver Spring, MD 20901



STAY UP TO DATE ON PURPLE LINE PROGRESS

- Sign up for construction notices at **Purplelinemd.com**
- For construction related questions and concerns, contact PLTP:
 - Email at outreach@pltcllc.com
 - 24/7 hotline at **240-424-5325**
- For general project questions and comments, contact MTA public outreach:
 - Email at outreach@purplelinemd.com
 - Call **443-451-3706** or **443-451-3705 (Español)**