



Bethesda-Chevy Chase

CAT Meeting #1
October 17, 2017



Role of the Meeting Facilitator

- Neutral Party
- Run an orderly, professional and constructive CAT meeting
- Provide CAT opportunity to listen and receive information
- Provide CAT opportunity to ask questions



Welcome



Who Does What and Who Is In Charge?

- MTA retains ownership of the Purple Line
- PLTP and its construction branch, PLTC, are constructing the project for MTA
- PLTP and PLTC are carrying out construction in accordance with the P3 Agreement and the Technical provisions
- PLTC will provide Quality Control and Quality Assurance
- MTA is providing review and oversight, including Quality Assurance Oversight, over all PLTC's work
- MTA will monitor PLTC's work to ensure all Technical Provisions and requirements are being met



How is PLTP's work monitored?

- MTA's Construction Management team includes:
 - Resident Engineers
 - Inspectors
 - Safety Officer
 - Environmental Compliance Manager
- MTA monitors construction activities for compliance with the Agreement, permits and law/regulations
- The Agreement includes specific requirements regarding notifications and worksite conditions (noise, dust, dirt on the roads)
- The Agreement also includes financial incentives and disincentives based on their performance



Introductions of Key Staff and Stakeholders



CATs Overview



What is a CAT?





Role of the CATs

CATs are intended to:

- Promote two-way information sharing between the Purple Line team and the community
- Offer a forum for residents and other community stakeholders to engage in open-dialogue with the Purple Line team
- Serve as an organized, results-oriented vehicle for identifying and addressing area-specific issues and concerns related to Purple Line construction
- Provide accountability for follow-up actions agreed upon by the Purple Line team and the community



How Did We Get Here?

- CAT participant groups were identified within 1/3 mile of project alignment
- Chiefly composed of local resident and business groups, some at-large groups also represented
- Each participant group designated one primary representative and one alternate
- Terms “CAT representatives” and “CAT members” are used interchangeably



CATs Kickoff Meeting

- This first meeting includes both primary and alternate CAT representatives
- CATs binders were provided to help keep meeting notes and materials organized and handy for future meetings.
- Each subsequent meeting, **only one representative** from each community participant group is permitted to participate as a CAT member.



Meeting Structure

- Meeting agendas will be organized by the Purple Line team based on project schedule and community input
- Meetings will generally have four main components
 - Action Items from Previous Meeting
 - Project and Construction Updates from Purple Line Team
 - Updates and feedback from CAT representatives
 - Questions and comments from the public
- All presentation materials will be made available via www.purplelinemd.com
- It is anticipated that the CATs will meet approximately once per month, but schedules will vary by CAT



Role of the Meeting Facilitator

- Neutral Party
- Run an orderly, professional and constructive CAT meeting
- Provide CAT opportunity to listen and receive information
- Provide CAT opportunity to ask questions



Ground Rules for a Successful Meeting

- Everyone is treated courteously and with respect – no rude comments please
- Take turns, talk one at a time, and limit side conversations
- Everyone should feel welcome to participate
- Differing opinions are welcome
- Start on time; end on time
- Only one member is permitted to attend from each community group (the designated alternate may attend if the regular representative is unavailable)
- General public may attend the CAT meetings and can offer questions or comments during the last 15 minutes of every meeting.
- Weather-related cancellations will be based on the respective county school schedule or at the discretion of the MTA.



Bethesda/Chevy Chase Section Limits

Sta. 100+00 Bethesda to Sta. 230+00 Rock Creek

Presented by:
Jim Jewell – PLTC Area 1 Manager

OUTLINE

Project overview - access and mobility
Construction update
6-Month look ahead
Project schedule

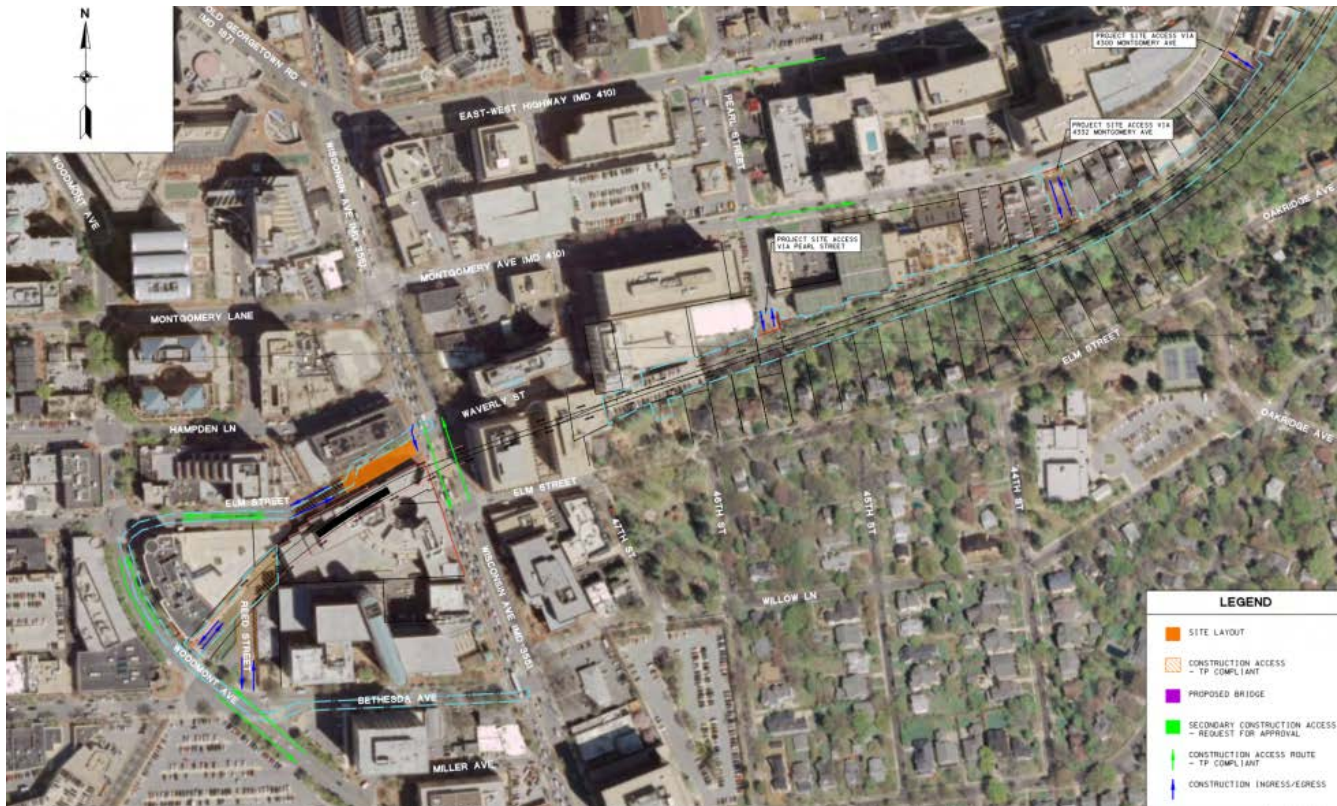


Work is constrained by access through the Apex Building and wetland permitting.

Work does not directly impact traffic except for Bethesda Shaft

Work at Elm Street Park needs to be coordinated with County

CCT work has limited access and needs to be coordinated with County



Work Scope includes:

- Bethesda Station
- Pedestrian Bridge
- Lynn Drive Underpass
- Retaining Walls
- Drainage/utilities
- TPSS



Work is constrained by access via Sleaford Road and Connecticut Ave.

Work does not directly impact traffic except for trucks pulling in and out and oversized load delivery

Work at Country Club needs to be coordinated with Country Club



Work Scope includes:
Sleaford Underpass
East and West Golf Cart
Underpass
Retaining Walls
Drainage/utilities



Work is constrained by access through the Connecticut Ave, Jones Mill and wetland permitting.

Work impacts traffic on Connecticut Ave for truck access and oversized load deliveries M-F 1 Lane NB 7am-3pm; SB 9am-3pm

Work impacts traffic on Connecticut Ave during CCT and LRT Bridge Construction

Work impacts traffic on Jones Mill for Phased Bridge Construction and Utility relocations M-F 9am-4pm or full closure



Work Scope includes:
Connecticut Avenue Station
Connecticut Ave LRT and
CCT bridges
Coquelin Run Underpass and
stream restoration
Jones Mill Bridge
Retaining Walls
Drainage/utilities



Work is constrained by access through the Jones Mill Road and Montgomery Country Facility. Access to bottom of Rock Creek from North side of East bridge approach

Work impacts traffic during the construction of the Jones Mill Underpass (1 lane during Phase 1, total shutdown in Phase 2).

Work through the Montgomery County yard will require coordination with Montgomery County

Work Scope includes:
Demolition of existing
pedestrian bridge over
Rock Creek
New Rock Creek LRT and
Pedestrian Bridges
Pedestrian Underpass
Retaining Walls
Drainage/utilities

PRE-CONSTRUCTION

Early Work

- Surveying
- Utility investigations
- Geotechnical investigations
- Environmental Reviews
- Design/engineering

COMMENCEMENT OF CONSTRUCTION

Ground Breaking - August 28, 2017

Start of Construction

- Site protection
- Tree removal
- Demolition
- Establishing construction offices



CONSTRUCTION OVERVIEW

Access and Mobility dictates the work flow

General Phasing:

- Forest Conservation Plan was approved, tree removal has begun where necessary
- NPDES permit was approved, utility relocations and upland clearing
- Establish access then build from bottom up
- Once “civil” footprint developed, specialty subcontractors can begin
 - Stations
 - Systems
 - Trackwork

CONSTRUCTION WORK HOURS

- Standard Calendar is 40 hours / week
- Make up / Maintenance day will be Saturday
- Normal Day Shift 7:00 AM – 5 PM (Flexible based on work zone)
- Normal Night Shift 8:00 PM – 4:30 AM (Will follow lane closure periods)

*Bethesda Station operates on a different schedule that varies based on the excavation and tunneling operations, and the redevelopment of Apex building.

CURRENT WORK AREAS

- Bethesda Station
 - Elm St. Closed
 - Excavation underway
- Future Capital Crescent Trail
 - Site Preparation
 - Tree Cutting/Grubbing



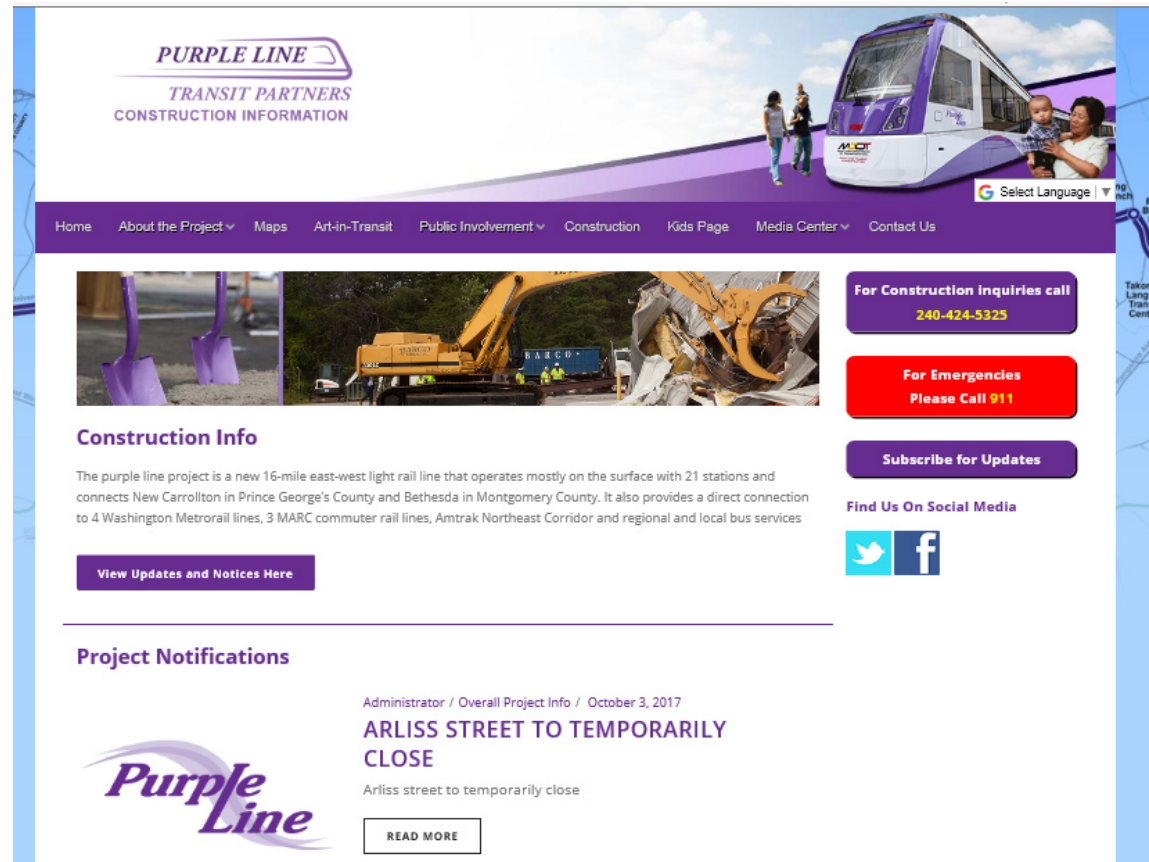
6-MONTH LOOK AHEAD – Bethesda to Rock Creek

- Utilities
 - Pearl St to Lynn Drive
 - Sleaford Road
 - Connecticut Avenue
 - Jones Mill Road
- Drainage
- Mass Excavation
- Jones Mill Underpass
- Walls

PROJECT SCHEDULE

- Bethesda Station - Summer 2017 – 2021
- Future Capital Crescent Trail - Fall 2017 – 2021
- Utility Relocation - Winter 2017 – Fall 2018
- Walls - Spring 2018 – Winter 2019
- Grading - Winter 2019 – Spring 2020
- Tracks - Summer 2020 – Winter 2020
- Train Communication - Winter 2020 – Summer 2021
- Testing/Commissioning – Summer 2021 – Winter 2021
- Purple Line Operations Begin – Spring 2022

New Construction information portal



PURPLE LINE
TRANSIT PARTNERS
CONSTRUCTION INFORMATION

Home About the Project Maps Art-in-Transit Public Involvement Construction Kids Page Media Center Contact Us

Select Language

For Construction Inquiries call
240-424-5325

For Emergencies
Please Call 911

Subscribe for Updates

Find Us On Social Media

Construction Info

The purple line project is a new 16-mile east-west light rail line that operates mostly on the surface with 21 stations and connects New Carrollton in Prince George's County and Bethesda in Montgomery County. It also provides a direct connection to 4 Washington Metrorail lines, 3 MARC commuter rail lines, Amtrak Northeast Corridor and regional and local bus services

[View Updates and Notices Here](#)

Project Notifications

Administrator / Overall Project Info / October 3, 2017

ARLISS STREET TO TEMPORARILY CLOSE

Arliss street to temporarily close

[READ MORE](#)

Purple Line

New Construction
information portal

Sign up for updates

PURPLE LINE
TRANSIT PARTNERS
CONSTRUCTION INFORMATION

Home About the Project Maps Art-in-Transit Public Involvement Construction Kids Page Media Center Contact Us

Select Language

For Construction Inquiries call
240-424-5325

For Emergencies
Please Call 911

Subscribe for Updates

Find Us On Social Media
Twitter Facebook

Construction Info

The purple line project is a new 16-mile east-west light rail line that operates mostly on the surface with 21 stations and connects New Carrollton in Prince George's County and Bethesda in Montgomery County. It also provides a direct connection to 4 Washington Metrorail lines, 3 MARC commuter rail lines, Amtrak Northeast Corridor and regional and local bus services

[View Updates and Notices Here](#)

Project Notifications

Administrator / Overall Project Info / October 3, 2017
ARLISS STREET TO TEMPORARILY CLOSE
Arliss street to temporarily close
[READ MORE](#)

New Construction information portal

Sign up for updates

**Remember to select the
area where you live or work
for specific information
sent to your email.**

The screenshot shows the 'PURPLE LINE TRANSIT PARTNERS CONSTRUCTION INFORMATION' website. The header includes a navigation menu with links: Home, About the Project, Maps, Art-in-Transit, Public Involvement, Construction, Kids Page, Media Center, and Contact Us. A banner image shows a purple and white train with people. Below the header, a message states: 'The update subscription form is loaded by javascript. If you are having trouble viewing the form, please be sure javascript is enabled and is not being blocked by third-party software.'

The main form area contains the following fields and sections:

- First Name ***: Text input field with placeholder 'Enter first name.'
- Last Name ***: Text input field with placeholder 'Enter last name.'
- Address ***: Text input field with placeholder 'Enter address here.'
- Town ***: Text input field with placeholder 'Enter town here.'
- County ***: Text input field with placeholder 'Enter county here.'
- Phone Number ***: Text input field with placeholder 'Enter phone number.'
- Email ***: Text input field with placeholder 'Enter your email.'
- How would you prefer to receive updates? If you select text please be sure to enter your mobile phone number. ***: A dropdown menu with 'Email' selected.
- Neighborhood Selections**: A list of neighborhoods with checkboxes:
 - ☐ Bethesda/Chevy Chase: Bethesda to Rock Creek Park
 - ☐ Greater Lyttonsville/Woodside: Rock Creek Park to Woodside Station
 - ☐ Silver Spring: Spring Street to Wayne Avenue to Manchester Place Station
 - ☐ Long Branch: Manchester Towers to Carroll Avenue
 - ☐ University Boulevard: Carroll Avenue to Adelphi Road
 - ☐ College Park/M Square: Adelphi Road to River Road/Kenilworth Avenue
 - ☐ Riverdale Park: Kenilworth Avenue/Riverdale Road, to Beacon Heights Station
 - ☐ Glenridge/New Carrollton: Veterans Parkway, Elin Road to New Carrollton
- Subscribe**: A purple button at the bottom of the form.

At the bottom right, it says 'powered by theMunch'.

New Construction
information portal

Sign up for updates
General notifications

PURPLE LINE
TRANSIT PARTNERS
CONSTRUCTION INFORMATION

Home About the Project Maps Art-in-Transit Public Involvement Construction Kids Page Media Center Contact Us

Select Language

For Construction Inquiries call
240-424-5325

For Emergencies
Please Call 911

Subscribe for Updates

Find Us On Social Media
Twitter Facebook

Construction Info

The purple line project is a new 16-mile east-west light rail line that operates mostly on the surface with 21 stations and connects New Carrollton in Prince George's County and Bethesda in Montgomery County. It also provides a direct connection to Washington Metrorail lines, 3 MARC commuter rail lines, Amtrak Northeast Corridor and regional and local bus services

View Updates and Notices Here

Project Notifications

Administrator / Overall Project Info / October 3, 2017
ARLISS STREET TO TEMPORARILY CLOSE
Arliiss street to temporarily close
READ MORE

New Construction
information portal

Sign up for updates
General notifications

Issue Date: 10/02/2017



**CONSTRUCTION NOTICE:
LONG TERM CLOSURE**



Arliss Street to Temporarily Close

Upcoming Activity

What: Temporary long term closure of road and driveway/entrance to Giant Food

When: On or about November 2, 2017 through 2020

Where: Arliss Street between Flower Avenue and Walden Road, and access to Giant Food from Arliss Street

Please note this work will not affect the other entrance to the Giant Food.

Arliss Knowles Townhouses will continue to have access via Arliss Street.

▲ Closed

▲ Existing Driveway

▲ Future Temporary Driveway

Explanation of Work

The closure is necessary to construct the Purple Line.

Immediate work includes:

- Installation of Fencing
- Installation of project construction trailers/work site
- Initial clearing and grubbing
- Tree removal
- Utility Relocations



For information on construction activities and schedule, contact PLTP at 240-424-5325 or visit www.purplelinemd.com.

New Construction
information portal

Sign up for updates
General notifications
View updates

PURPLE LINE
TRANSIT PARTNERS
CONSTRUCTION INFORMATION

Home About the Project Maps Art-in-Transit Public Involvement Construction Kids Page Media Center Contact Us

Select Language

For Construction Inquiries call
240-424-5325

For Emergencies
Please Call 911

Subscribe for Updates

Find Us On Social Media
Twitter Facebook

Construction Info

The purple line project is a new 16-mile east-west light rail line that operates mostly on the surface with 21 stations and connects New Carrollton in Prince George's County and Bethesda in Montgomery County. It also provides a direct connection to 4 Washington Metrorail lines, 3 MARC commuter rail lines, Amtrak Northeast Corridor and regional and local bus services

View Updates and Notices Here

Project Notifications

Administrator / Overall Project Info / October 3, 2017
ARLISS STREET TO TEMPORARILY CLOSE
Arliss street to temporarily close
READ MORE

New Construction
information portal


Sign up for updates
General notifications
View updates

PURPLE LINE
TRANSIT PARTNERS

Purple Line

Home About the Project Maps Art-in-Transit Public Involvement Construction Kids Page Media Center Contact Us

Updates and Notices - Select an area below



Legend

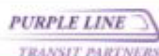
- Light Blue: Light Blue
- Dark Blue: Dark Blue
- Green: Green
- Yellow: Yellow
- Orange: Orange
- Red: Red
- Black: Black


BETHESDA CHEVY CHASE LYTTONSVILLE WOODSIDE SILVER SPRING LONG BRANCH UNIVERSITY BOULEVARD COLLEGE PARK M SQUARE RIVERDALE PARK GLENRIDGE NEW

Zone	Construction Dates	Location	Description
GLENRIDGE / NEW CARROLLTON	Starting Week of October 9, 2017	Veterans Parkway	Site prep work to begin along Veterans Parkway between Riverdale Rd. and Annapolis Rd. This work may cause periodic lane closures of the right hand southbound lane.
LONG BRANCH	Start: 11/1/17 End: 2020	Access to Giant Supermarket from Arliss Street (#8750)	Closure of the northern access point to the Giant Supermarket parking lot.
LONG BRANCH	Start: 11/1/17 End: 2020	Plymouth Street	Partial Closure of Plymouth Street between Bradford Rd. and Harwell Rd.
LONG BRANCH	Start: 11/1/17	Arliss Street	Closure of Arliss Street between Flower Ave and Walden Road. Access to parking lot east entrance for

New Construction information portal


Sign up for updates
General notifications
View updates
Select area





[Home](#) | [About the Project](#) | [Maps](#) | [Art-in-Transit](#) | [Public Involvement](#) | [Construction](#) | [Kids Page](#) | [Media Center](#) | [Contact Us](#)

Updates and Notices – Select an area below



BETHESDA
CHEVY CHASE

LYTTONSVILLE
WOODSIDE

SILVER SPRING

LONG BRANCH

UNIVERSITY
BOULEVARD

COLLEGE PARK
M SQUARE

RIVERDALE PARK

GLENBRIDGE
NEW

Zone	Construction Dates	Location	Description
GLENBRIDGE / NEW CARROLLTON	Starting Week of October 9, 2017	Veterans Parkway	Site prep work to begin along Veterans Parkway between Riverdale Rd. and Annapolis Rd. This work may cause periodic lane closures of the right hand southbound lane.
LONG BRANCH	Start: 11/1/17 End: 2020	Access to Giant Supermarket from Arliss Street (#8750)	Closure of the northern access point to the Giant Supermarket parking lot.
LONG BRANCH	Start: 11/1/17 End: 2020	Plymouth Street	Partial Closure of Plymouth Street between Bradford Rd. and Hartwell Rd.
LONG BRANCH	Start: 11/1/17	Arliss Street	Closure of Arliss Street between Flower Ave and Walden Road. Access to parking lot and entrance for

New Construction information portal


Sign up for updates
General notifications
View updates
Select area
Specific information

PURPLE LINE
TRANSIT PARTNERS

Purple Line

Home About the Project Maps Art-in-Transit Public Involvement Construction Kids Page Media Center Contact Us

Updates and Notices - Select an area below



Legend

- Light Blue: Light Rail Alignment in Transit
- Dark Blue: Light Rail Alignment in Construction
- Red: Proposed Station Location
- Orange: Station Construction
- Yellow: Station Access
- Green: Station Access
- Blue: Station Access

BETHESDA / CHEVY CHASE LYTONSVILLE WOODSIDE SILVER SPRING LONG BRANCH UNIVERSITY BOULEVARD COLLEGE PARK M SQUARE RIVERDALE PARK GLENRIDGE NEW CARROLLTON

Zone	Construction Dates	Location	Description
BETHESDA / CHEVY CHASE	Oct 25th 2017	CCT	The CCT is currently closed to public access between Woodmont Ave. in Bethesda and Talbot Ave. in Silver Spring.

Purple Line Information
443-451-3706
443-451-3705 (Español)

Search Terms of Use MTA Notice of Compliance Title VI Site Map Login

E-mail messages

Notifications and project information will be periodically sent via email.



Purple Line **CONSTRUCTION UPDATE**

FOR IMMEDIATE RELEASE: OCTOBER 12, 2017

WORK BEGINS ON THE PURPLE LINE PROJECT

THANK YOU FOR YOUR INTEREST IN THE PURPLE LINE PROJECT. AFTER MANY MONTHS OF PLANNING AND DESIGN, THE PROJECT HAS BEGUN CONSTRUCTION. THIS WORK INCLUDES THE REMOVAL OF TREES AND UNDERBRUSH, ESTABLISHING FENCES AND ENVIRONMENTAL PROTECTION ALONG THE WORK ZONE. UTILITY INVESTIGATIONS WILL ALSO BE TAKING PLACE AT MANY LOCATIONS ALONG THE CORRIDOR.

WORK HAS BEGUN AT THE BETHESDA STATION LOCATED ON ELM STREET IN BETHESDA. THIS STATION WILL EVENTUALLY PROVIDE A CONNECTION TO WASHINGTON METROPOLITAN AREA TRANSIT AUTHORITY (WMATA). THIS OPERATION WILL CONTINUE FOR SEVERAL YEARS.

THE GEORGETOWN BRANCH INTERIM TRAIL IS CLOSED UNTIL THE NEW TRAIL OPENS IN 2022. THE CORRIDOR IS AN ACTIVE CONSTRUCTION ZONE, AND SECURITY OF THE SITE WILL BE ENFORCED. IT IS IMPORTANT THAT PEOPLE REFRAIN FROM ENTERING THE SITE FOR THEIR SAFETY.

ARLISS STREET IN SILVER SPRING BETWEEN FLOWER AND WALDON ROAD IS SCHEDULED TO BE TEMPORARILY CLOSED TO ALLOW THE CONSTRUCTION OF THE EAST SIDE OF THE PLYMOUTH TUNNEL. THIS SITE, ADJACENT TO THE GIANT FOOD STORE, WILL HAVE A FENCED CONSTRUCTION YARD. ACCESS TO THE ARLISS KNOWLES TOWNHOUSES WILL BE MAINTAINED.

PLYMOUTH STREET WILL ALSO BE TEMPORARILY CLOSED DURING THE CONSTRUCTION OF THE WEST SIDE OF THE TUNNEL AND MANCHESTER STATION.

ALL ACTIVITIES ARE SUBJECT TO CHANGE DUE TO TRAFFIC, WEATHER OR EMERGENCY SITUATIONS.

PURPLE LINE
TRANSIT PARTNERS

PURPLELINEMD.COM OUTREACH@PLTCLLC.COM HOTLINE: 240-424-5325

Public Outreach

- Sign up for construction notices @ Purplelinemd.com
- For construction related questions and concerns contact PLTP at outreach@pltdllc.com
- Or call the 24/7 Hotline—240-424-5325
- For general project questions and comments please contact MTA public outreach at outreach@purplelinemd.com
- Or call 443-451-3706 (Español) 443-451-3705



Questions and Comments



Closing Remarks