



Greater Lyttonsville/Woodside

CAT Meeting #3

December 4, 2018



Carla Julian

PLTC Sr. Manager Public
Affairs/Community Outreach

Jim Jewell

PLTC Area 1 Manager



MEETING OVERVIEW

- Construction Progress Overview
- 6-Month Look Ahead
- Lyttonsville Place Bridge
- Rosemary Hills Elementary School
- Talbot Ave. Bridge
- Construction Work Hours
- Maintenance of Traffic & Pedestrian Safety
- Questions & Answers

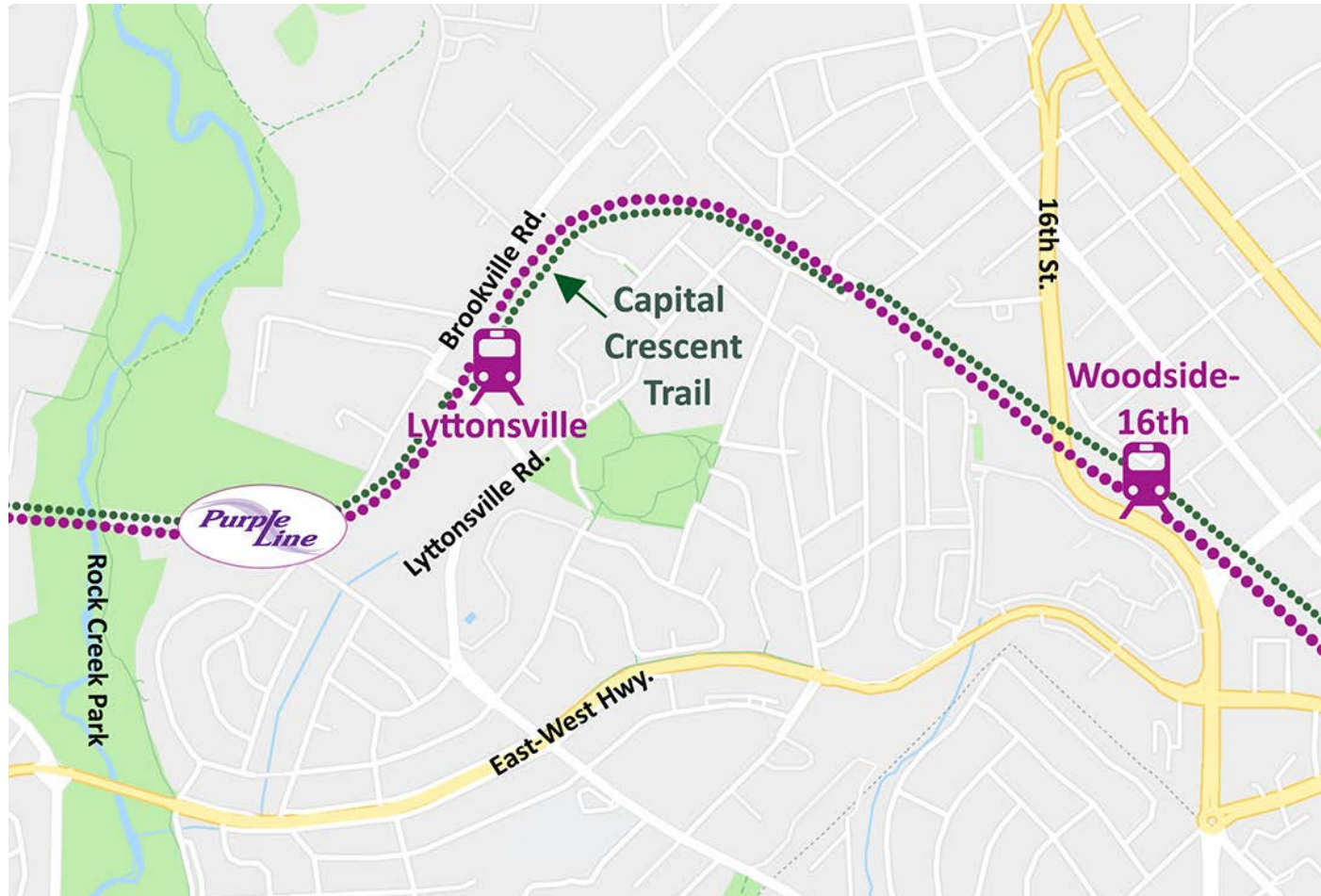


Lyttonsville Place Bridge



GREATER LYTTONSVILLE/WOODSIDE CAT SEGMENT

Rock Creek Park to Woodside Station





COMPLETED/ONGOING CONSTRUCTION WORK

- Segment Wide
 - Utility relocation work ongoing
 - Erosion and sediment controls ongoing
 - Stormwater management for construction ongoing
 - Tree clearing ongoing
- Rock Creek
 - Excavation ongoing
- Lyttonsville Place Bridge
 - Closure began June 18, 2018 and is scheduled to reopen December 18, 2018
 - Open for traffic and pedestrian use



COMPLETED/ONGOING CONSTRUCTION WORK (CONT.)

- Rosemary Hills Elementary School
 - Tree clearing completed on school property
 - Security/barrier fence to isolate the school from construction has been installed
- Woodside Station
 - Spring Street Plaza demolition completed
 - Two of the three foundations are demolished
- 8815 Leonard Drive has been demolished
 - Hauling debris continues on county-approved haul routes



LYTTONSVILLE PLACE BRIDGE PROGRESS PHOTOS

- Construction of the bridge abutments
 - These are constructed using Mechanical Stabilized Earthen (MSE) walls
 - Pipe pile with concrete cap supports the girders
- Concrete placement





LYTTONSVILLE PLACE BRIDGE PROGRESS PHOTOS

- Concrete girder erection
 - Girders are installed to create the bridge
- The green reinforcing bars are coated to protect the steel, which increases the service life of the structure
- The road surface will be constructed on top of the girders





LYTTONSVILLE PLACE BRIDGE PROGRESS PHOTOS

- A view of the girder installation
- The future Purple Line will travel underneath the Lyttonsville Place Bridge





SPRING STREET PROGRESS PHOTOS

- Demolition of Spring Street Shopping Center





6-MONTH LOOK AHEAD

- Segment Wide
 - Overhead utility work along Brookville Rd., Stewart Ave., Michigan Ave., and Talbot Ave. (winter/spring 2019)
 - Underground utility work along Brookville Rd., Stewart Ave., Michigan Ave., and Talbot Ave. (winter/spring 2019)
 - Retaining wall installation at Rock Creek for Capital Crescent Trail (CCT) and Purple Line bridge structure (winter/spring 2019)



*Schedule subject to change



6-MONTH LOOK AHEAD (CONT.)

- Rock Creek
 - Excavation work (winter 2018)
 - Demolishing existing pedestrian bridge (winter 2019)
 - Aerial bridge construction (begin winter 2018)
- Lyttonsville Place Bridge
 - Bridge re-opens to public (December 18, 2018)
 - General road work; storm drainage, paving, striping etc. (winter 2018)

*Schedule subject to change



6-MONTH LOOK AHEAD (CONT.)

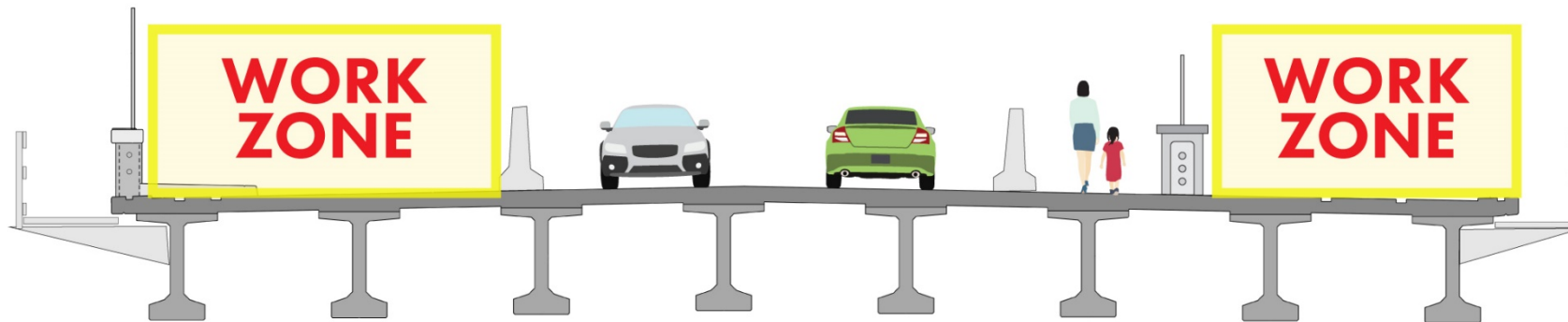
- Rosemary Hills Elementary School
 - Tree removal continues along/adjacent to CSX corridor once an agreement with CSX is finalized
 - Demolition of existing Talbot Ave. bridge (summer 2019)
 - Includes pile driving for the foundations
 - Construct soldier pile walls (winter 2018/spring 2019)
- Woodside Station
 - Continue foundation demolition
 - Mobilize site to become staging area
 - Staging area to remain in place during construction
 - Woodside will be one of the last stations to be constructed

*Schedule subject to change



LYTTONSVILLE PLACE BRIDGE

- New bridge is scheduled to re-open to traffic and pedestrians December 18, 2018
 - The bridge will have two lanes, one in each direction and one sidewalk
 - Work zones will be on either side of the bridge
- Work continues on/around the bridge:
 - Pedestrian sidewalks
 - General road work; striping, paving, etc.
 - Parapet installation (low protective wall along edge of the bridge)





ROSEMARY HILLS ELEMENTARY SCHOOL

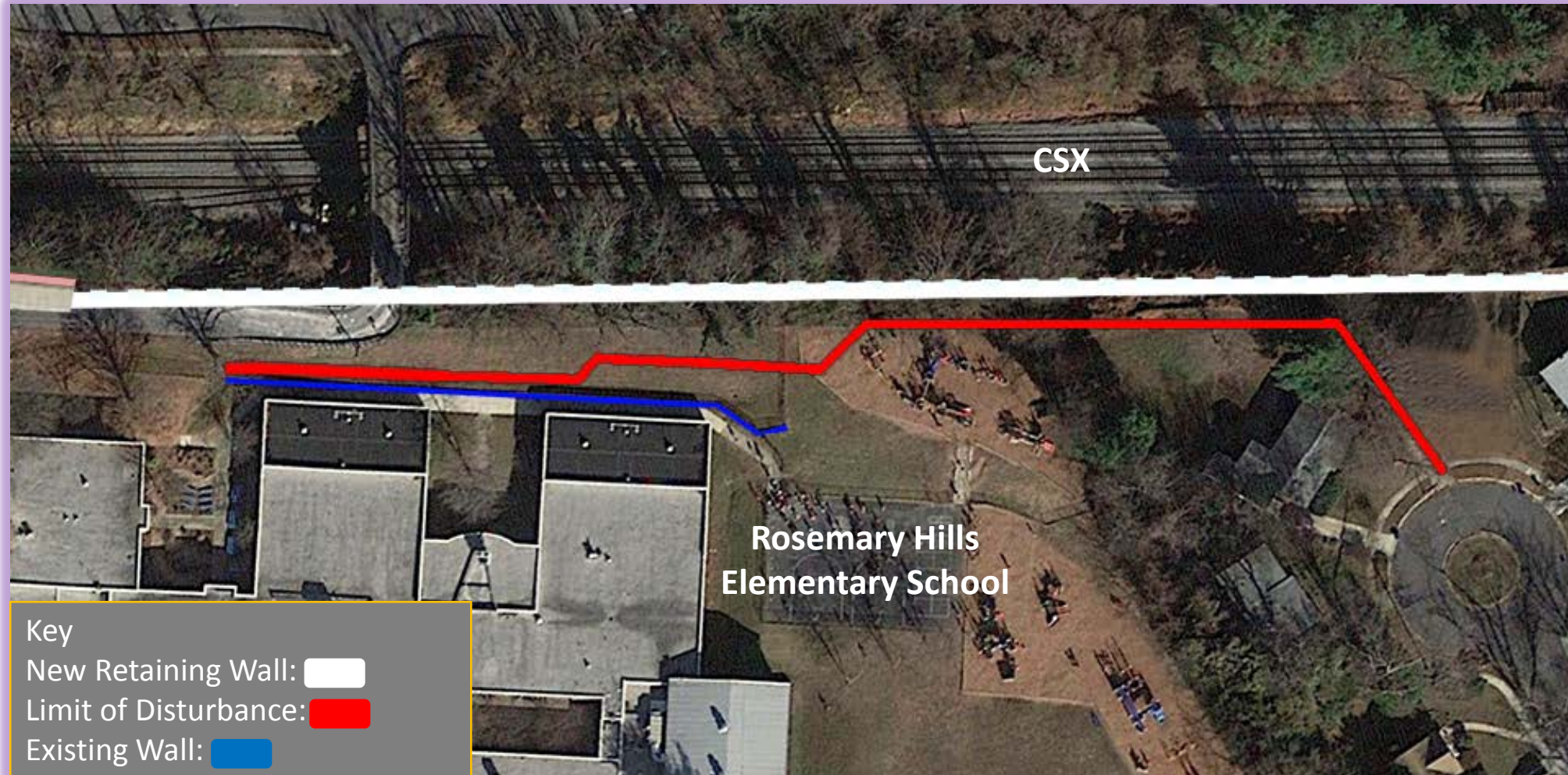
The project has coordinated with Montgomery County Public Schools and school administration in order to meet safety and security requirements pertaining to Purple Line work, as well as to diminish potential disruptions to the learning process. Construction of the new bridge must be coordinated with CSX and the right-of-way (ROW) must be provided by Montgomery County and CSX.

Current Schedule:

- Wall construction behind Rosemary Hills (summer 2019)
- Talbot Ave. bridge demolition (summer 2019)
- Talbot Ave. new bridge construction (summer 2019-2020)
- Utility relocations on Talbot Ave. and Michigan Ave. (winter/spring 2019)
- CSX must relocate a switch on their track and is unclear when this will occur

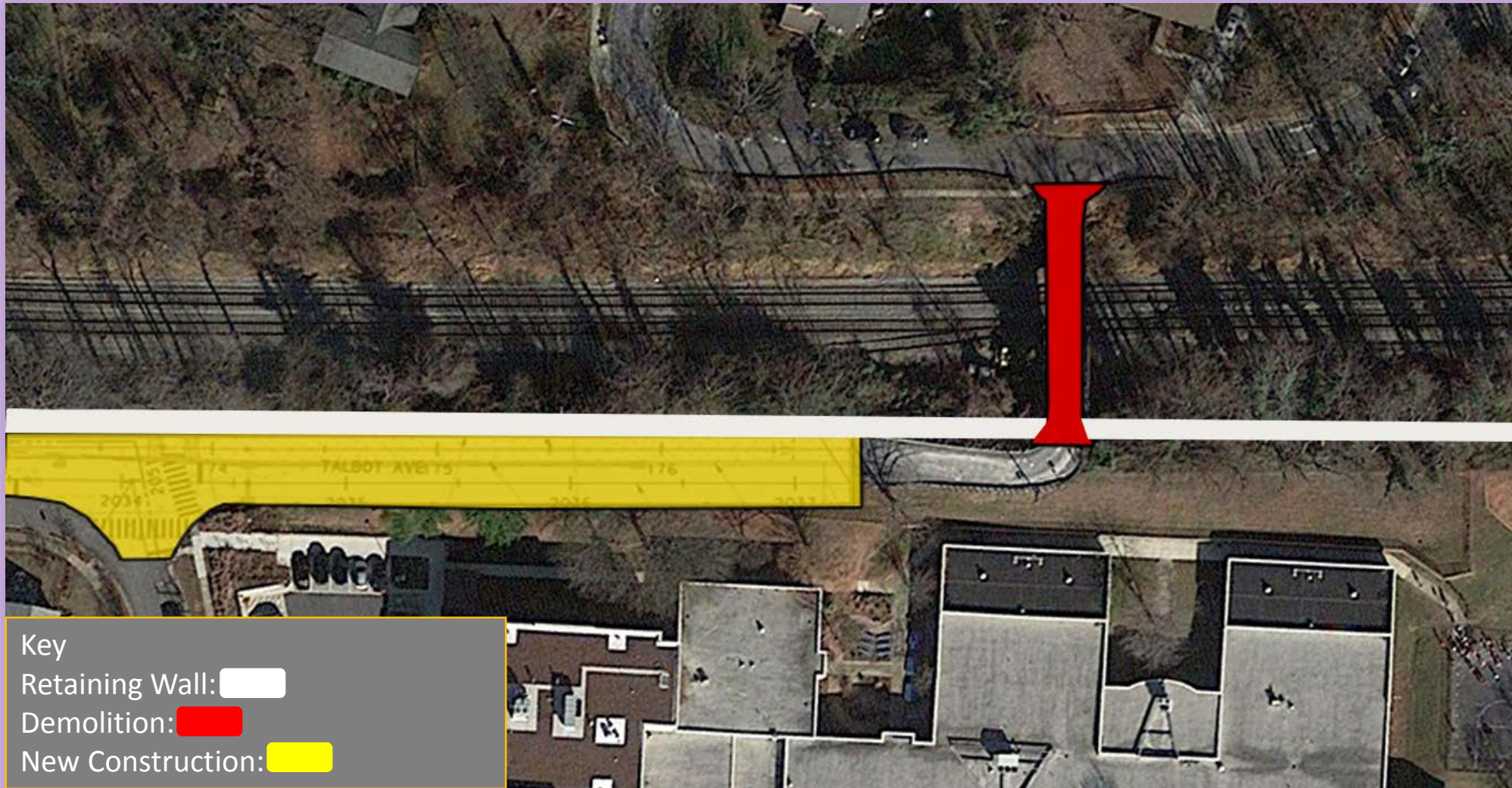


NEW WALL CONSTRUCTION – SUMMER 2019



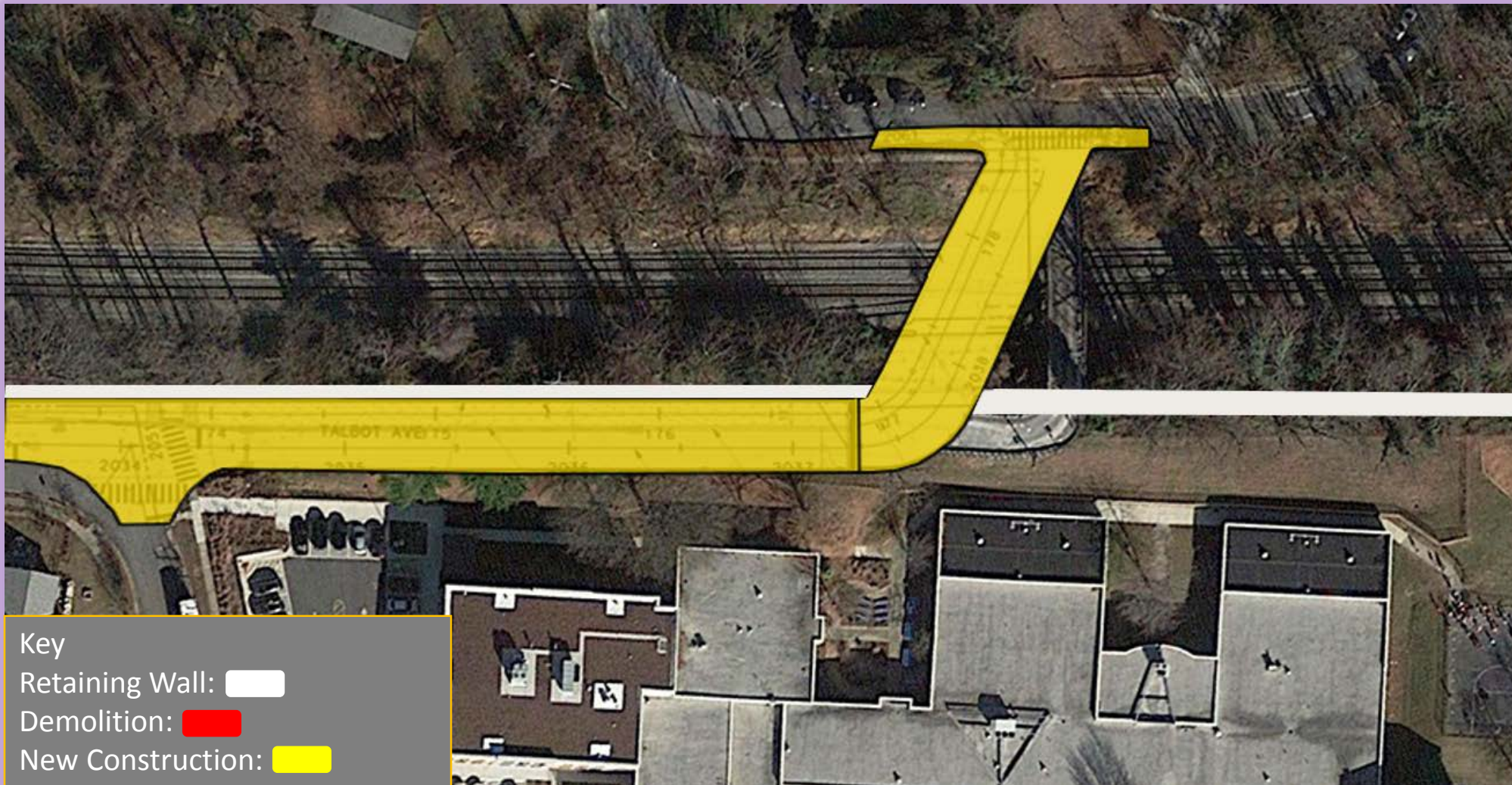


TALBOT AVE. BRIDGE DEMOLITION – SUMMER 2019



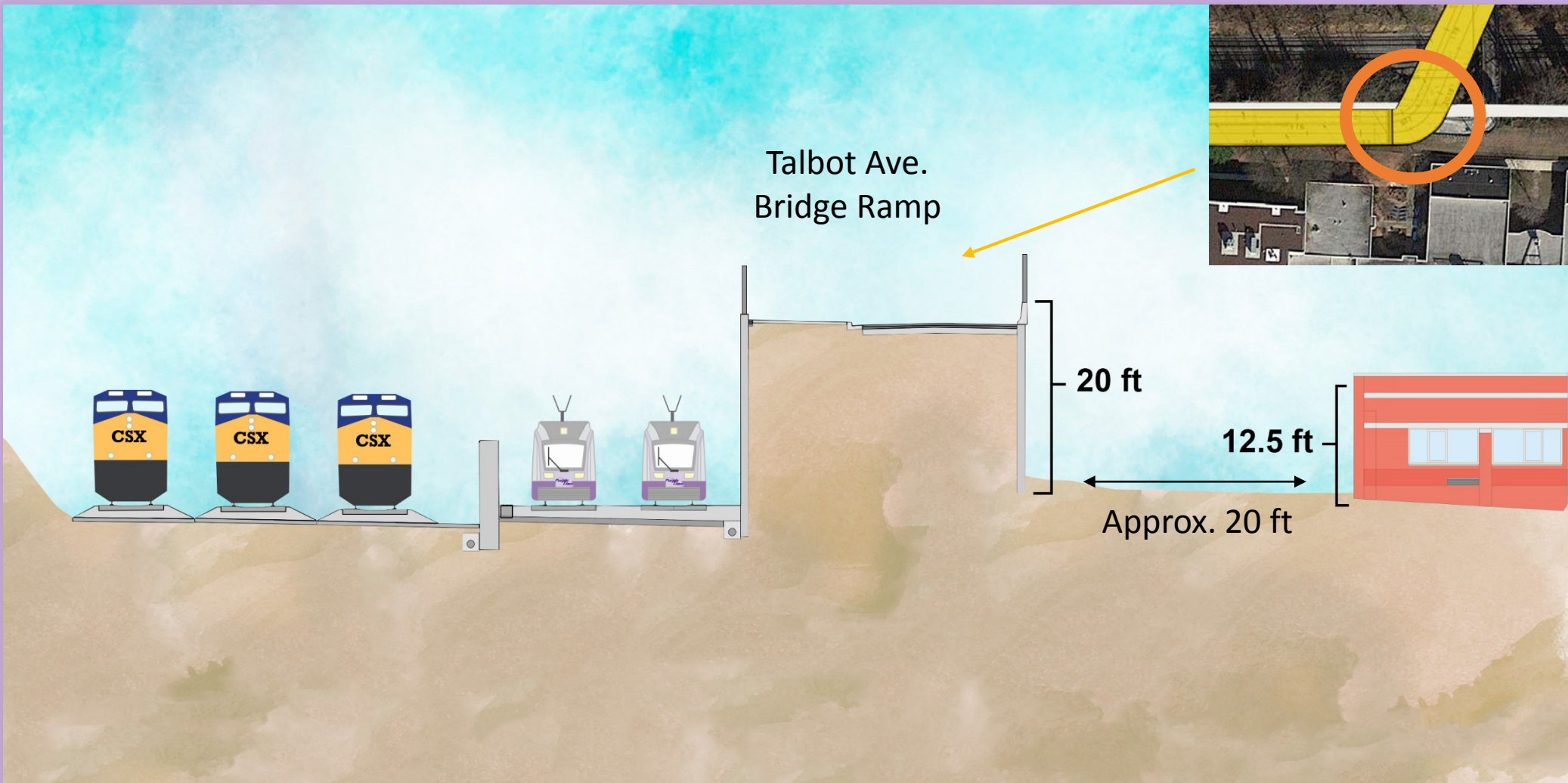


TALBOT AVE. NEW BRIDGE CONSTRUCTION SUMMER 2019 – 2020



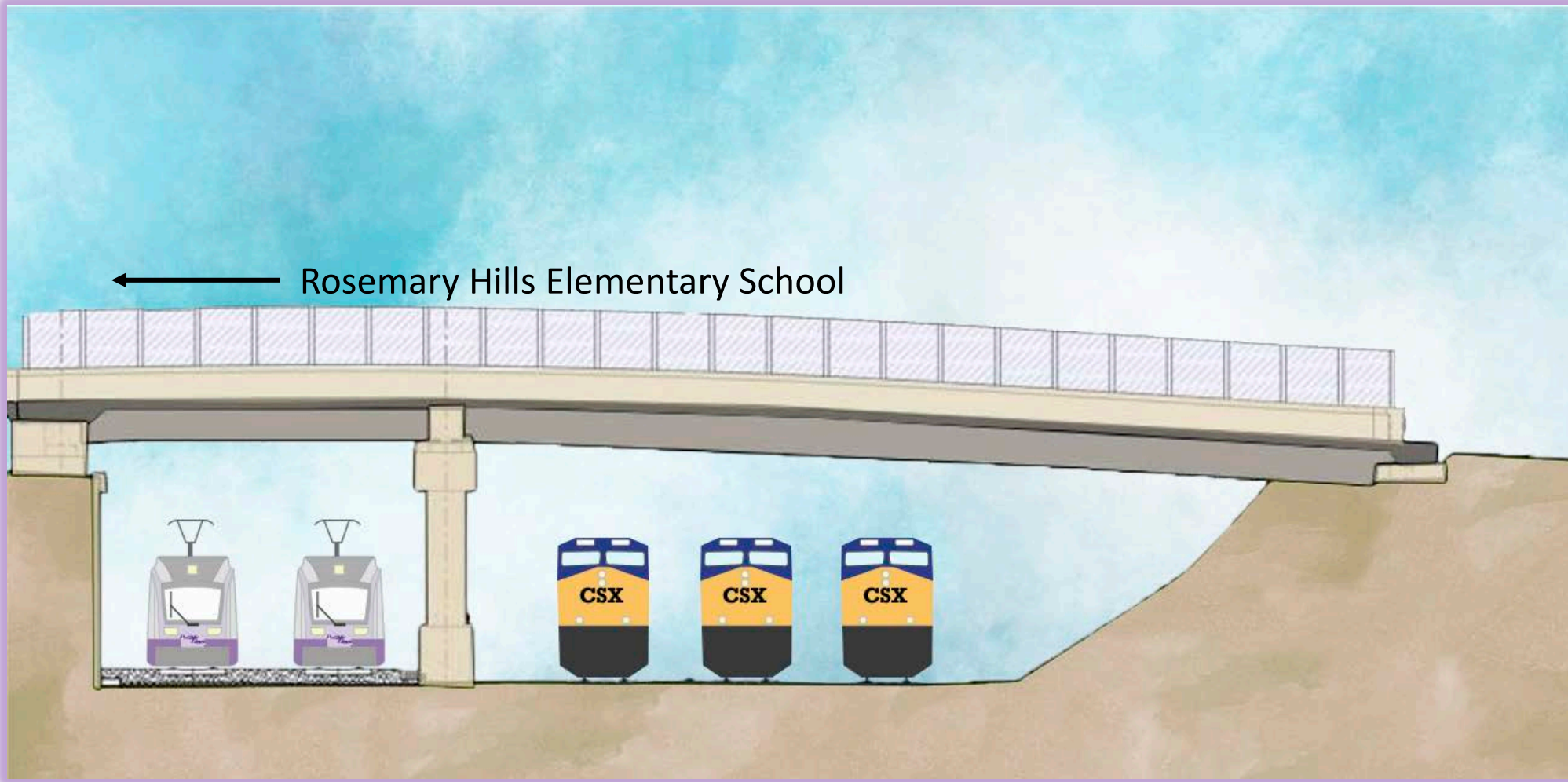


NEW TALBOT AVE. RAMP (LOOKING EASTWARD)





NEW TALBOT AVE. BRIDGE PROFILE (LOOKING WESTWARD)





NEW TALBOT AVE. BRIDGE: SAFER & MORE ACCESSIBLE

- New bridge significantly improves safety and access for Rosemary Hills Elementary School students and parents as well the community
- Existing bridge
 - Width of roadway is 18 feet
 - Provides only a single lane for both directions of traffic
 - No dedicated passage for pedestrians
 - Equipped with a low, irregularly-constructed wooden hand railing
- New bridge
 - Width ranges from 45 to 55 feet
 - Provides two traffic lanes, one in each direction
 - Offers broad sidewalk ranging from 13 to 22 feet wide, which is part of the CCT
 - Equipped with a high, clear safety barrier



MAINTENANCE OF TRAFFIC – WHAT TO EXPECT

- Existing traffic patterns will change as work occurs, as needed
- Work may occur on both sides of the road and across roadways
- When a lane closure is required, a notice will be distributed via text and email (sign-up required through purplelinemd.com)
- Orange cones and barrels (temporary barricades) will be in place
- Flag-person, when required, will direct traffic
- Underground utility work may require temporary road plates





PEDESTRIAN SAFETY

- Work zones will be clearly marked and the public should not enter them
- Pedestrian detours will be clearly signed
- When closures occur, alternate access will be provided
- Pedestrian crossings will be maintained
- ***Pedestrians should obey construction signage and keep out of work zones***





CONSTRUCTION WORK HOURS

- Standard work week is 40 hours
- Make-up / maintenance day will be Saturdays as required
- Typical day shift: 7 a.m. – 5 p.m.
- Typical night shift: 8 p.m. – 4:30 a.m.
- Typical traffic lane closure: 9 a.m. – 3 p.m.

Public will be notified through notifications on purplelinemd.com for:

- Night work
- Weekend work
- Major lane closures
- Utility shutdowns
- Road/driveway closures
- Blasting/pile driving

PURPLE LINE
TRANSIT PARTNERS
CONSTRUCTION INFORMATION

Home About the Project Public Involvement Construction Community Advisory Teams (CATs) Kids Page Contact Us

Select Language

For Construction Inquiries Call
240-424-5325

For Emergencies
Please Call 911

Subscribe For Updates
In English

Subscribe For Updates
In Spanish

Construction Info

The Purple Line project is a new 16-mile east-west light rail line that operates mostly on the surface with 21 stations and connects New Carrollton in Prince George's County and Bethesda in Montgomery County. It also provides a direct connection to four Washington Metrorail lines, three MARC commuter rail lines, Amtrak Northeast Corridor and regional and local bus services.



STAY UP TO DATE ON PURPLE LINE PROGRESS

- Sign up for construction notices at purplelinemd.com
- For construction-related questions and concerns, contact PLTP:
 - Email at: outreach@pltcllc.com
 - 24/7 hotline at **240-424-5325**
- For general project questions and comments, contact MTA public outreach:
 - Email at: outreach@purplelinemd.com
 - Call: **443-451-3706** or **443-451-3705 (Español)**