



# University Boulevard

CAT Meeting #2  
May 1, 2018



# Welcome



# Role of the Meeting Facilitator

- Neutral Party
- Run an orderly, professional and constructive CAT meeting
- Provide CAT opportunity to listen and receive information
- Provide CAT opportunity to ask questions



# Ground Rules for a Successful Meeting

- Everyone is treated courteously and with respect – no rude comments please
- Take turns, talk one at a time, and limit side conversations
- Everyone should feel welcome to participate
- Differing opinions are welcome
- Start on time; respect everyone's time
- General public may attend the CAT meetings and can offer questions or comments during the last 15 minutes of every meeting.



# Introductions of Key Staff and Stakeholders

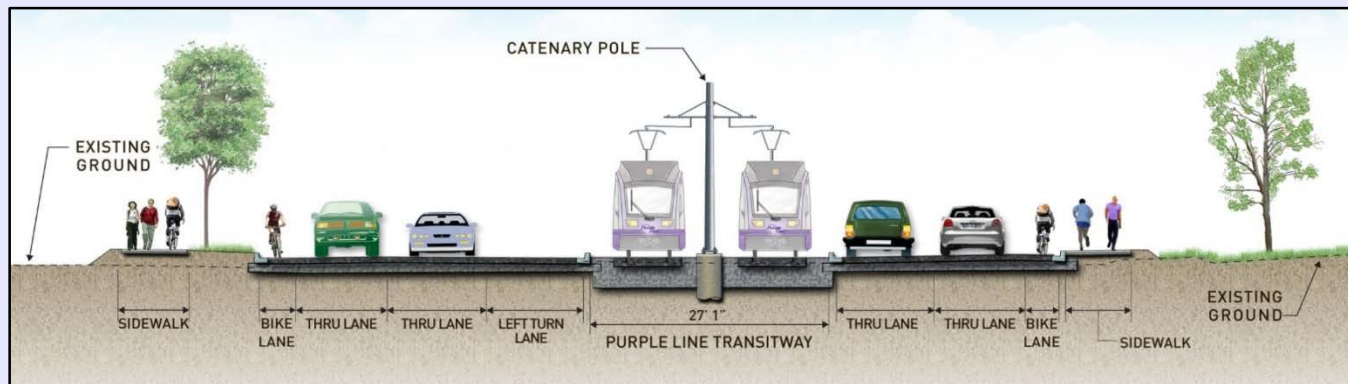
- A new light rail line that connects to Metrorail, MARC, and multiple bus services
- A 16 mile east-west light rail line between New Carrollton in Prince George's County and Bethesda in Montgomery County
- Operates mostly on the surface with 21 stations





# University Boulevard Typical Design

- Convert two existing roadway lanes to transit
- Maintain two lanes of traffic in each direction
- Improves pedestrian facilities/safety
- Provides for left turn lanes at major intersections
- Provides opportunities for wider sidewalks and green buffers in some areas
- Ballasted tracks expect at vehicle roadway crossing where track will be embedded into pavement





# Pedestrian Safety Measures

- New and continuous sidewalks along both sides of the roadway from Piney Branch to Campus Drive
- Grass buffer between the sidewalk and roadway where right-of-way permits
- Bike lanes in both directions, providing an additional buffer between the sidewalk and the travel lanes
- Reduced roadway width from six to four lanes to minimize the time required to cross the road
- Additional median fencing
- New signalized/protected crosswalks with pedestrian count-down signals at:
  - Seek Lane
  - Merrimac Drive
  - 14<sup>th</sup> Avenue
  - Guilford Road
  - 24<sup>th</sup> Avenue

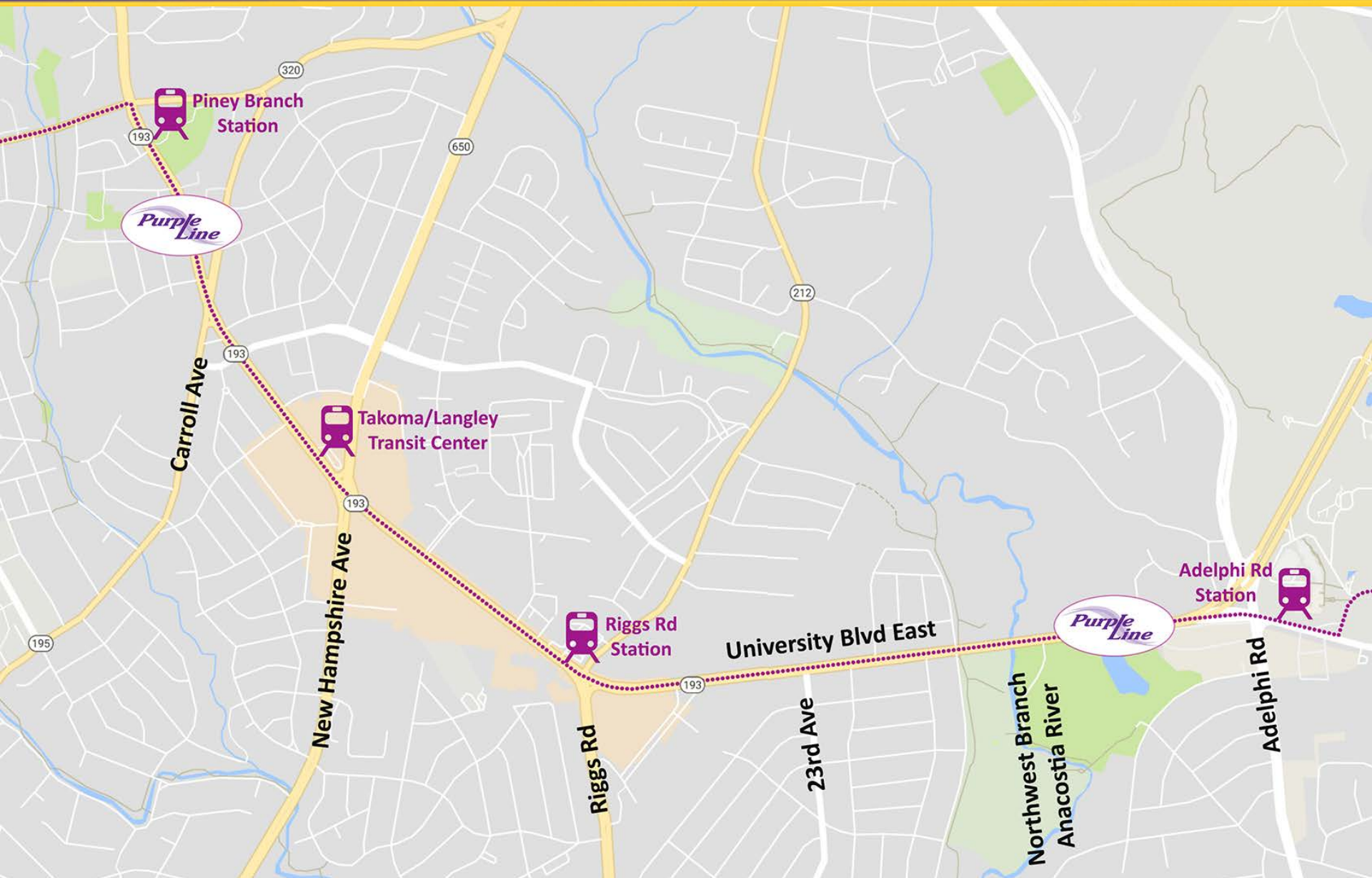
University Boulevard  
Carroll Avenue to Adelphi Road  
May 1, 2018

**Presented by:**  
**Sean Grant– PLTC Area 3 Field Engineer**

## Outline

- Project overview
- Construction update
- 6-month look ahead
  - Utility work
  - Staging of work along University Blvd. East
  - Pedestrian safety
- Bridge at Northwest Branch
- Business outreach
- Transit outreach
- Questions

**PURPLE LINE**  
TRANSIT PARTNERS



## Construction update

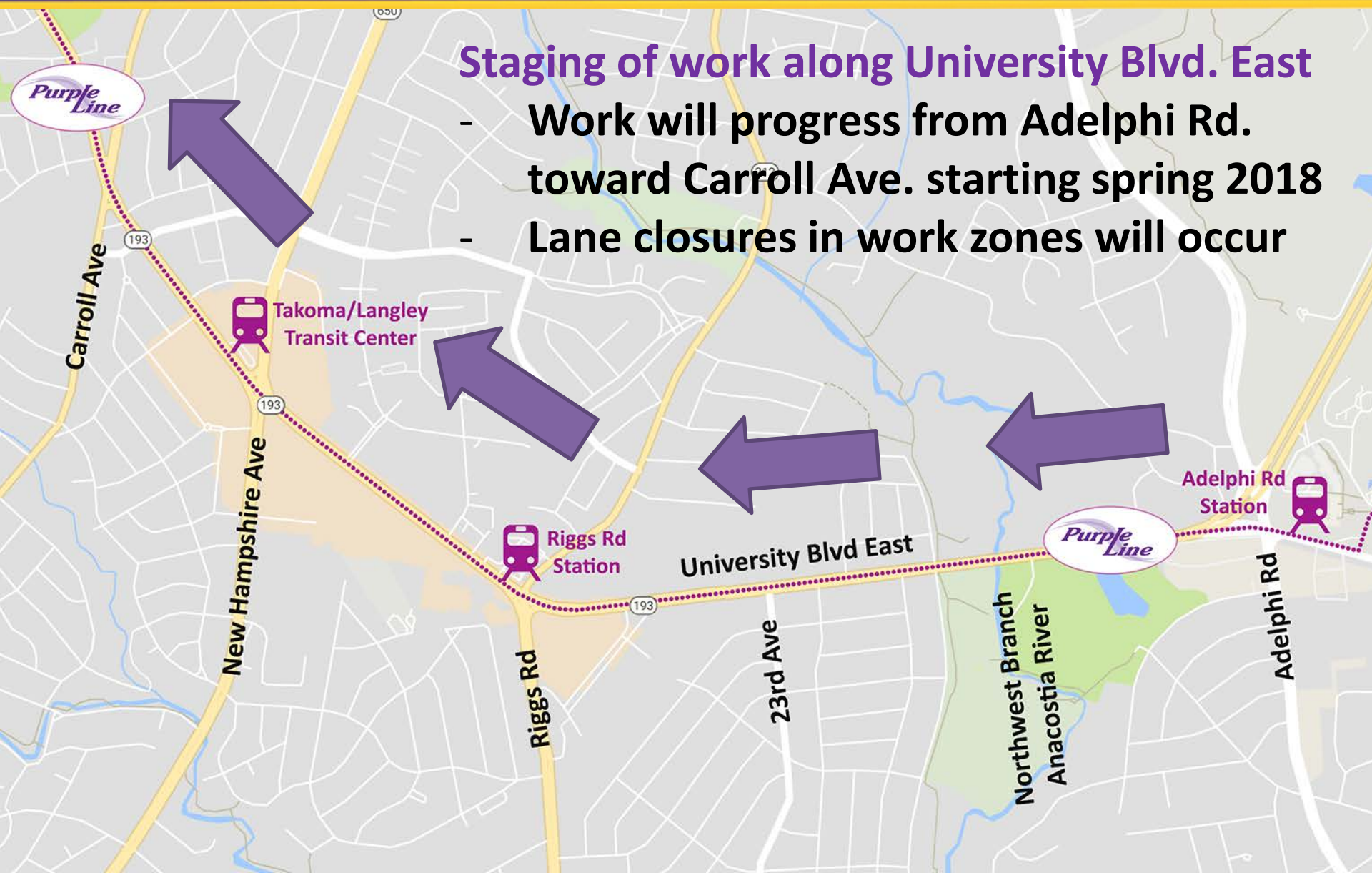
- Surveying
- Utility investigations
- Geotechnical investigations
- Environmental controls
- Design/engineering/constructability reviews
- Site preparations
- Demolition of Domino's Pizza building
- Securing permits

## Overall 6-month look ahead

- Tree clearing
- Overhead utility relocation (east to west)
  - Power
  - Communications
- Underground utility relocation
- Traffic signal reconstruction and timing adjustments
- Phased replacement of University Blvd. East bridge over Northwest Branch

## Staging of work along University Blvd. East

- Work will progress from Adelphi Rd. toward Carroll Ave. starting spring 2018
- Lane closures in work zones will occur



## Utility work

- Install new utility poles
- Move overhead lines after poles are installed
- Coordinate localized work zones with lane closures
- Underground utilities will follow overhead work
- Utility companies will notify of any service interruptions
- All efforts will be made to minimize disruptions



## Pedestrian safety

- Pedestrian detours will be clearly signed
- When closures occur, alternate access will be provided
- Pedestrian access will be maintained to businesses and residents
- Work zones will be marked
- Pedestrians are urged to obey construction signage and keep out of work zones



## University Blvd. East bridge over Northwest Branch



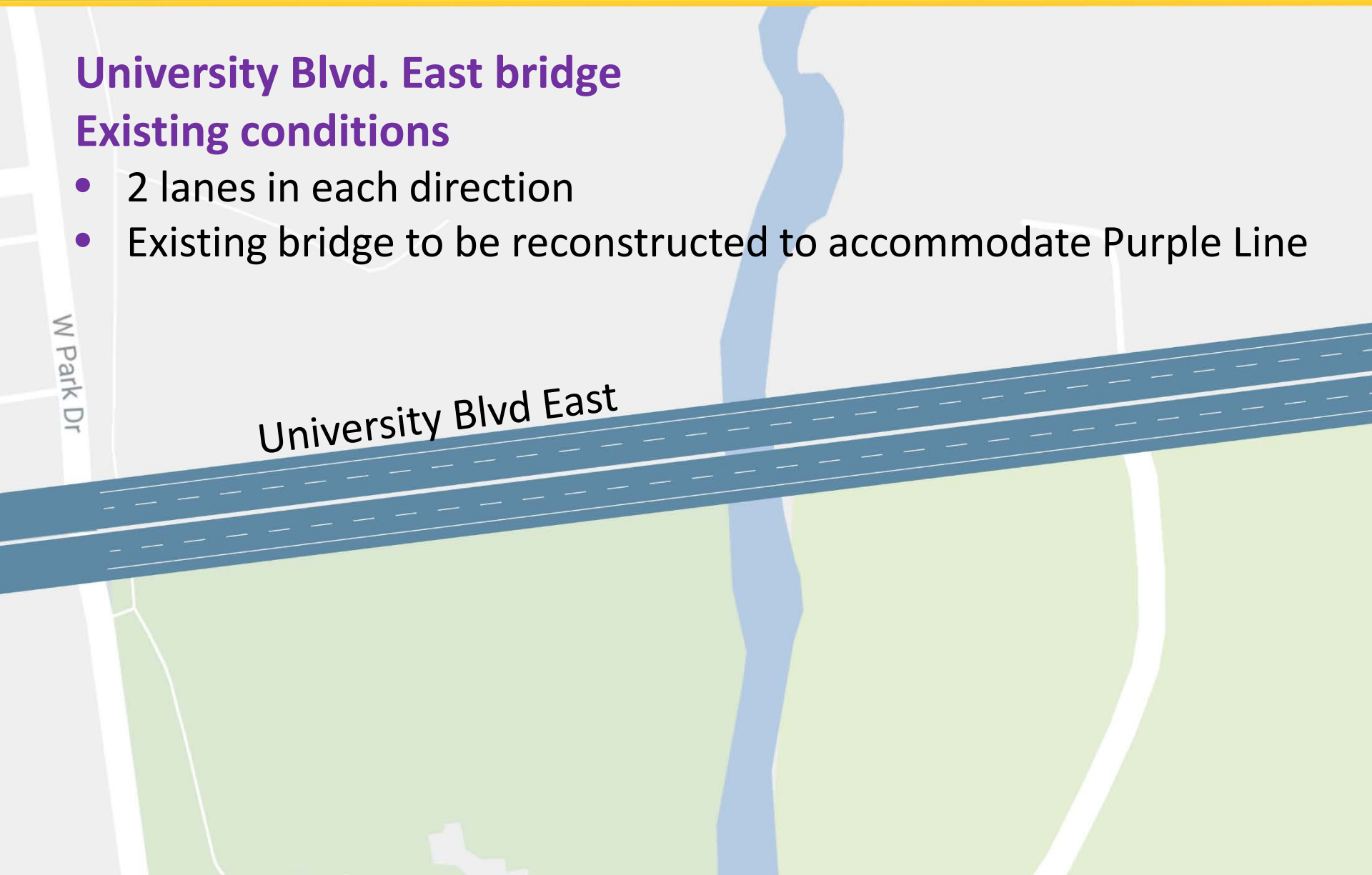
## University Blvd. East bridge



## University Blvd. East bridge

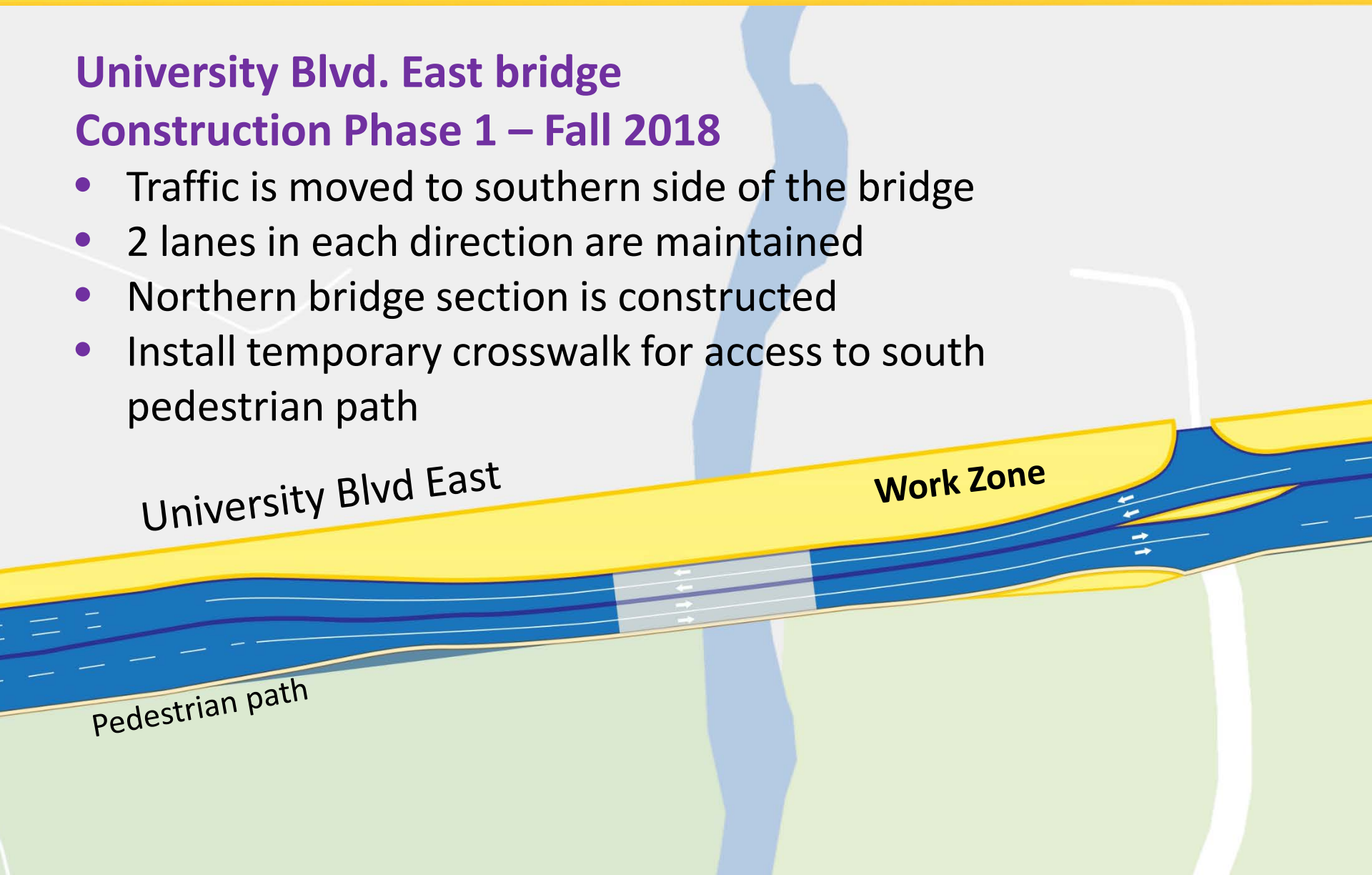
### Existing conditions

- 2 lanes in each direction
- Existing bridge to be reconstructed to accommodate Purple Line



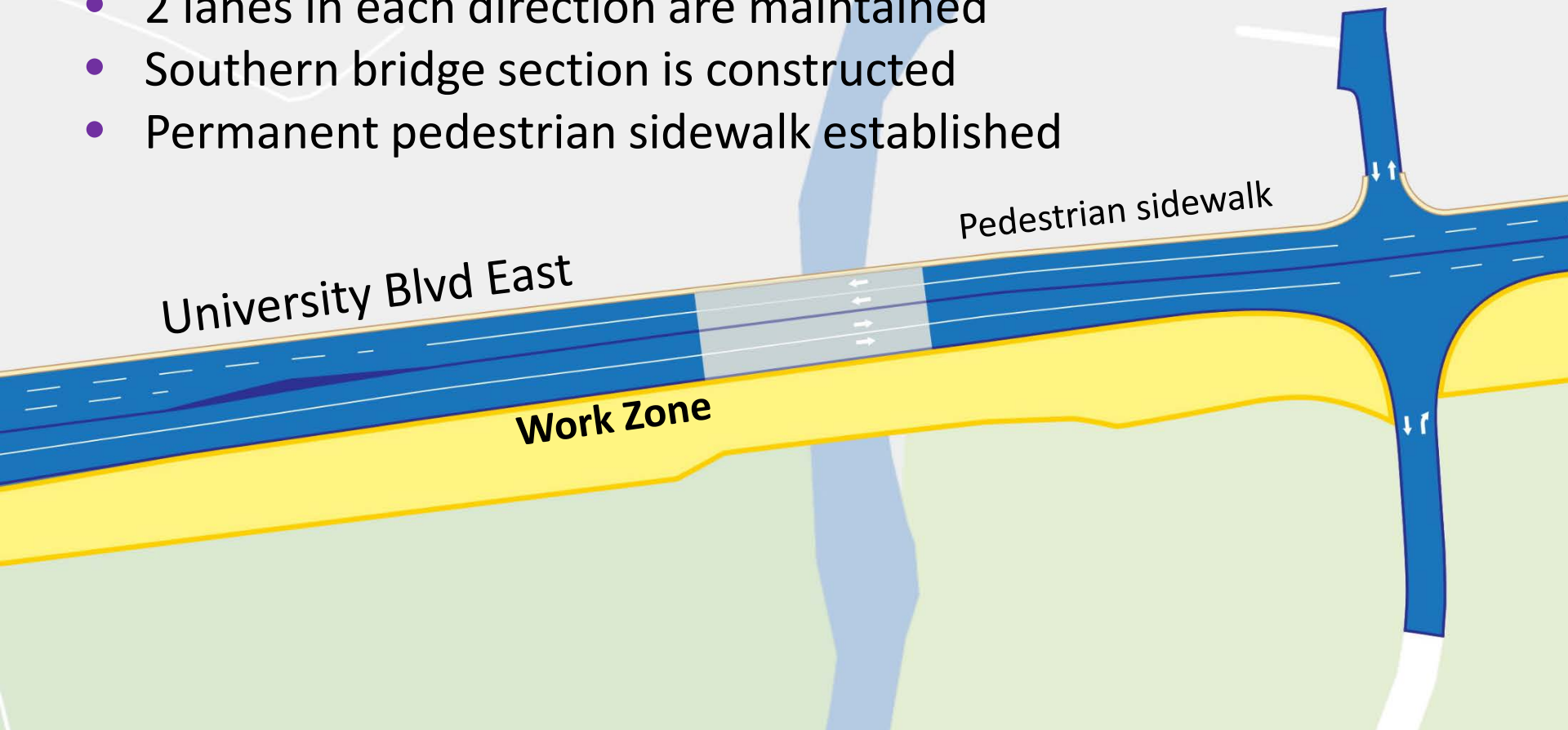
## University Blvd. East bridge Construction Phase 1 – Fall 2018

- Traffic is moved to southern side of the bridge
- 2 lanes in each direction are maintained
- Northern bridge section is constructed
- Install temporary crosswalk for access to south pedestrian path



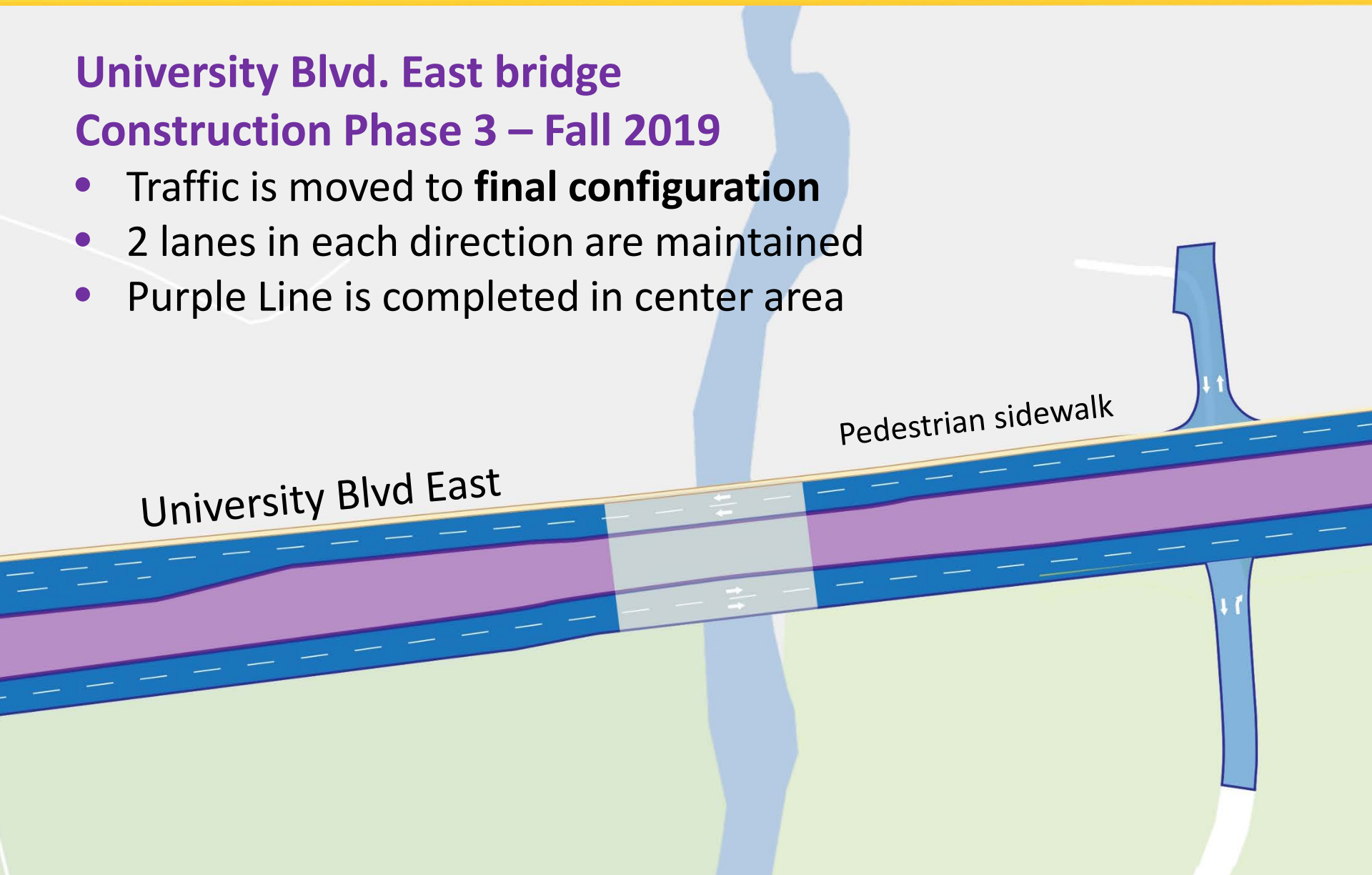
## University Blvd. East bridge Construction Phase 2 – Spring 2019

- Traffic is moved to **new** northern side of the bridge
- 2 lanes in each direction are maintained
- Southern bridge section is constructed
- Permanent pedestrian sidewalk established

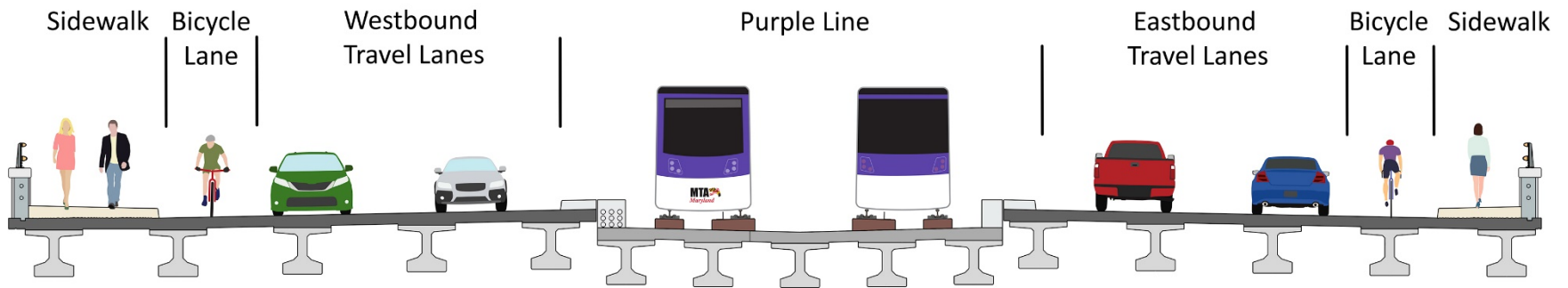


## University Blvd. East bridge Construction Phase 3 – Fall 2019

- Traffic is moved to **final configuration**
- 2 lanes in each direction are maintained
- Purple Line is completed in center area



## University Blvd. East bridge Final configuration



## Business outreach

- Work with businesses impacted by construction on an individual basis
- Vehicle and pedestrian access to all businesses will be maintained during construction
- Work with businesses to make sure deliveries are accommodated during construction
- Provide open for business signage where appropriate
- Outreach efforts are coordinated in English and Spanish as needed

## Transit coordination

**Purple Line team is working with the counties and has met with agencies operating:**

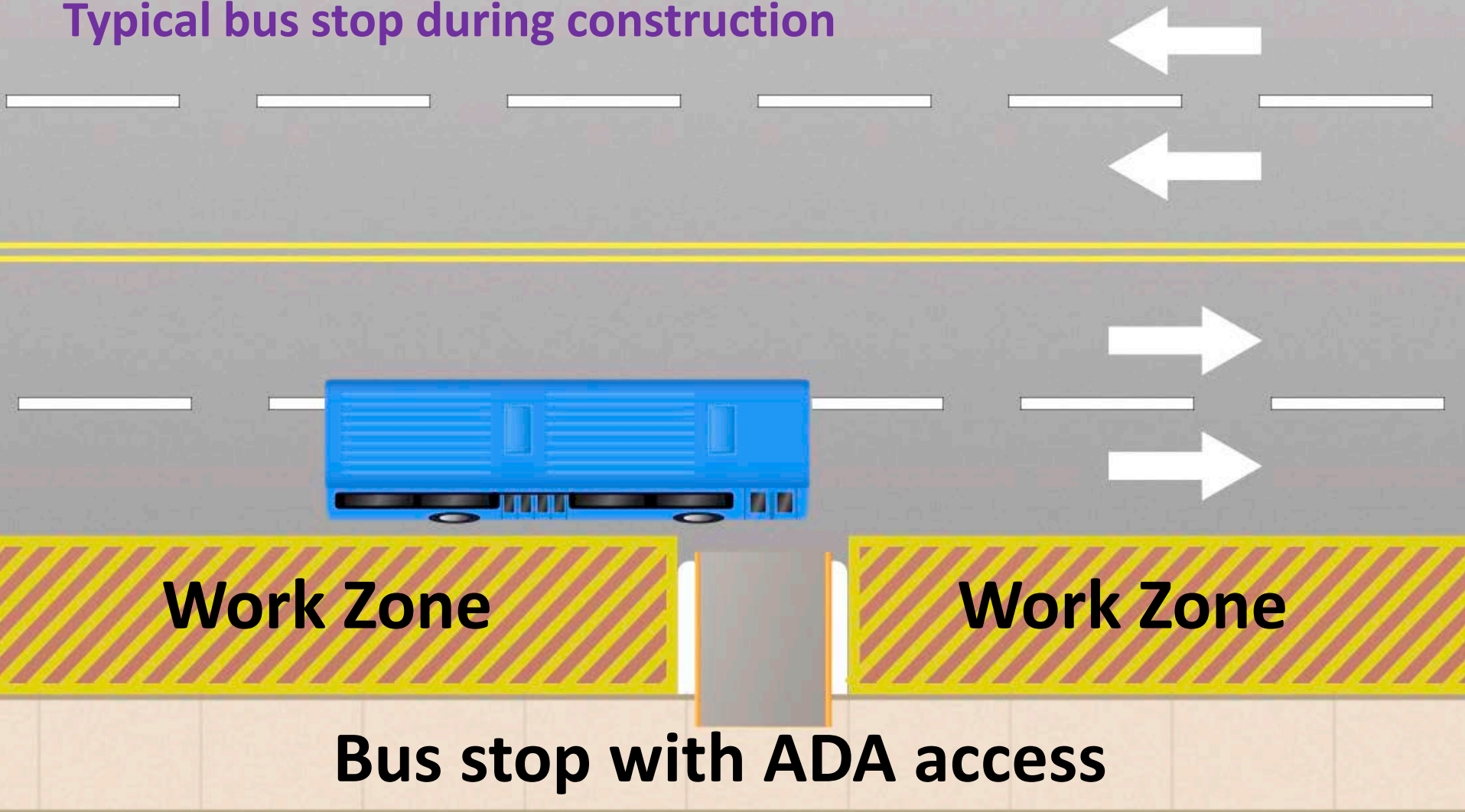
- MetroBus
- RideOn (Montgomery Co)
- TheBus (Prince George's Co)
- The Shuttle (UMD)

**Coordination could include**

- Bus stop locations
- Route modifications



## Typical bus stop during construction



## Construction work hours

- Standard work week is 40 hours
- Make up / maintenance day will be Saturday
- Typical day shift: 7 AM – 5 PM
- Typical night shift: 8 PM – 4:30 AM
- Typical traffic lane closure: 9 AM – 3 PM

## Stay up to date on Purple Line progress

- Sign up for construction notices at **Purplelinemd.com**
- For construction related questions and concerns, contact PLTP:
  - Email at [outreach@pltcllc.com](mailto:outreach@pltcllc.com)
  - 24/7 hotline at **240-424-5325**
- For general project questions and comments, contact MTA public outreach:
  - Email at [outreach@purplelinemd.com](mailto:outreach@purplelinemd.com)
  - Call **443-451-3706** or **443-451-3705 (Español)**