



College Park

CAT Meeting #9

June 16, 2022

INTRODUCTIONS



Gary Witherspoon

Deputy Project Director - Public Outreach

Kevin Oberheim

Construction Manager

Dwain Sanders

Operations Manager

Carla Julian

Stakeholder Manager

MEETING OVERVIEW

Staff Introduction

Project Update

Construction Progress
Overview

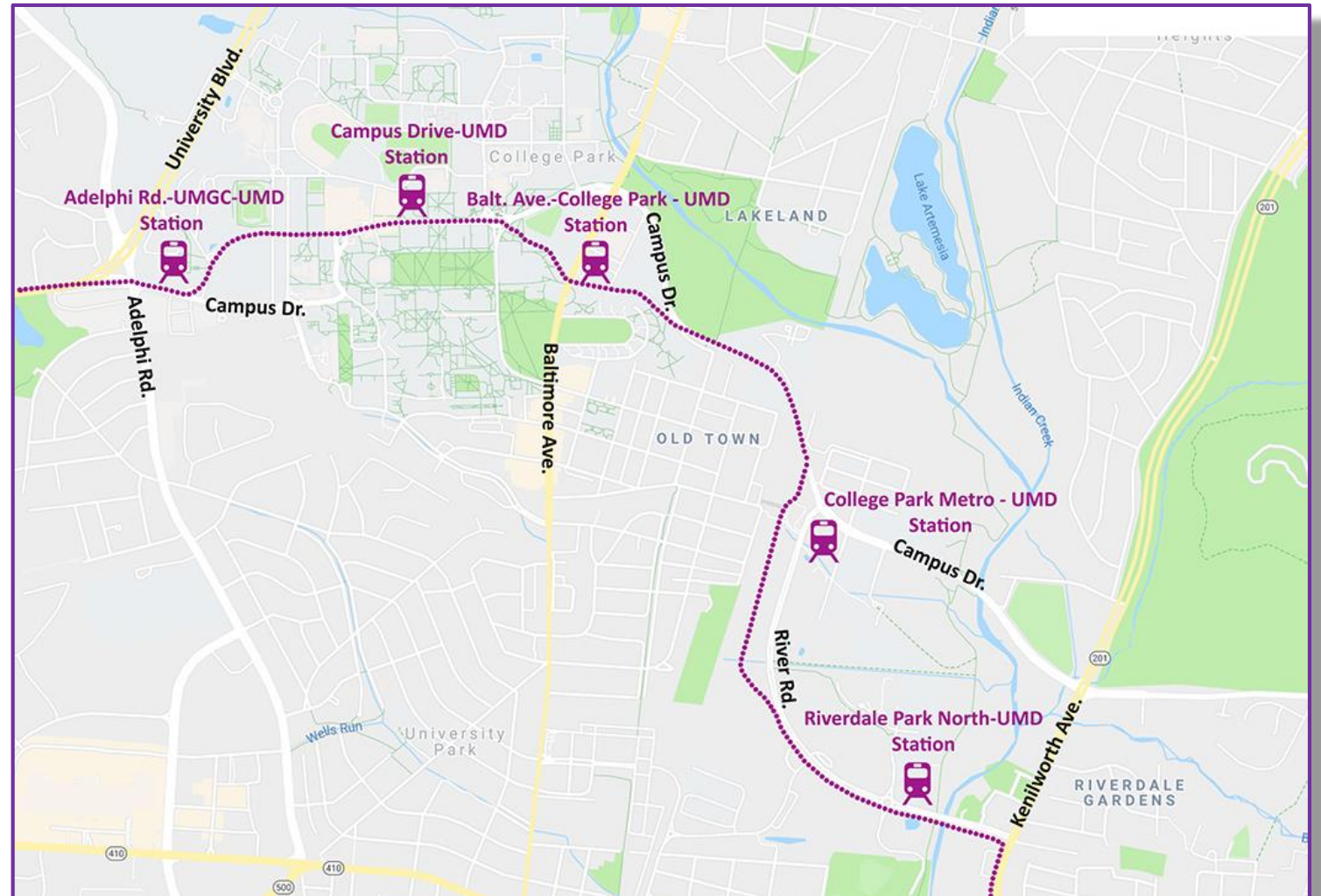
- Work Completed
- Progress Photos
- Upcoming Work

Questions & Answers



COLLEGE PARK CAT SEGMENT

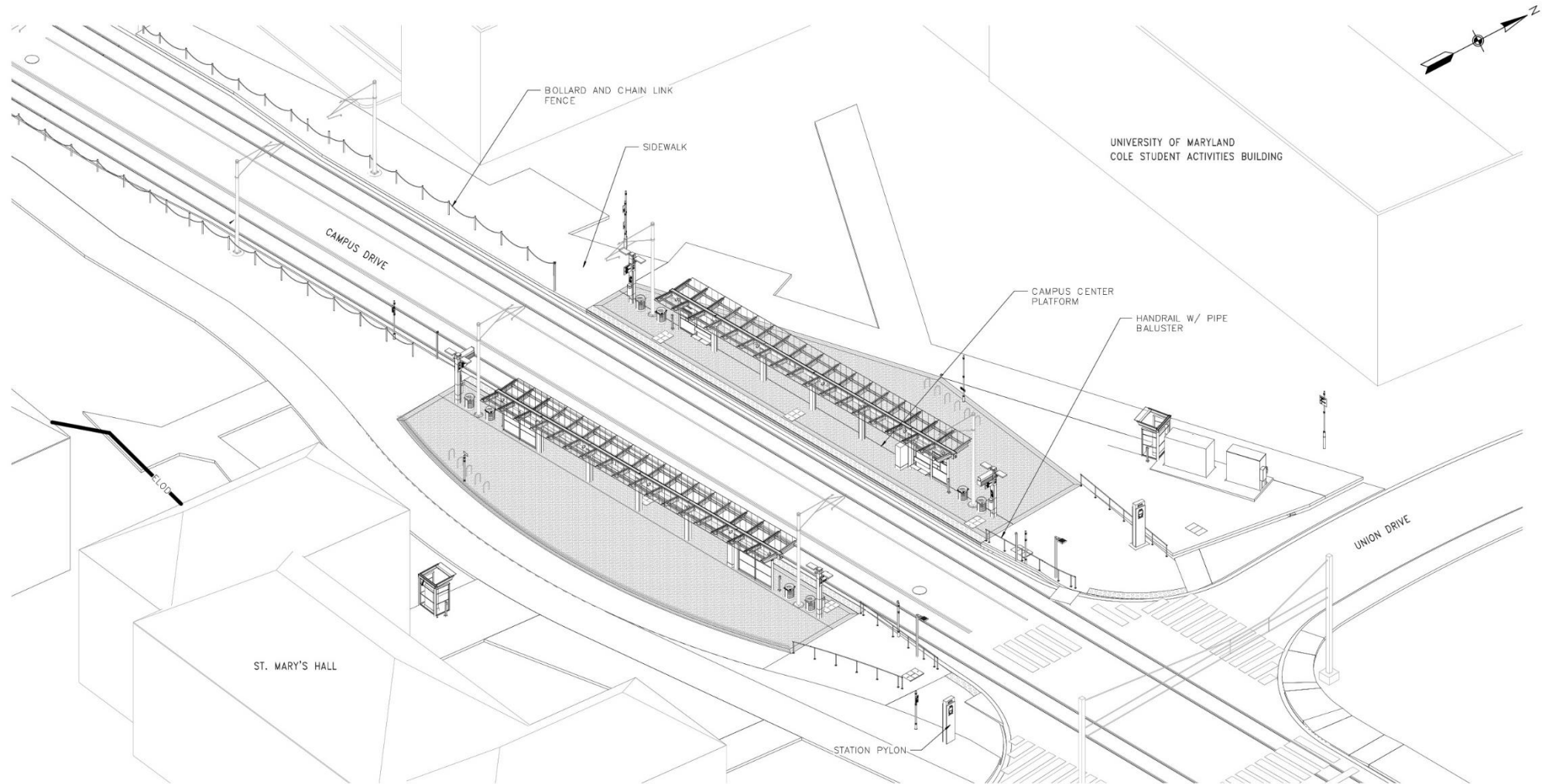
- Adelphi Road – UMGC – UMD
- Campus Drive – UMD
- Balt. Ave. College Park – UMD
- College Park Metro – UMD
- Riverdale Park North – UMD



CAMPUS DRIVE – UMD STATION



CAMPUS DRIVE – UMD – STATION PLAN



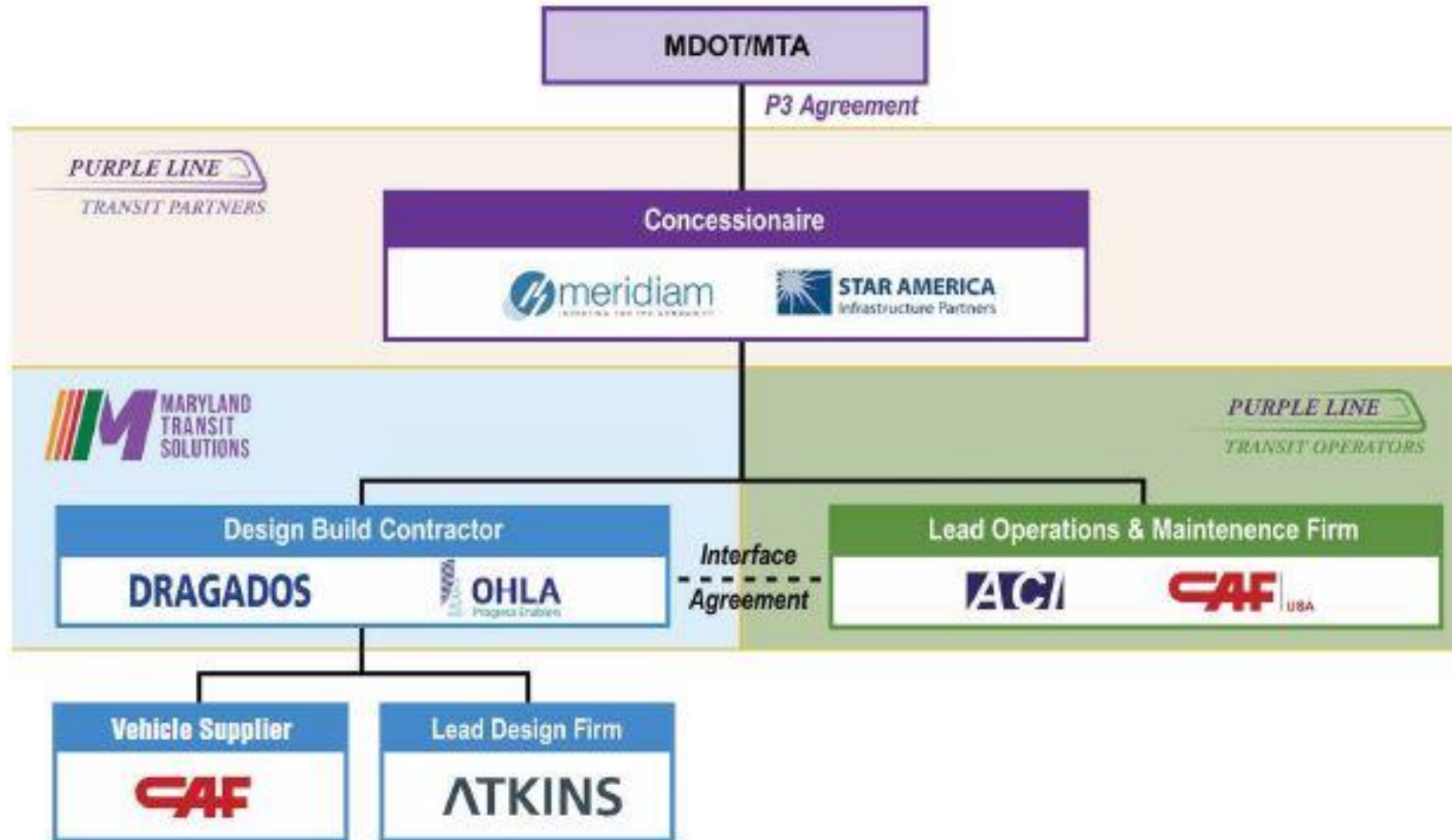
CAMPUS DRIVE - UMD STATION

NEW DESIGN BUILDER



- Modified contract unanimously approved by the Maryland Board of Public Works in January 2022
- Maryland Transit Solutions (MTS) signed as the new Design-Builder in April 2022
- Construction firms Dragados USA and OHL USA bring extensive experience with megaprojects, including the Los Angeles LAX Airport People Mover and the Long Island Railroad East Side Access project in New York
- Purple Line scheduled to begin service at the end of 2026
- Construction ramping up this summer

PROJECT ORGANIZATIONAL STRUCTURE



PROJECT ACCOMPLISHMENTS



Over the past 18 months MDOT MTA advanced construction by progressing completion of:

- 77% of underground utility relocations
- 17 walls
- College Park Bus Loop
- Startup and commissioning of the Glenridge Operations and Maintenance Facility

PROJECT TIMELINE



LIGHT RAIL VEHICLE (LRV)

- Light rail vehicle production continues, with 22 of 26 produced and 16 ready to ship
- Delivery to begin Fall 2023 to the Glenridge Operations and Maintenance Facility
- 80 seats available, 400 standing room capacity
- Low floor with wide doorways
- Flexible space and folding seats to allow for eight wheelchairs and bicycle storage



WORK OVER THE PAST SIX MONTHS

Maintenance and upkeep

- Pothole/roadway resurfacing
- Erosion and sediment control
- Mowing/site cleanup



WORK OVER THE PAST SIX MONTHS (CONT.)

Campus Drive

- Continued underground and overhead utility relocations (water, sewer, steam, electric)



WORK OVER THE PAST SIX MONTHS (CONT.)

Campus Drive

- Completed sidewalk reconstruction along Campus Drive (near Stamp Student Union)



Campus Drive Underpass

- Began sidewalk reconstruction
- Completed Campus Drive pump station

River Road

- Completed resurfacing



College Park Bus Loop

- Opened for service Sunday, June 12
- Permanent bus shelters to be constructed by WMATA
- Other completed work includes paving, stormwater management facility, landscape, lighting



University of Maryland (UMD) Campus

- Complete remaining underground and overhead utility relocations – water, sewer, steam and electric

Campus Drive Underpass

- Complete sidewalk reconstruction

College Park Bus Loop

- Complete sidewalk restoration

Campus Drive Underpass

- Implement Phase II of the traffic shift to one lane in each direction from Rossborough Lane to River Road to allow the installation of the eastbound LRV tracks
 - Construction is expected to take one year
 - Pedestrian access will not be disrupted
 - Notification will be given prior to implementation of traffic shift



University of Maryland (UMD) Campus

- Begin stormwater drainage

River Road

- Begin stormwater drainage work



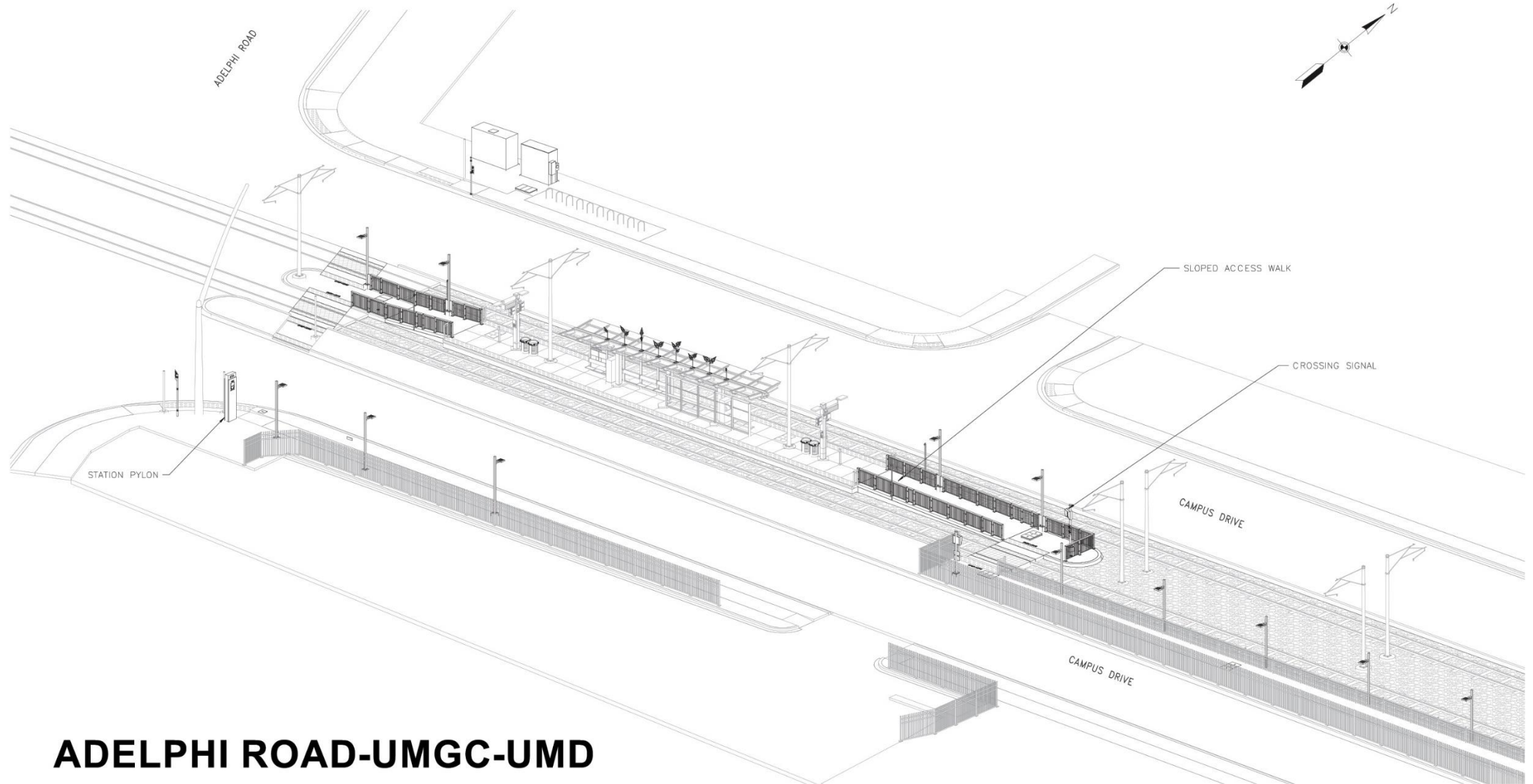
TYPICAL CENTER PLATFORM RENDERING

- Adelphi Road –
UMGC – UMD
- College Park
Metro – UMD



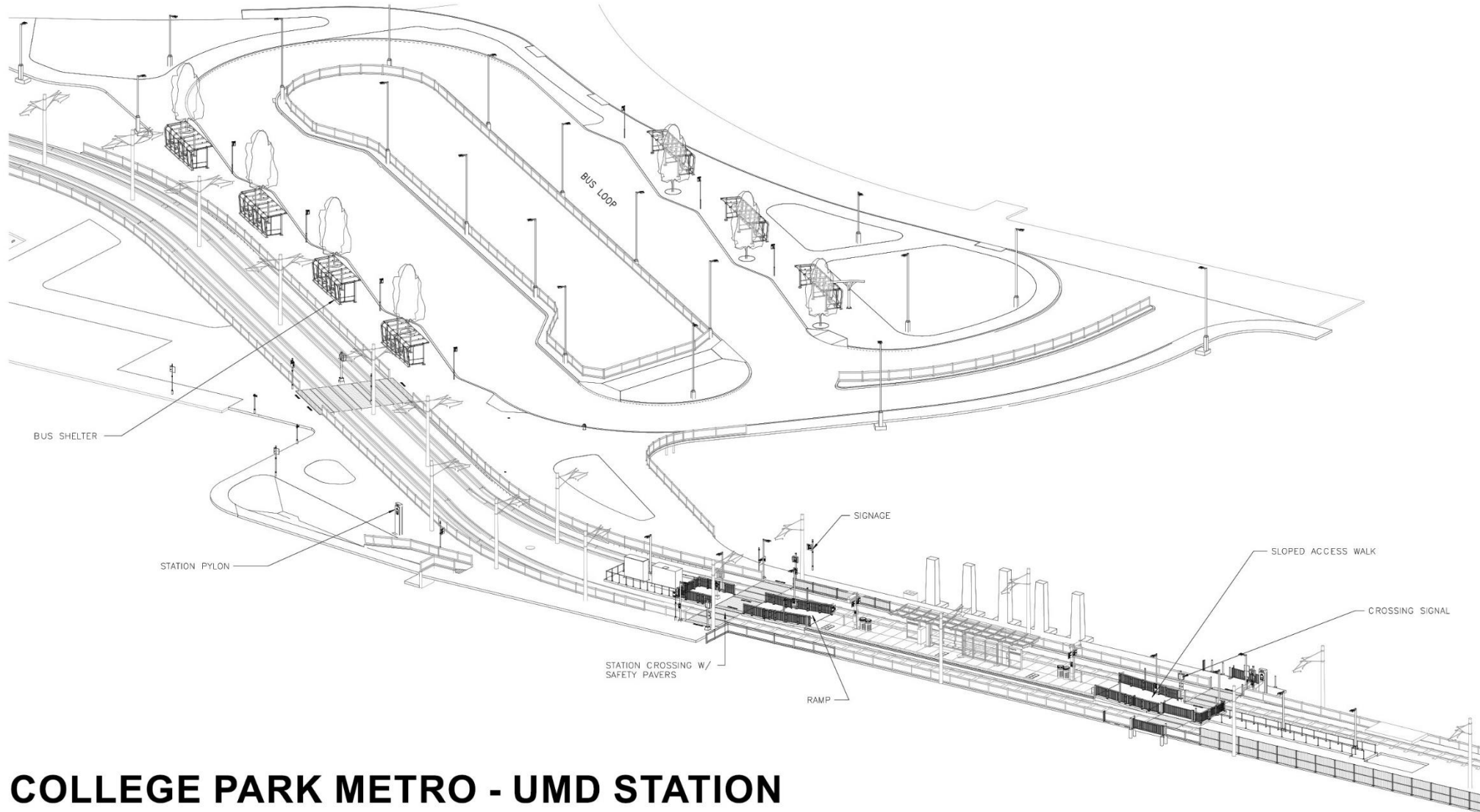
Note – Artist rendering station features included may not be final or represent the exact landscape of the area. Art-in-Transit selection not featured.

ADELPHI ROAD – UMGC – UMD – STATION PLAN



ADELPHI ROAD-UMGC-UMD

COLLEGE PARK METRO- UMD – STATION PLAN



COLLEGE PARK METRO - UMD STATION

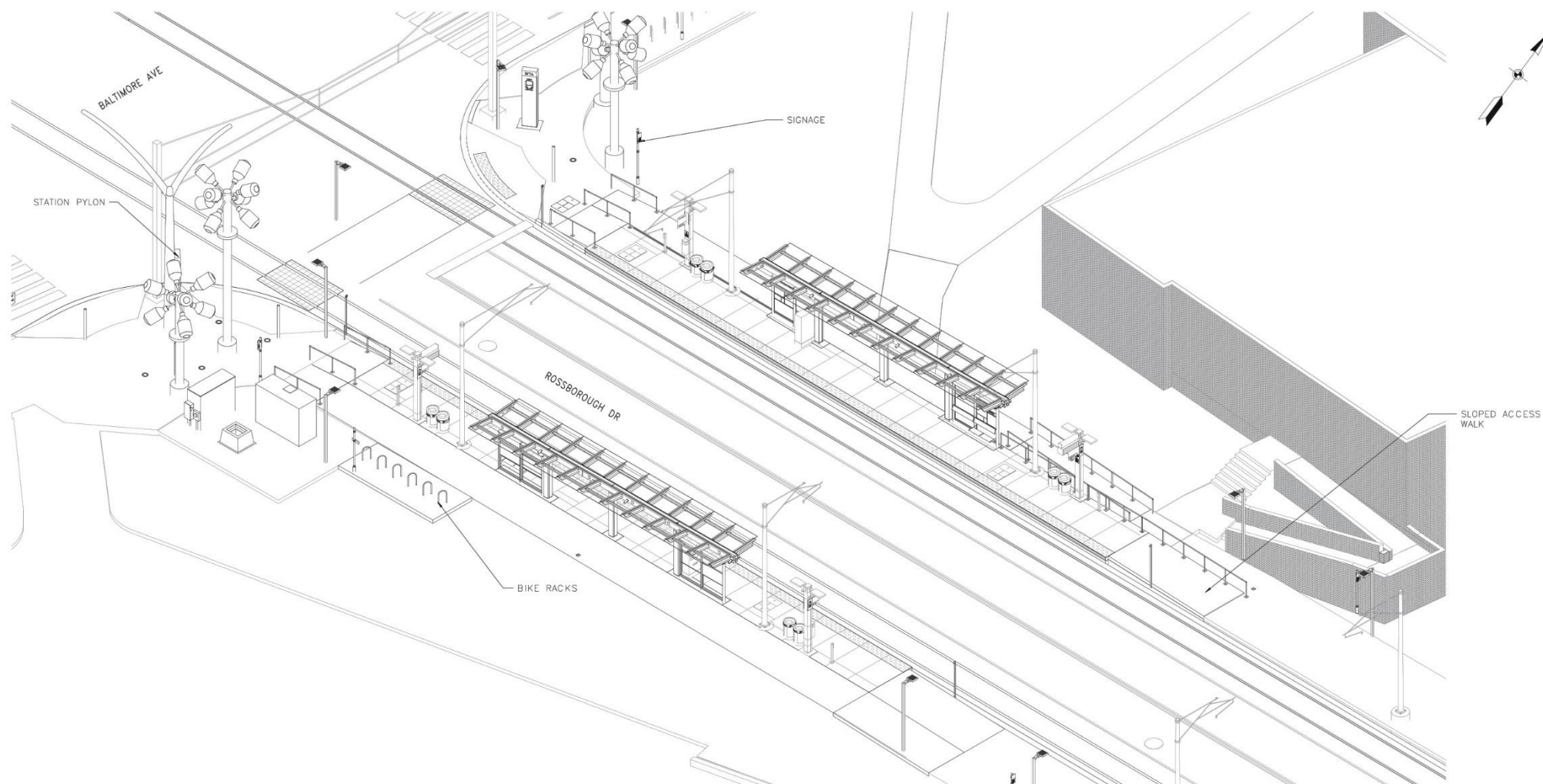
TYPICAL SIDE PLATFORM RENDERING

- Balt. Ave. –
College Park
– UMD
- Riverdale
Park North –
UMD



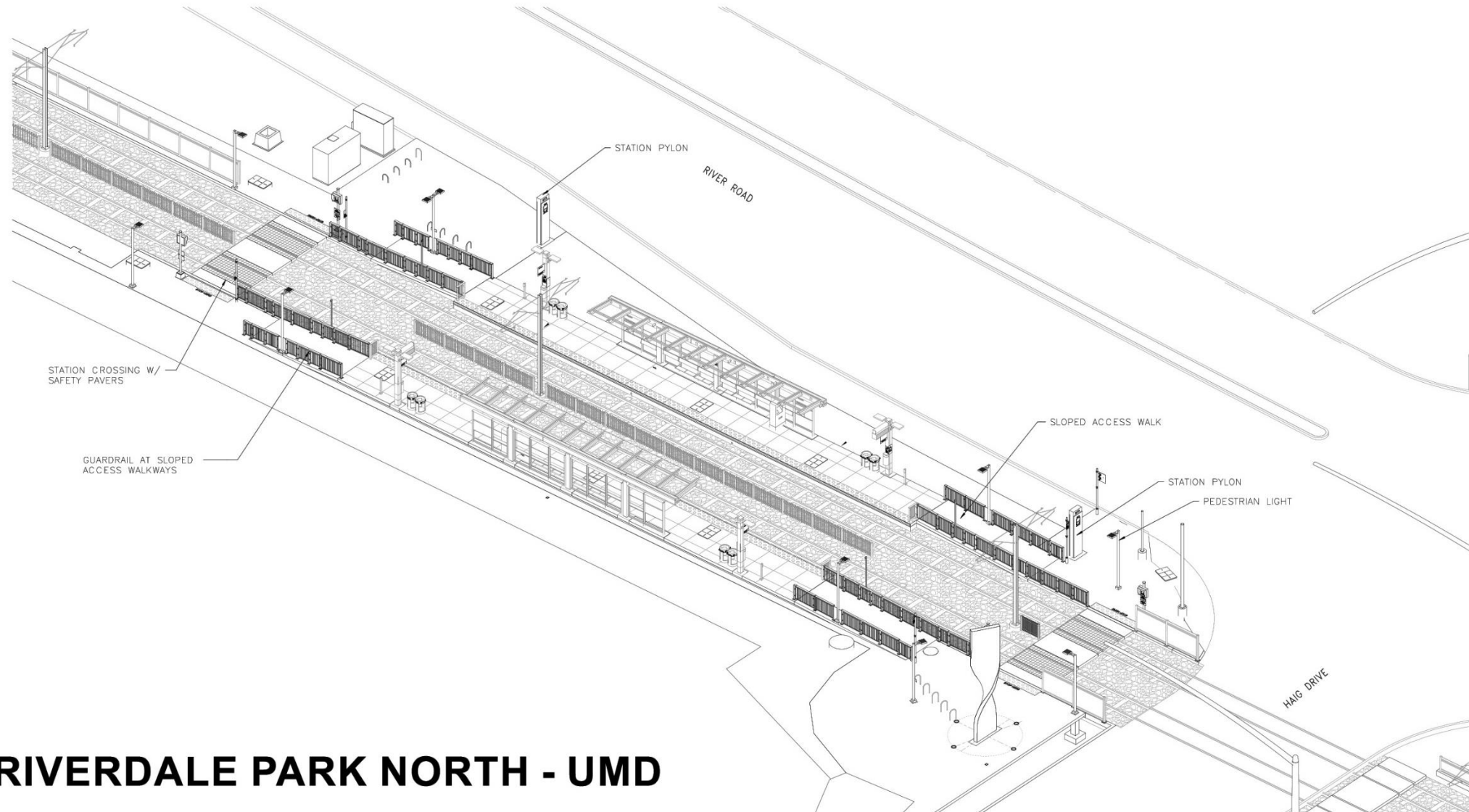
Note – Artist rendering station features included may not be final or represent the exact landscape of the area. Art-in-Transit selection not featured.

BALT. AVE. – COLLEGE PARK – UMD STATION PLAN



BALT. AVE. - COLLEGE PARK - UMD

RIVERDALE PARK NORTH – UMD STATION PLAN



RIVERDALE PARK NORTH - UMD

MAINTENANCE OF TRAFFIC – WHAT TO EXPECT

- Existing traffic patterns will change as work occurs, as needed
- Work may occur on both sides of the road and across roadways
- When a lane closure is required, a notice will be distributed via text and email (sign-up required through purplelinemd.com)
- Orange cones and barrels (temporary barricades) will be in place
- Flag-person, when required, will direct traffic
- Underground utility work may require temporary road plates



STAY UP-TO-DATE



Register for Construction Updates:

purplelinemd.com

Email Us:

outreach@purplelinemd.com

Call Us:

443-451-3706/443-451-3705 (Español)

Follow Us:

[@purplelinemd](https://www.instagram.com/purplelinemd)



QUESTIONS?



THANK YOU