



# University Boulevard

CAT Meeting #8

May 19, 2021

# MEETING OVERVIEW

- Introduction and Ground Rules
- Project Status
- Light Rail Vehicle
- Construction Update
- Stay Up-To-Date
- Questions

## **Matthew Pollack, PE, PMP**

Executive Director, Transit Development and Delivery

## **Vernon G. Hartsock, PMP**

Project Director

## **Anita Rodgers**

Acting Deputy Project Director, Contracting Officer

## **Gary Witherspoon**

Deputy Project Director Public Outreach & Communications

# GROUND RULES

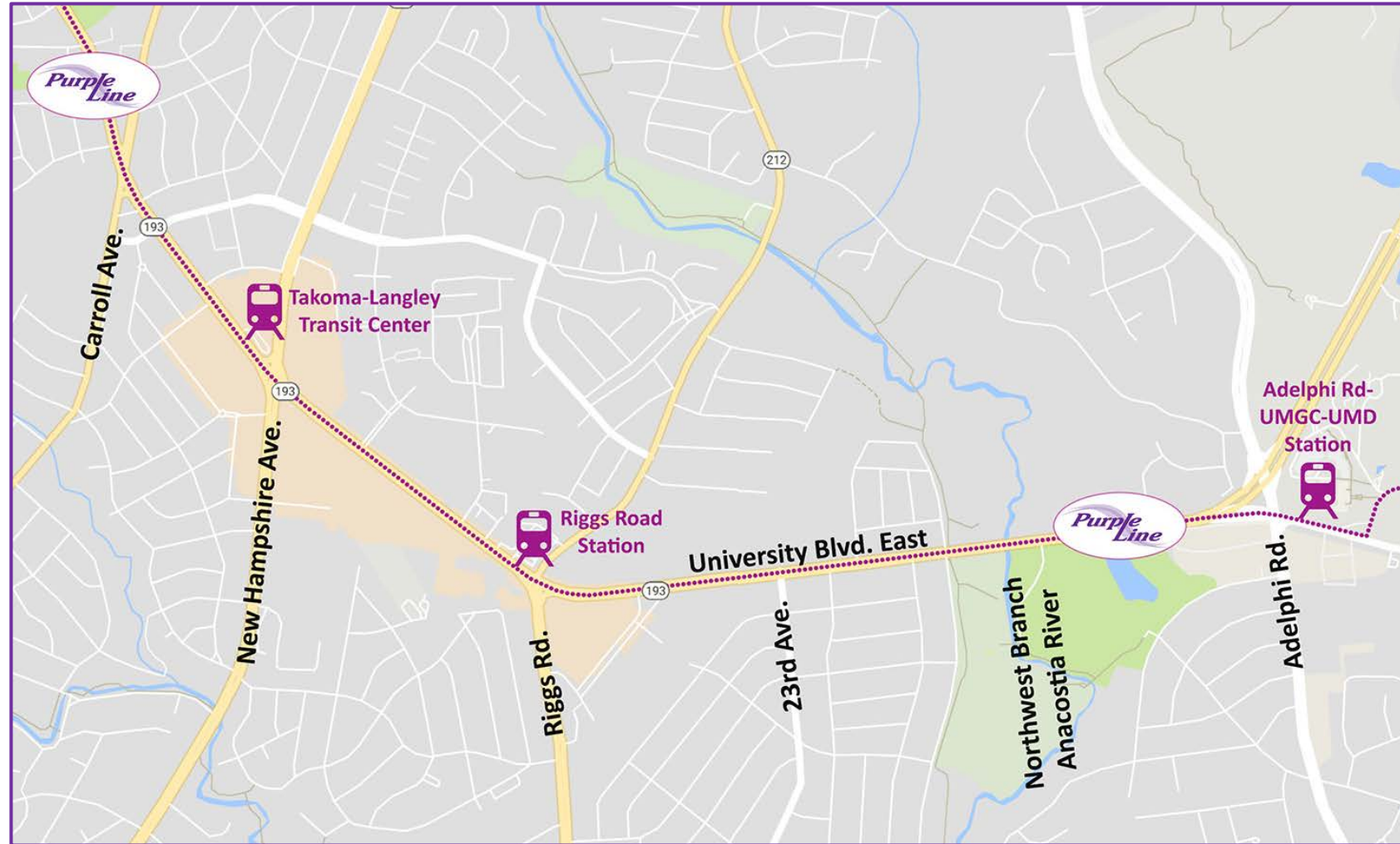
- Everyone is treated courteously and with respect – no rude comments please
- Everyone should feel welcome to participate
- Please hold your questions until the end of the meeting and take turns, one at a time, wait to be called on
  - To ask a question, please “raise your hand”
- We will accept questions and comments from CAT members first then open it to the general public

# UNIVERSITY BOULEVARD CAT SEGMENT



## Stations in this segment:

- Takoma-Langley
- Riggs Road
- Adelphi Road - UMGC - UMD



# PURPLE LINE PROJECT UPDATE



- Settlement agreement was approved by the Board of Public Works and Purple Line Transit Partners (PLTP) has started the procurement process to re-solicit the project for a new design-build contractor
- MDOT MTA (jointly with PLTP) will have final approval over selected replacement design-build contractor
- MDOT MTA has continued to manage and advance construction during this interim period

# PLTP's PROCUREMENT TIMELINE

PLTP's key milestones for the procurement process include:

Milestone	Estimated Timeframe
✓ Issued Request for Qualifications	January 8, 2021
✓ Received Statements of Qualifications	February 18
✓ Short-List Teams	March 3
✓ Issued Request for Proposals	March 8
Select Contractor	Summer 2021
Board of Public Works Review/Approval	Fall 2021

# LIGHT RAIL VEHICLES

- MDOT MTA has been working directly with CAF to progress production of vehicles
  - All 130 car shells are fabricated
  - 94 car shells have been painted
    - 82 are in Elmira, NY for assembly
    - 5 are in transit from Spain to Elmira
    - 7 are awaiting shipment from Spain to Elmira



# WORK CONDUCTED OVER THE PAST 6 MONTHS



- Primary focus has been on utility relocations both underground and overhead
  - WSSC waterline and sewer work
  - Pepco
  - Washington Gas
- These utility relocations will continue through the end of 2021
- Continued construction of the Northwest Branch Bridge for the Light Rail Vehicle and vehicular traffic including deck work and retaining walls
- Completed Adelphi Plaza entrance reconstruction

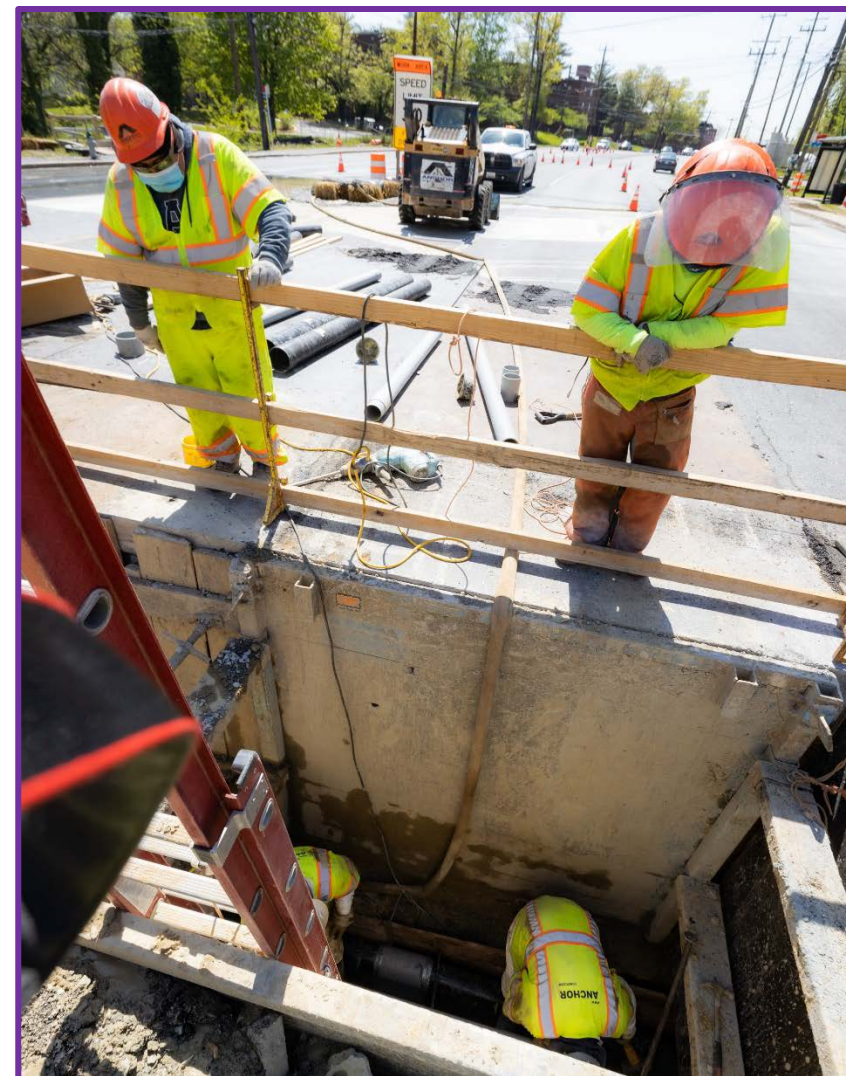
# NORTHWEST BRANCH BRIDGE CONSTRUCTION



Northwest Branch Bridge deck pour pictured above and waterproofing pictured to the right.



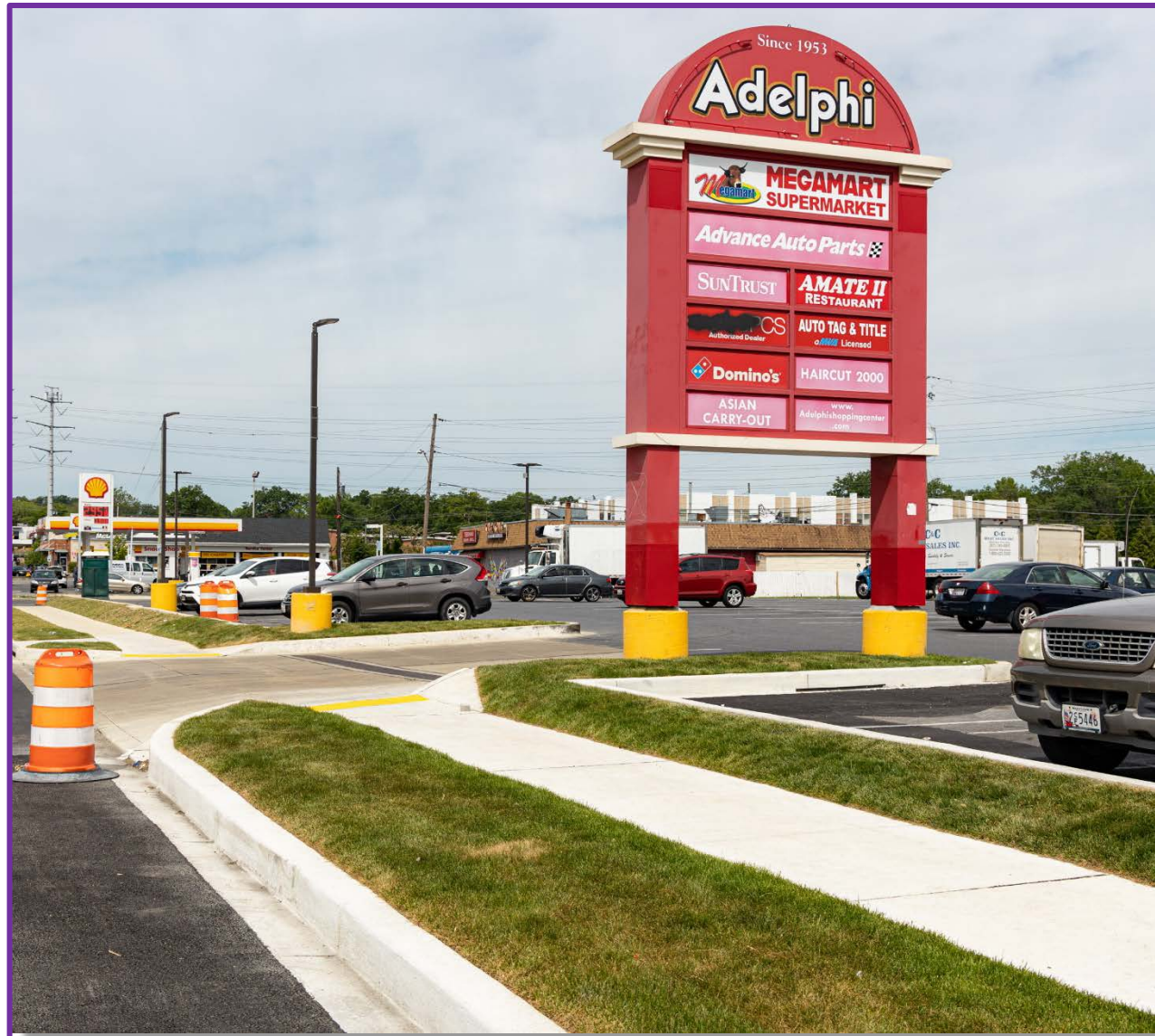
# UTILITY RELOCATIONS



Underground utility relocations on University Boulevard.

# ADELPHI PLAZA ENTRANCE

Adelphi Plaza  
shopping center  
reconfiguration.



## 6-MONTH LOOK AHEAD

- Continue utility relocations both underground and overhead
  - WSSC waterline and sewer work
  - Pepco
  - Washington Gas
  - Verizon
- The Northwest Branch Bridge traffic will be switched to the westbound bridge and eastbound bridge will be closed at that time
- Continuation of sidewalks, gutters, storm drain installation, driveway connections and roadwork widening from Temple St. to West Park Dr. on University Blvd.

# CONSTRUCTION WORK HOURS

- Typical day shift: 7 a.m. – 5 p.m.
- Typical night shift: 7 p.m. – 4:30 a.m.
- Make-up / maintenance day will be Saturdays, as required
- [Purplelinemd.com](http://Purplelinemd.com) hosts notifications for all work zones and hours in which work will be conducted as well as any lane closures needed

# MAINTENANCE OF TRAFFIC – WHAT TO EXPECT

- Existing traffic patterns will change as work occurs, as needed
- Work may occur on both sides of the road and across roadways
- When a lane closure is required, a notice will be distributed via text and email (sign-up required through [purplelinemd.com](http://purplelinemd.com))
- Orange cones and barrels (temporary barricades) will be in place
- Flag-person, when required, will direct traffic
- Underground utility work may require temporary road plates



# NEW BUSINESS ENGAGEMENT TEAM



- The MDOT MTA recently established a Business Engagement Team in the Purple Line project management office to foster relationships with those businesses along the alignment that may be impacted.
- The team consists of:

## **Shaquanna Shields**

Business Relationship Manager

[shaquanna.shields@purplelinemd.com](mailto:shaquanna.shields@purplelinemd.com)

1-443-388-3311

## **Marlene Veras**

Business Engagement Officer for  
Prince George's County

[marlene.veras@purplelinemd.com](mailto:marlene.veras@purplelinemd.com)

1-443-802-1608

## **Minh Diep**

Business Engagement Officer for  
Montgomery County

[minh.diep@purplelinemd.com](mailto:minh.diep@purplelinemd.com)

1-551-206-5889

# STAY UP-TO-DATE



- Sign up for construction notices at [purplelinemd.com](http://purplelinemd.com) to receive construction updates via email or text message
- Our outreach team is available to answer your questions and comments through email or phone:
  - [outreach@purplelinemd.com](mailto:outreach@purplelinemd.com)
  - 443-451-3706 or 443-451-3705 (Para Español)
- Follow us on social media:



/MarylandPurpleLine



@PurpleLineMD

# QUESTIONS SUBMITTED PRIOR TO MEETING



- President Biden and Sec. of Transportation are both big fans of trains! Is there any effort underfoot to have either of them tour the Purple Line site and express their enthusiasm for this project?
- Did the Purple Line gain any needed additional funding with the passage of the American Recovery Act or the previous coronavirus relief bills?
- When do we think tracks will begin being laid down--are they already in some places? And when do we think we'll expect peak construction between New Hampshire and Riggs?
- Is there any concern on the part of Maryland that the proposed Maglev train would divert funding needed for the Purple Line?



QUESTIONS?

# THANK YOU FOR YOUR PARTICIPATION!

Please email your questions to [outreach@purplelinemd.com](mailto:outreach@purplelinemd.com) by May 26, to be included in the Q&R that will be posted online.