



# Silver Spring International Middle School PTSA Sligo Creek Elementary School PTA

May 4, 2017



# What's the status of the Purple Line?

- Purple Line is being delivered as a Public-Private Partnership (P3) to complete design, construction, operation, maintenance and financing
- Right-of-Way offers and property settlements are continuing
- Selection of P3 concessionaire announced on March 2, 2016
- Maryland Board of Public Works approved P3 Concessionaire contract with the Purple Line Transit Partners (PLTP) on April 6, 2016.
- Pre-construction activities such as survey work, geotechnical investigations, and design underway
- Construction start scheduled for late 2016 delayed due to U.S. District Court ruling
- Anticipated construction start - Spring 2017
- Service expected to begin - Spring 2022



# Purple Line Light Rail Vehicle



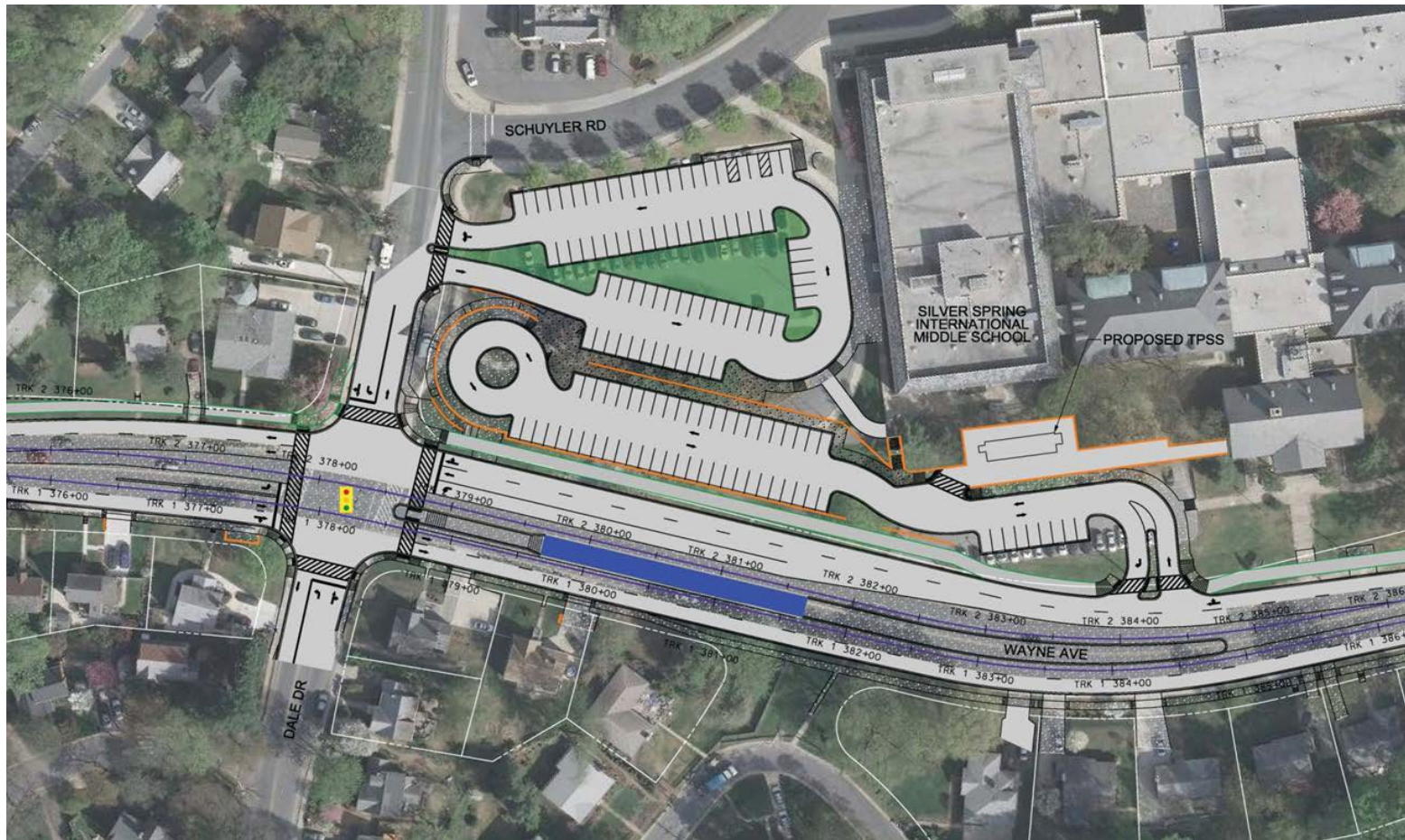
- 5-module multiple-articulated light rail vehicle
- Single car that is 139' long
- 80 seats are provided
- Electrically-powered vehicle with overhead contact system
- 80% Low Floor – easy on/off boarding







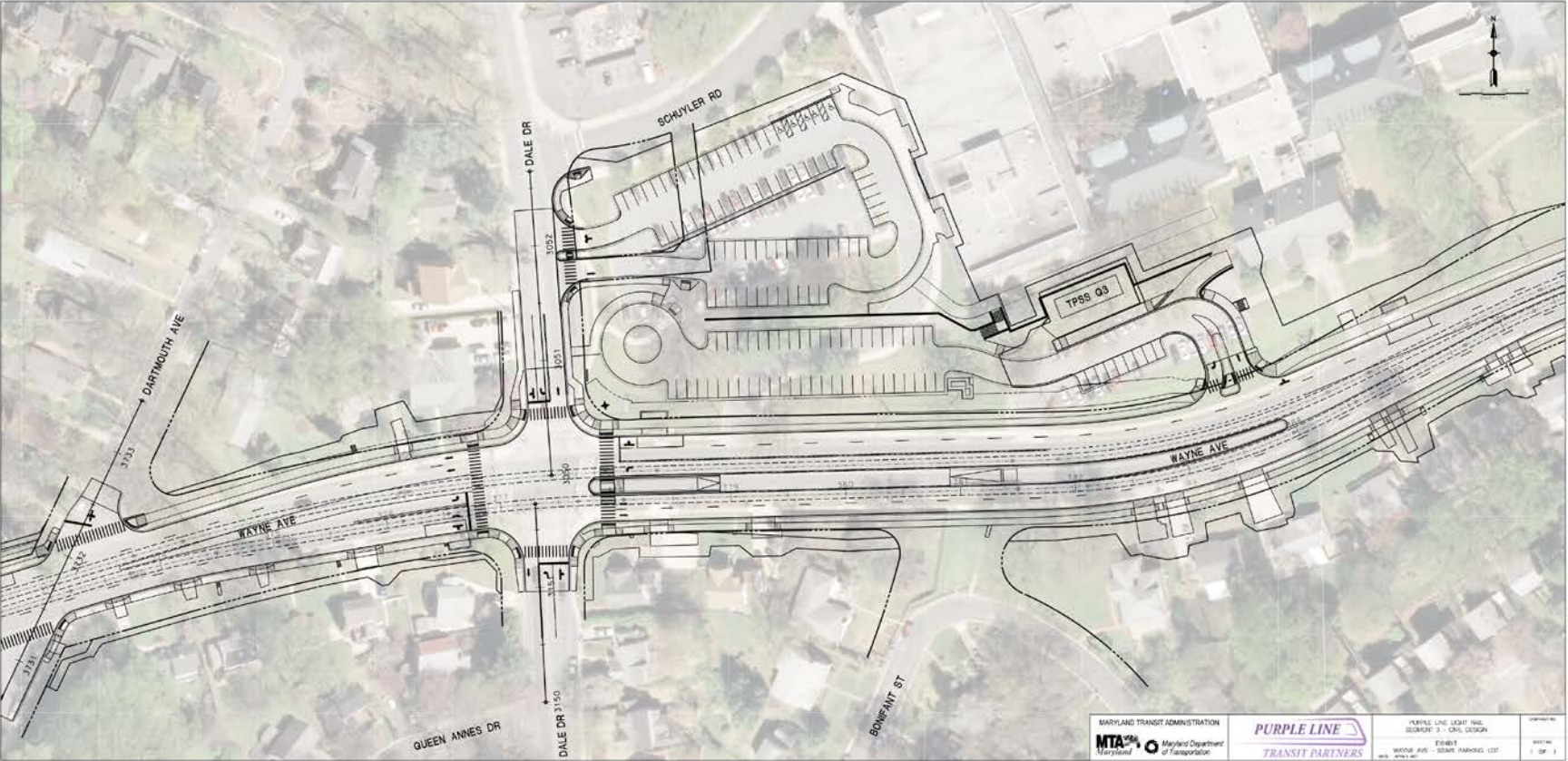
# SSIMS Site Plan – Presented November 2014







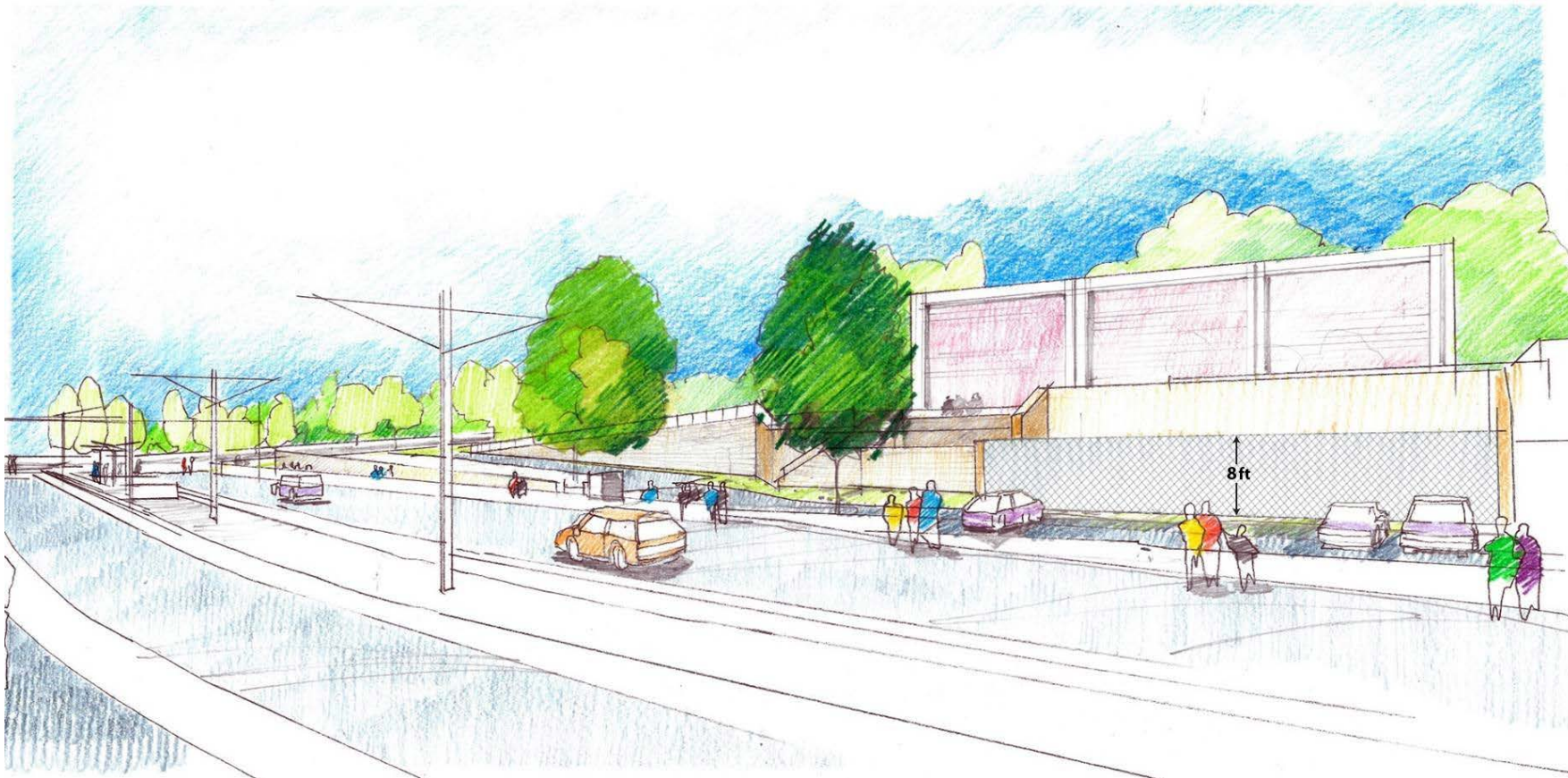
# Updated Site Plan – April 2017







# SSIMS—TPSS and Screened Fence



\*This is a previous rendering that will be updated



# Wayne Avenue

In response to comments from the community, MTA and Montgomery County have worked together to develop the following improvements at the Wayne Avenue/Dale Drive intersection:

## Design Changes

- The light rail is now combined with the westbound left turn lane
- Green buffer is added along the southeast side of Wayne Avenue between the sidewalk and street near the intersection
- Green buffer between Green Trail and roadway is restored along the northwest side of the intersection
- Full 200' long platform at intersection will be built
- Trees will be added in the area of the SSIMS
- Prohibition of through trucks on Dale Drive between Wayne and Piney Branch is being considered

## Summary

- Reduces roadway width by roughly one lane east of Dale Drive
- Largely eliminates the wall in front of the school closest to Wayne Avenue
- Additional green buffer areas
- More tree plantings
- Left turn movements from Wayne Ave onto Dale Drive will remain as protected lefts only



# What is a TPSS?



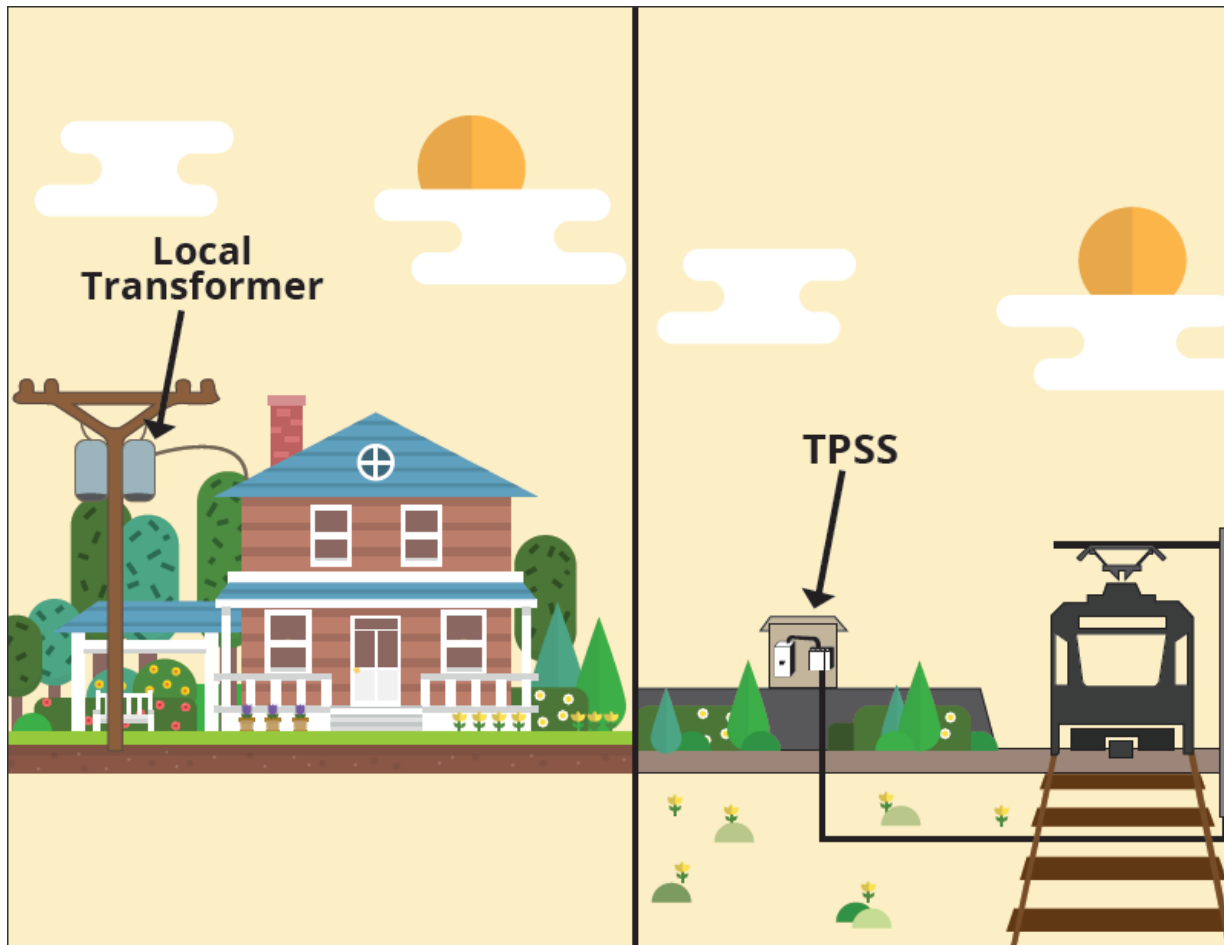


# Light Rail Traction Power Substation (TPSS)

- TPSSs provide power to the light rail trains
- TPSSs are used to convert electrical power supplied by the power utility to a form suitable for providing power to a rail system
- TPSSs get their power from the same PEPCO distribution infrastructure that provide electricity to homes in the neighborhood
- PLTP design allows for less TPSSs along the Purple Line alignment
- TPSSs will be fed by underground electrical feeds
- They are located approximately every two miles along the Purple Line alignment
- TPSSs are completely safe and quiet.

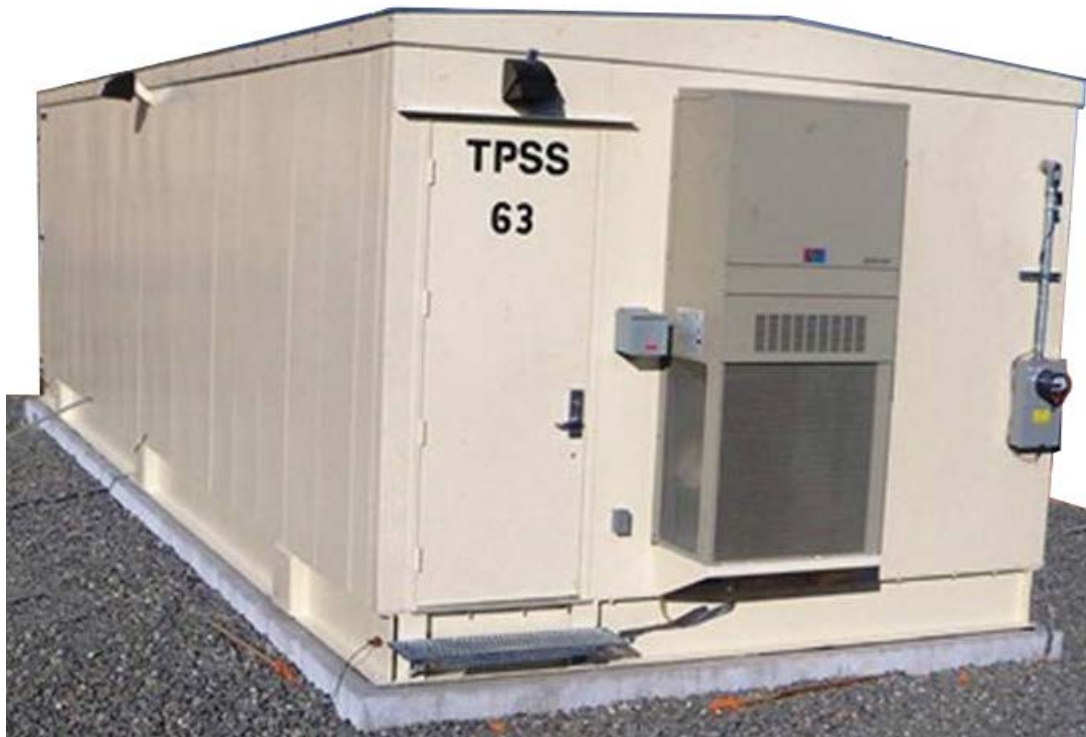


# Traction Power Substation Example





# Light Rail Traction Power Substation



Exterior View

Standard Purple Line TPSSs are approximately 58 feet by 18 feet and will be fed by underground electrical feeds. The TPSSs will operate with 1500VDC which allows the voltage to travel further and reduce the number of TPSSs along the alignment.





# Light Rail Traction Power Substation



Interior View



# Upcoming Community Outreach Efforts & Activities

- **Wayne Avenue Community Associations Meeting**  
**Monday, May 22, 7:00 p.m. at the Silver Spring Civic Center**
- **Prince George's County Open House Meeting**  
**Tuesday, May 23, 6:30 p.m. at College Park Comm. Center**
- **Montgomery County Open House Meeting**  
**Wednesday, May 24, 6:30 p.m. at Montgomery Blair H.S.**
- **CATS – Scheduled to start Summer 2017**



## Questions?

Please contact Public Outreach at:

443-451-3706

[outreach@purplelinemd.com](mailto:outreach@purplelinemd.com)

Mike Madden

Purple Line Deputy Project Director

240-715-5390

[MMadden@mta.maryland.gov](mailto:MMadden@mta.maryland.gov)

Carla Julian

Sr. Manager, Public Affairs/Community Outreach

914-336-0938

[carla.julian@pltcllc.com](mailto:carla.julian@pltcllc.com)

Línea telefónica en español:

443-451-3705

Like us on Facebook [facebook.com/marylandpurpleline](https://facebook.com/marylandpurpleline)

Follow us on Twitter [twitter.com/PurpleLineMD](https://twitter.com/PurpleLineMD)