

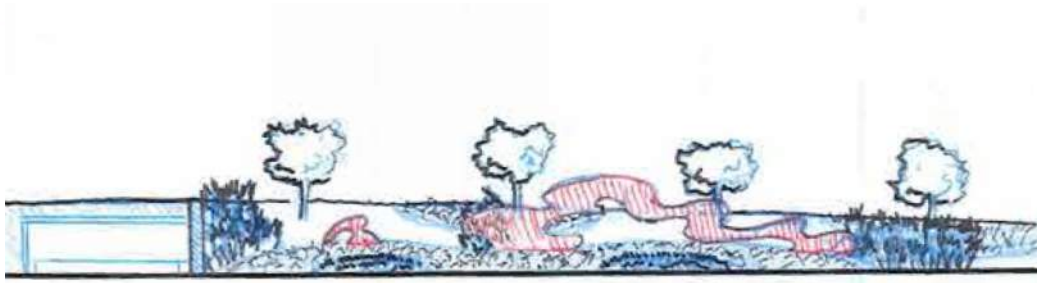
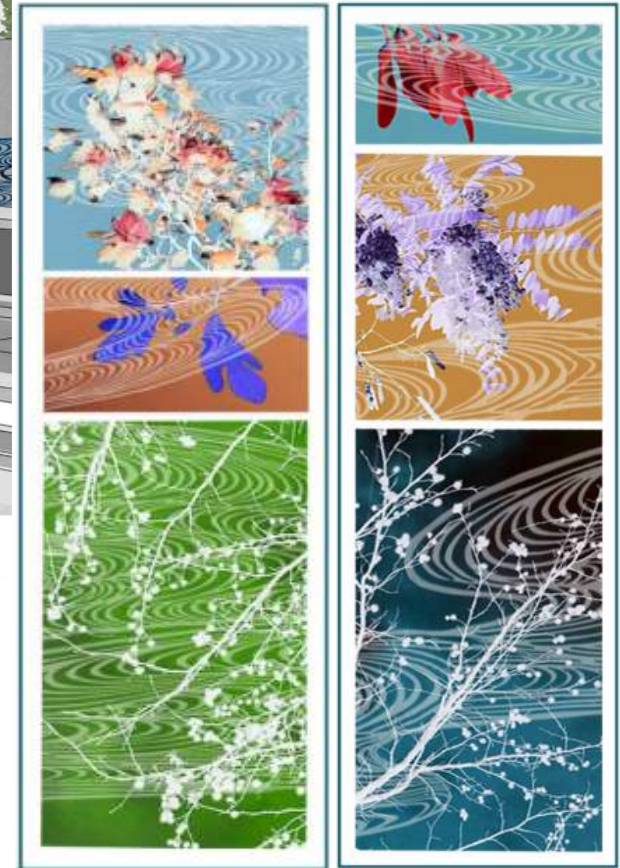
Dale Drive

PURPLE LINE

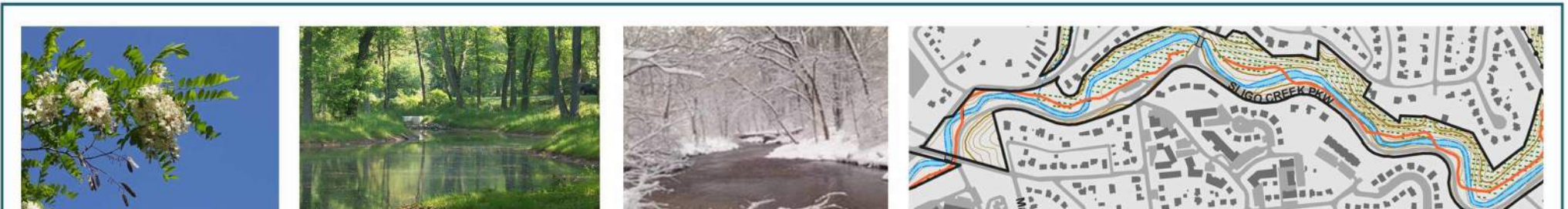
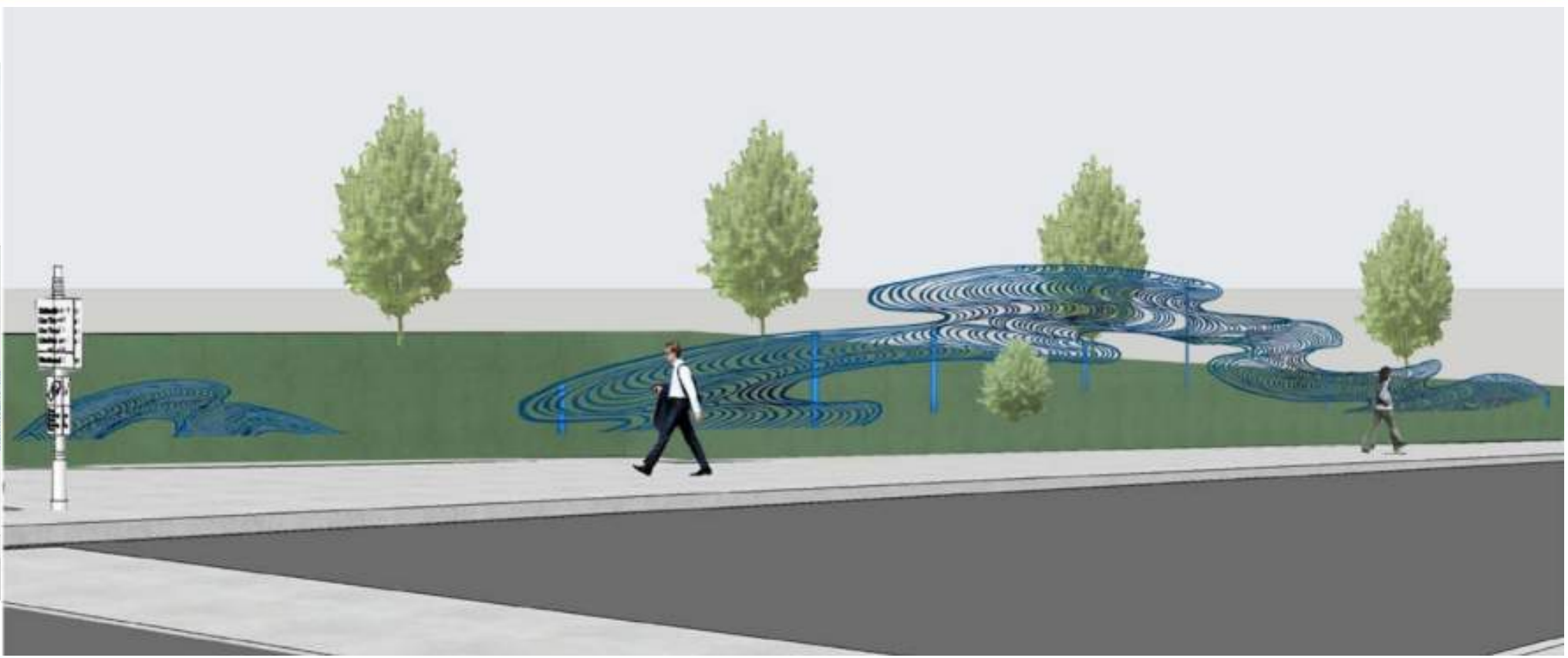
Art-in-Transit

Susan Zoccola

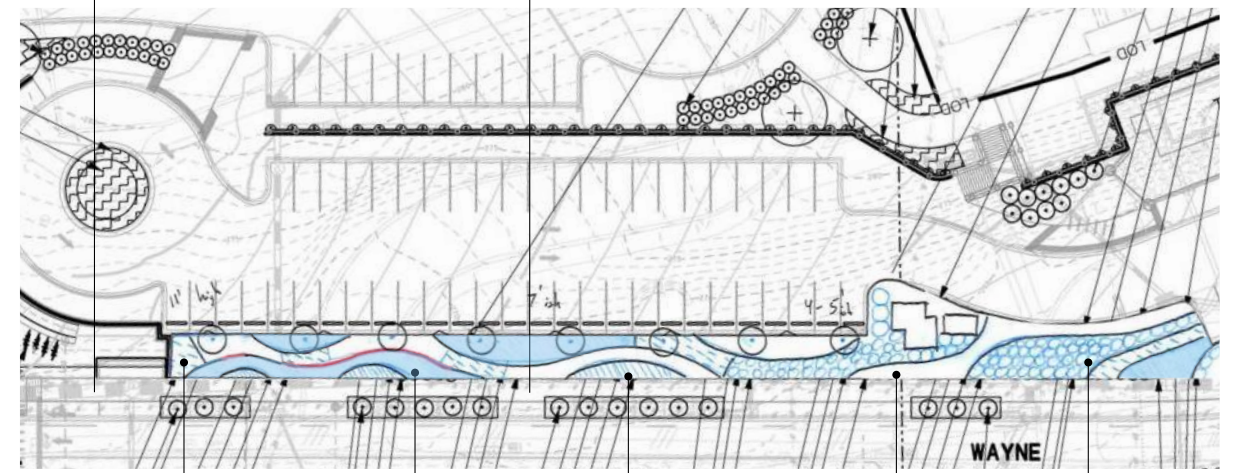
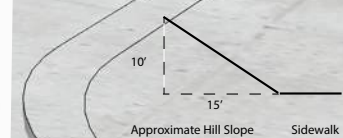
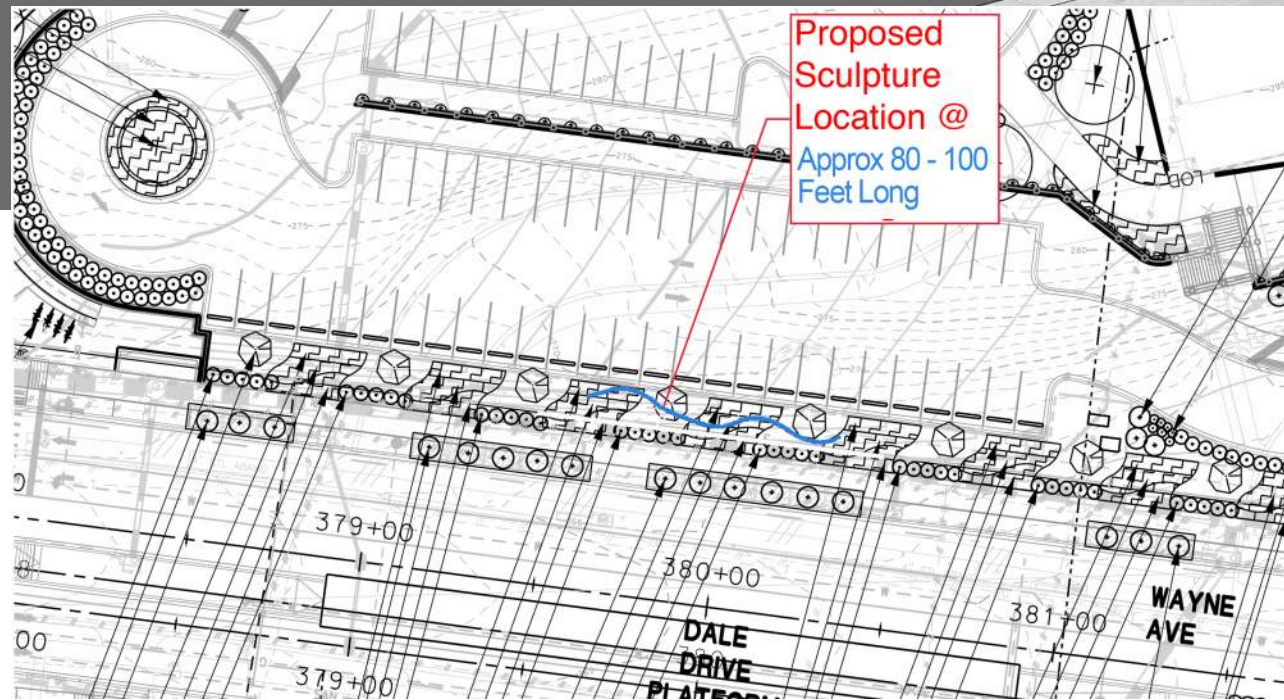
PLT4-S-808-D Dale Drive Station



13 art glass panels with local tree and water imagery.



Some inspirations for art proposal: Sligo Creek and local trees.



- Taller Grasses (3'-5')
- Low Perennial A (1'-3')
- Evergreen Groundcover (1'-2')
- Turf or Low Perennial B (1'-3')
- Various Shrubs