



# Glenridge/New Carrollton

CAT Meeting #3

November 29, 2018



**Tim Pinkerton**

PLTC Area 3 Construction Manager

**Shaquanna Shields**

PLTC Communications Supervisor



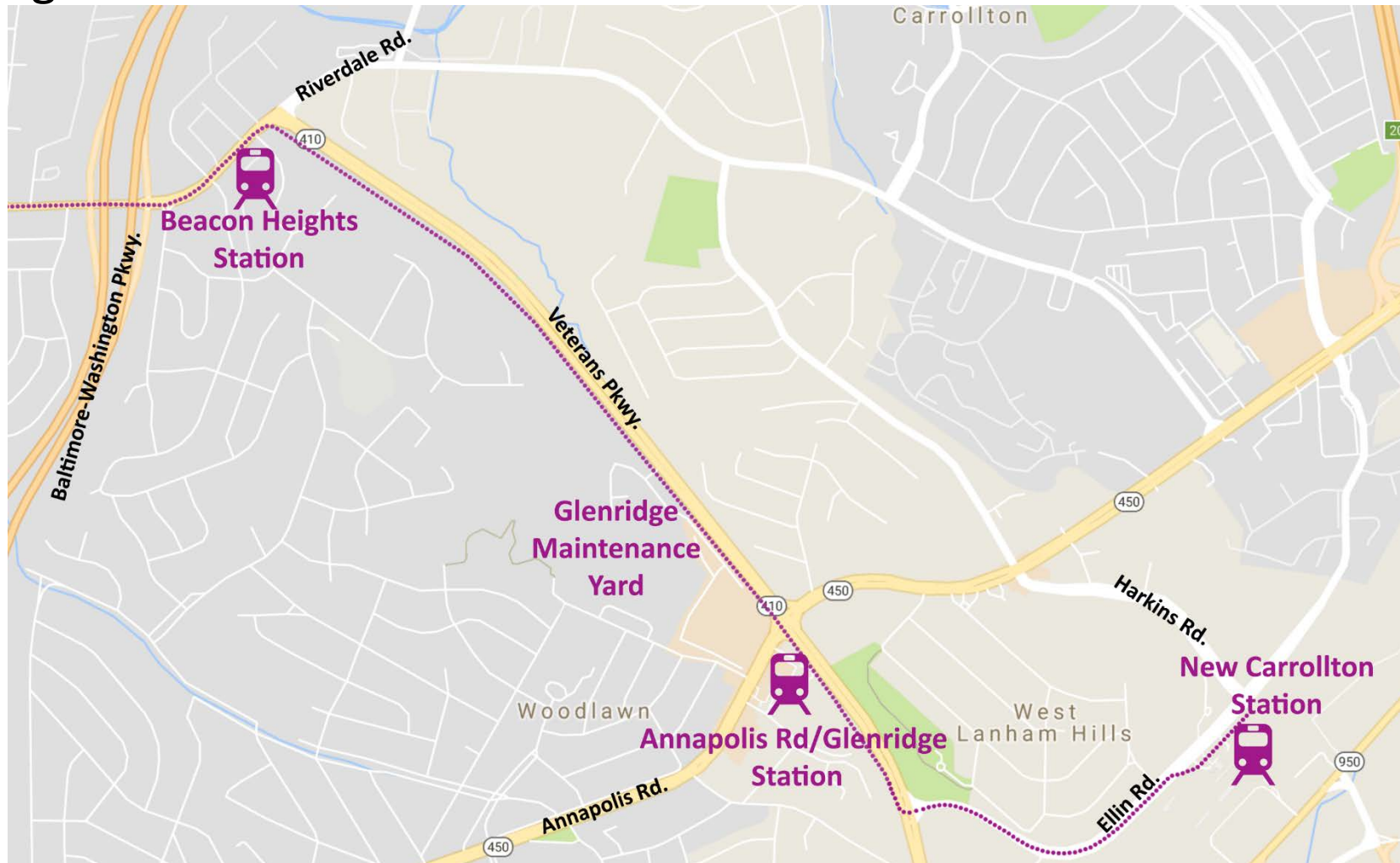
## MEETING OVERVIEW

- Construction Progress Overview
- 6-month Look Ahead
  - Veterans Pkwy.
  - Glenridge Yard
  - Ellin Rd. Detour
- Maintenance of Traffic & Pedestrian Safety
- Construction Work Hours
- Questions & Answers



## GLENRIDGE/NEW CARROLLTON CAT SEGMENT

Beacon Heights to New Carrollton Metro







## COMPLETED/ONGOING CONSTRUCTION WORK

- Segment Wide
  - Utility relocation work ongoing
  - Erosion and sediment controls installed
  - Stormwater management for construction installed
  - Tree clearing ongoing
- Veterans Pkwy.
  - Closed southbound right-hand lane to traffic
  - Took possession of project limit-of-disturbance (LOD) at the Giant parking lot to house construction equipment and build retaining walls.
- Glenridge Yard
  - Began excavation for site pad and utilities
- Ellin Rd.
  - Phase I: road closed for construction on October 1, 2018
  - Long-term detour is active



*Wall installation along Veterans Pkwy.*





## VETERANS PKWY. PROGRESS PHOTOS

- Building earth benches for retaining wall installation along Veterans Pkwy.







## GLENRIDGE YARD PROGRESS PHOTOS

- Site grading, initial foundation excavation, and underground utility installation work for the Glenridge Operation and Maintenance Facility.







## ELLIN RD. PROGRESS PHOTOS

- The first phase of construction on Ellin Rd. between Veterans Pkwy. and Hanson Oaks Dr. requires a closure for utility relocation and erosion/sediment control installation.







## VETERANS PKWY. 6-MONTH LOOK AHEAD

- Retaining wall construction
- Utility relocation
- Extending lane closure on Veterans Pkwy. from Glenridge Yard to Ellin Rd. (winter 2019)







## GLENRIDGE YARD 6-MONTH LOOK AHEAD

- Contractor mobilization for the Glenridge Operation and Maintenance Facility
- Underground utility installation continues
- Excavation for the Glenridge Operation and Maintenance Facility
- Erosion and sediment control
- Stormwater management installation
- Structural steel placements for the Glenridge Operation and Maintenance Facility







## ELLIN RD. 6-MONTH LOOK AHEAD

- Erosion and sediment control installation
- Demolition of road pavement
- Stormwater management
- Utility relocation
- Install sub-structure elements for power and communication feeds for future train operations

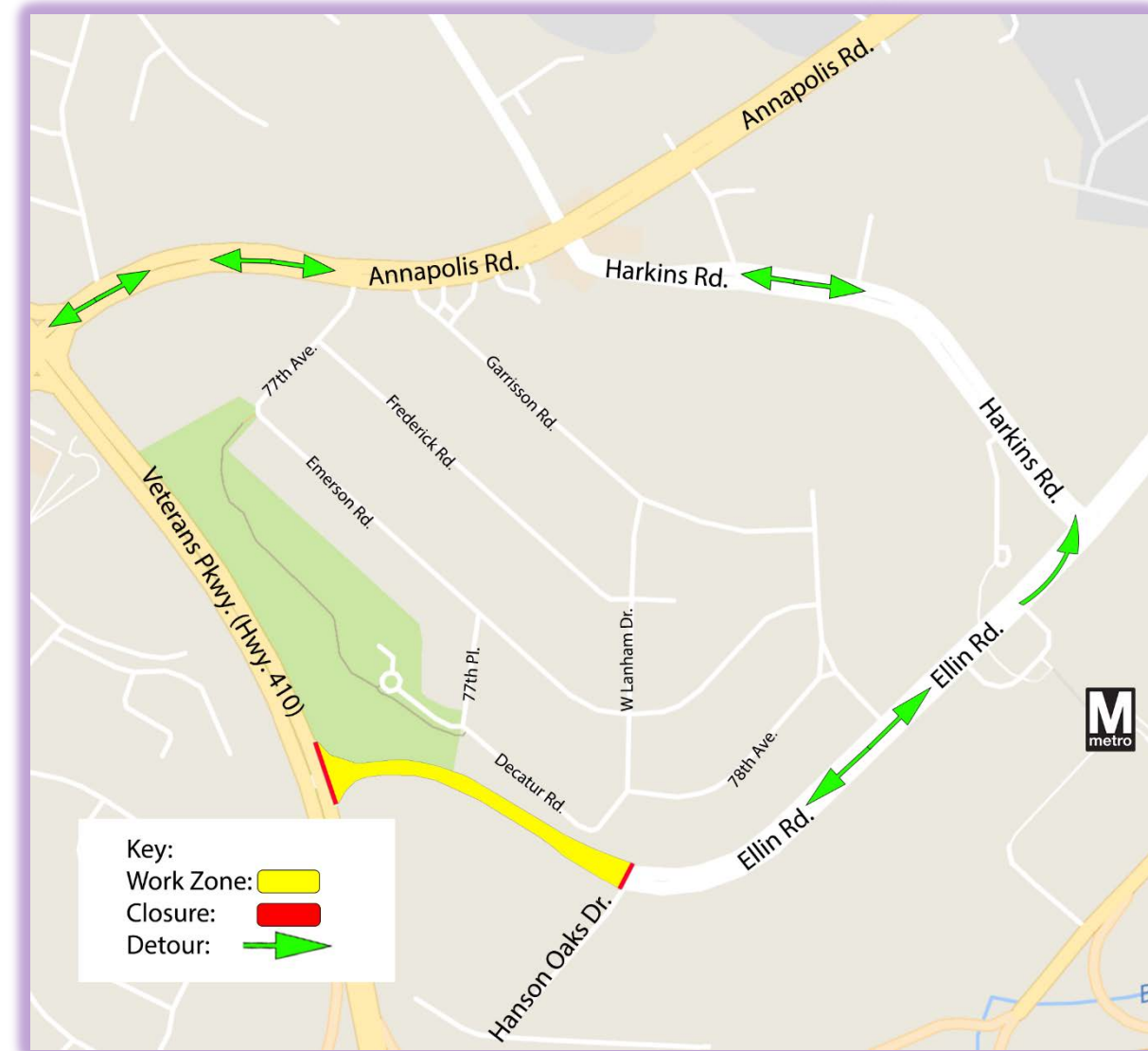






## ELLIN RD. PHASE I DETOUR - ACTIVE

- Ellin Rd. between Veterans Pkwy. and Hanson Oaks Dr. closed October 1, 2018 for approximately one year
- Closure is required to relocate utilities in the road and to construct facilities necessary for the Purple Line







## MAINTENANCE OF TRAFFIC – WHAT TO EXPECT

- Existing traffic patterns will change as work occurs, as needed
- Work may occur on both sides of the road and across roadways
- When a lane closure is required, a notice will be distributed via text and email (sign-up required through [purplelinemd.com](http://purplelinemd.com))
- Orange cones and barrels (temporary barricades) will be in place
- Flag-person, when required, will direct traffic
- Underground utility work may require temporary road plates





## PEDESTRIAN SAFETY

- Work zones will be clearly marked and the public should not enter them
- Pedestrian detours will be clearly signed
- When closures occur, alternate access will be provided
- Pedestrian crossings will be maintained
- ***Pedestrians should obey construction signage and keep out of work zones***







## CONSTRUCTION WORK HOURS

- Standard work week is 40 hours
- Make-up / maintenance day will be Saturdays, as required
- Typical day shift: 7 a.m. – 5 p.m.
- Typical night shift: 8 p.m. – 4:30 a.m.
- Typical traffic lane closure: 9 a.m. – 3 p.m.

Public will be notified through notifications on [purplelinemd.com](http://purplelinemd.com) for:

- Utility shutdowns
- Road/driveway closures
- Blasting/pile driving
- Night work
- Weekend work
- Major lane closures

**PURPLE LINE**  
TRANSIT PARTNERS  
CONSTRUCTION INFORMATION

Home About the Project Public Involvement Construction Community Advisory Teams (CATs) Kids Page Contact Us

Select Language

For Construction Inquiries Call  
240-424-5325

For Emergencies  
Please Call 911

Subscribe For Updates  
In English

Subscribe For Updates  
In Spanish

**Construction Info**

The Purple Line project is a new 16-mile east-west light rail line that operates mostly on the surface with 21 stations and connects New Carrollton in Prince George's County and Bethesda in Montgomery County. It also provides a direct connection to four Washington Metrorail lines, three MARC commuter rail lines, Amtrak Northeast Corridor and regional and local bus services.



## STAY UP TO DATE ON PURPLE LINE PROGRESS

- Sign up for construction notices at [purplelinemd.com](http://purplelinemd.com)
- For construction-related questions and concerns, contact PLTP
  - Email at: [outreach@pltcllc.com](mailto:outreach@pltcllc.com)
  - 24/7 hotline at 240-424-5325
- For general project questions and comments, contact MTA public outreach
  - Email at: [outreach@purplelinemd.com](mailto:outreach@purplelinemd.com)
  - Call: 443-451-3706 or 443-451-3705 (Español)