



Talbot Avenue Bridge Design Meeting

August 30, 2018



Talbot Avenue Bridge Historic Status

- Talbot Avenue Bridge was determined to be eligible for the National Register of Historic Places in 1997. It is also a contributing element of the Metropolitan Branch of the B&O Railroad.
- As part of Section 106 compliance during Purple Line project planning, the Maryland Historical Trust (MHT) concurred that removing the bridge was an adverse effect.





Talbot Avenue Bridge Historic Documentation

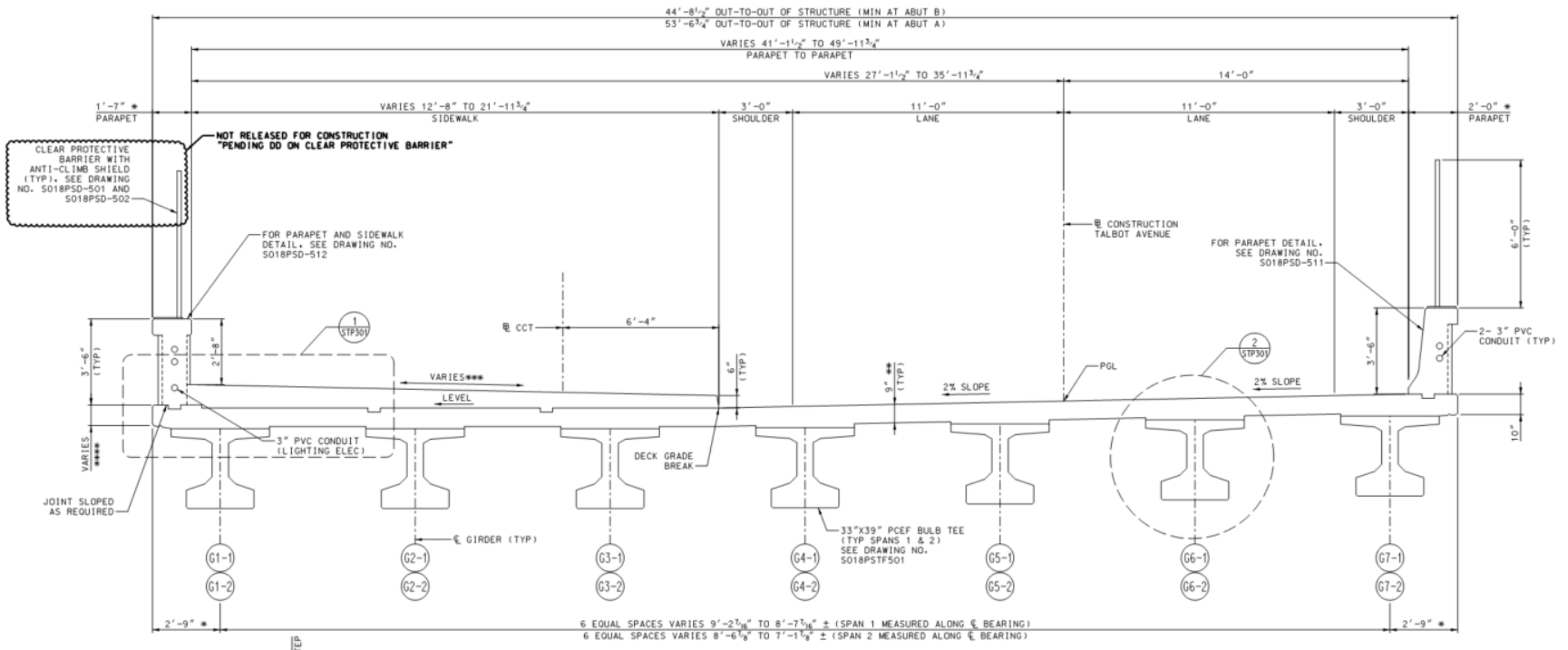
- As part of the Purple Line Programmatic Agreement, an intensive-level Maryland Inventory of Historic Properties (MIHP) form is being completed for Talbot Avenue Bridge. It will be submitted to the Maryland Historical Trust in a few weeks.
- This documentation, which includes photography, is mitigation for the adverse effect to Talbot Avenue Bridge and the Metropolitan Branch of the B&O Railroad.
- The MIHP form includes historic context and an assessment that the bridge is eligible for its historic significance within the segregated neighborhood and not only as an example of plate and rolled girder bridge.

Talbot Bridge

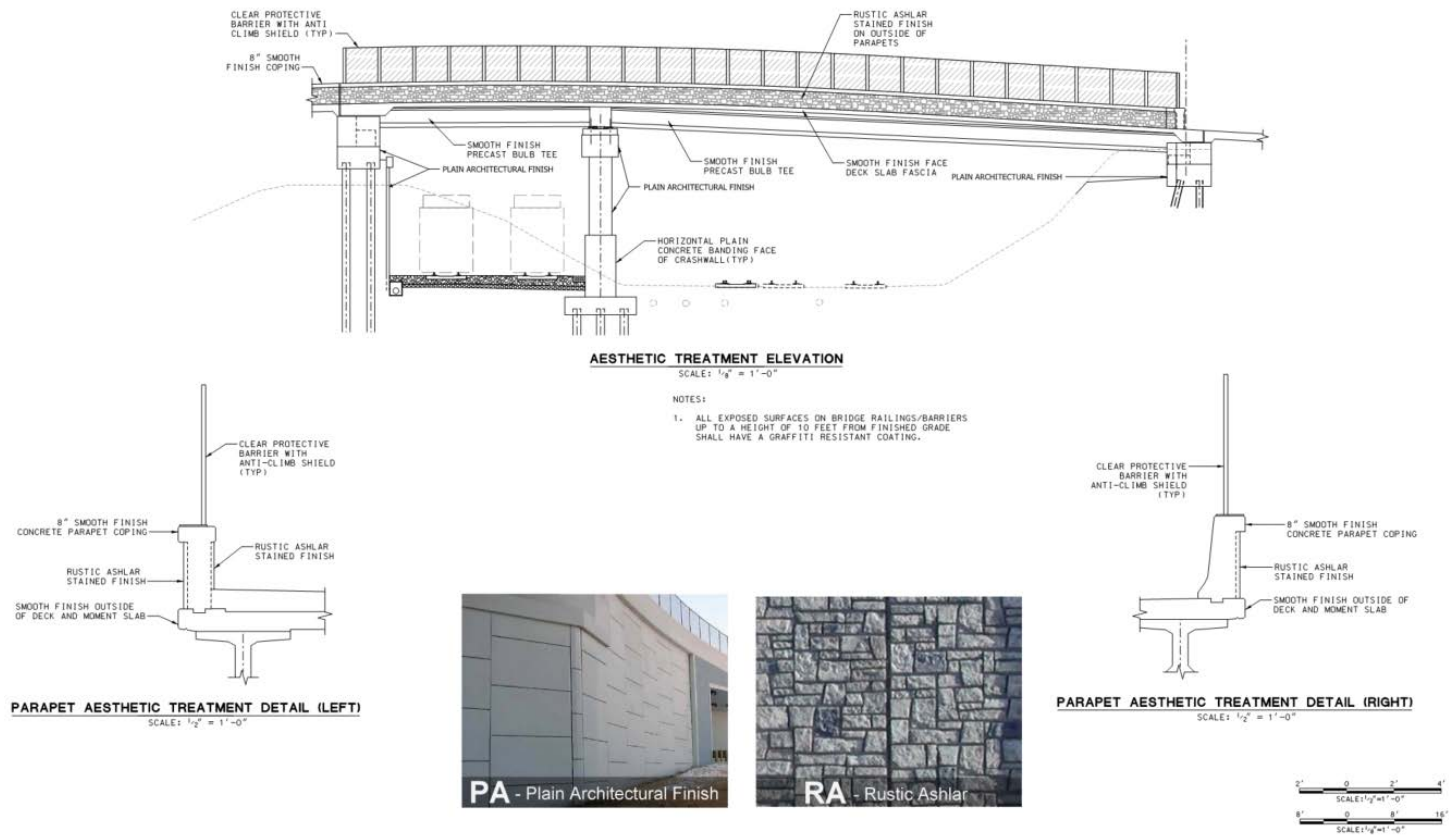
August 30, 2018



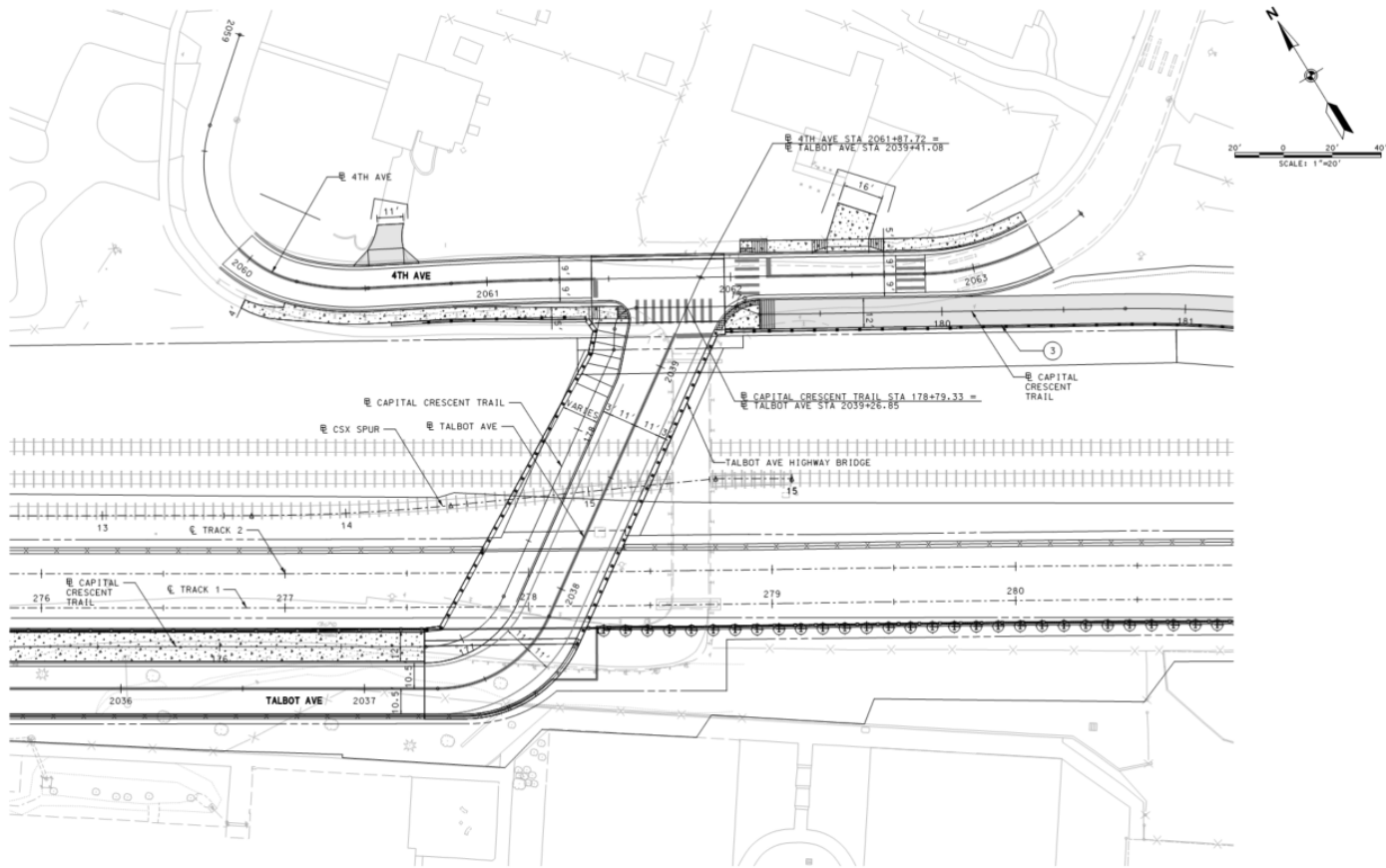
Talbot Bridge Superstructure Typical



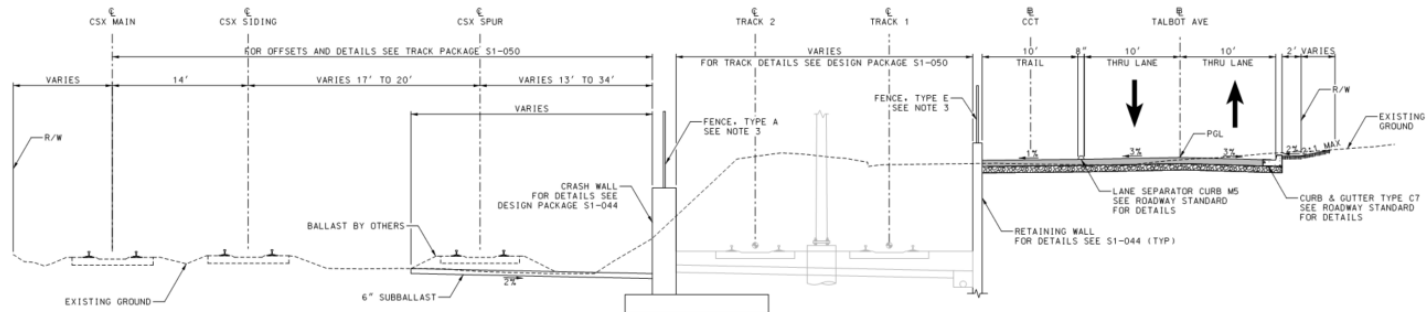
Aesthetics



Plan

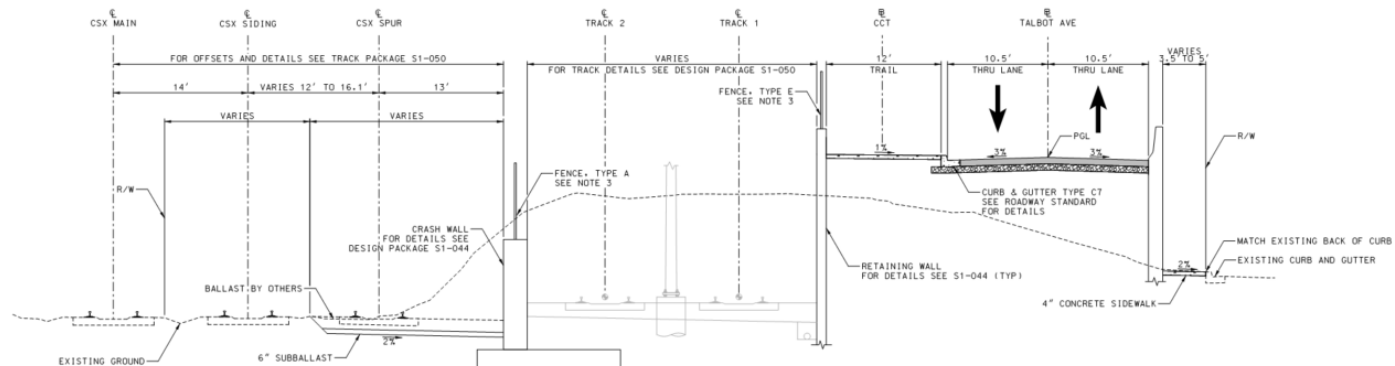


Talbot Ave. Typical Section



CAPITAL CRESCENT TRAIL & TALBOT AVE

STA 170+16 TO STA 173+72 (CCT)
STA 2030+75 TO STA 2034+12 (TALBOT)

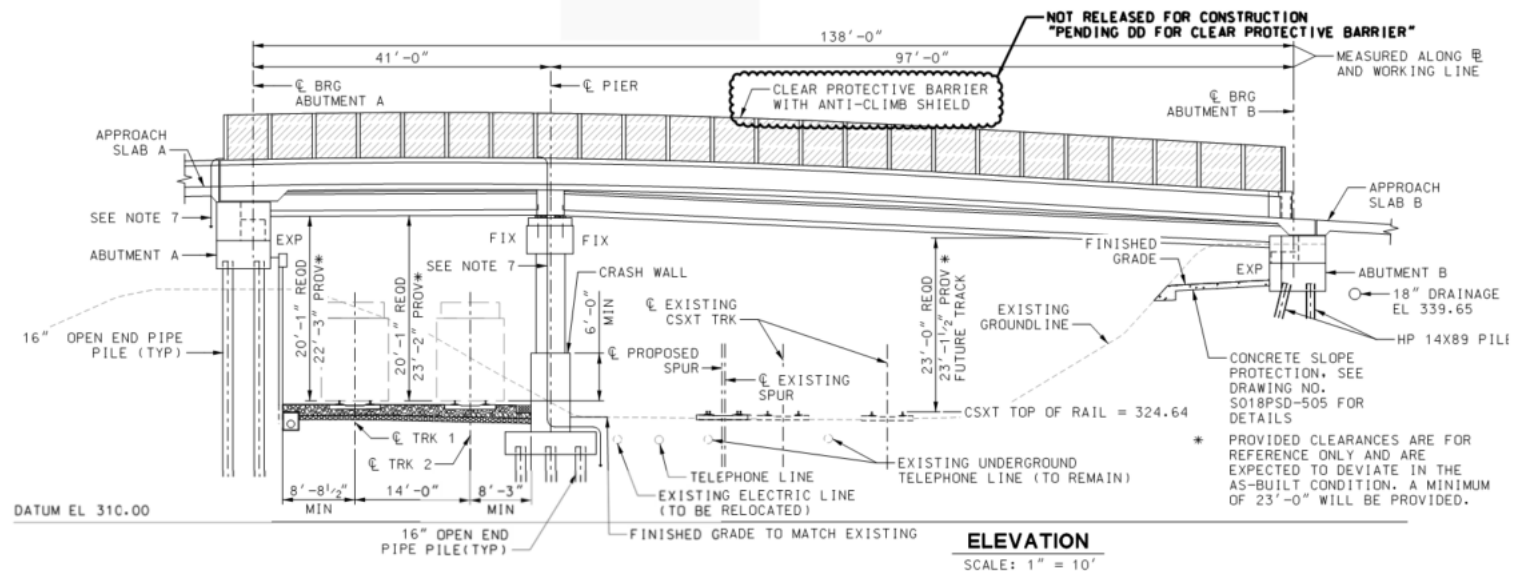


CAPITAL CRESCENT TRAIL & TALBOT AVE

STA 173+72 TO STA 176+84 (CCT)
STA 2034+12 TO STA 2037+25 (TALBOT)

- NOTES:
1. FOR ROADWAY STANDARDS SEE CW-33 FOR DETAILS.
 2. LINES, DIMENSIONS AND TEXT SHOWN IN GREY SHADING ARE FOR INFORMATION ONLY.
 3. FENCE LOCATED ON STRUCTURES/RETAINING WALLS. SEE S1-044 AND S1-070 FOR LIMITS AND DETAILS.

Bridge Elevation



Walls and Fencing

