



# Bethesda/Chevy Chase

CAT Meeting #4

June 5, 2019



## **Mike Madden**

MDOT MTA Purple Line Deputy Project Director

## **Carla Julian**

PLTC Sr. Manager

Public Affairs/Community Outreach

## **Jim Jewell**

PLTC Area 1 Manager



# MEETING OVERVIEW

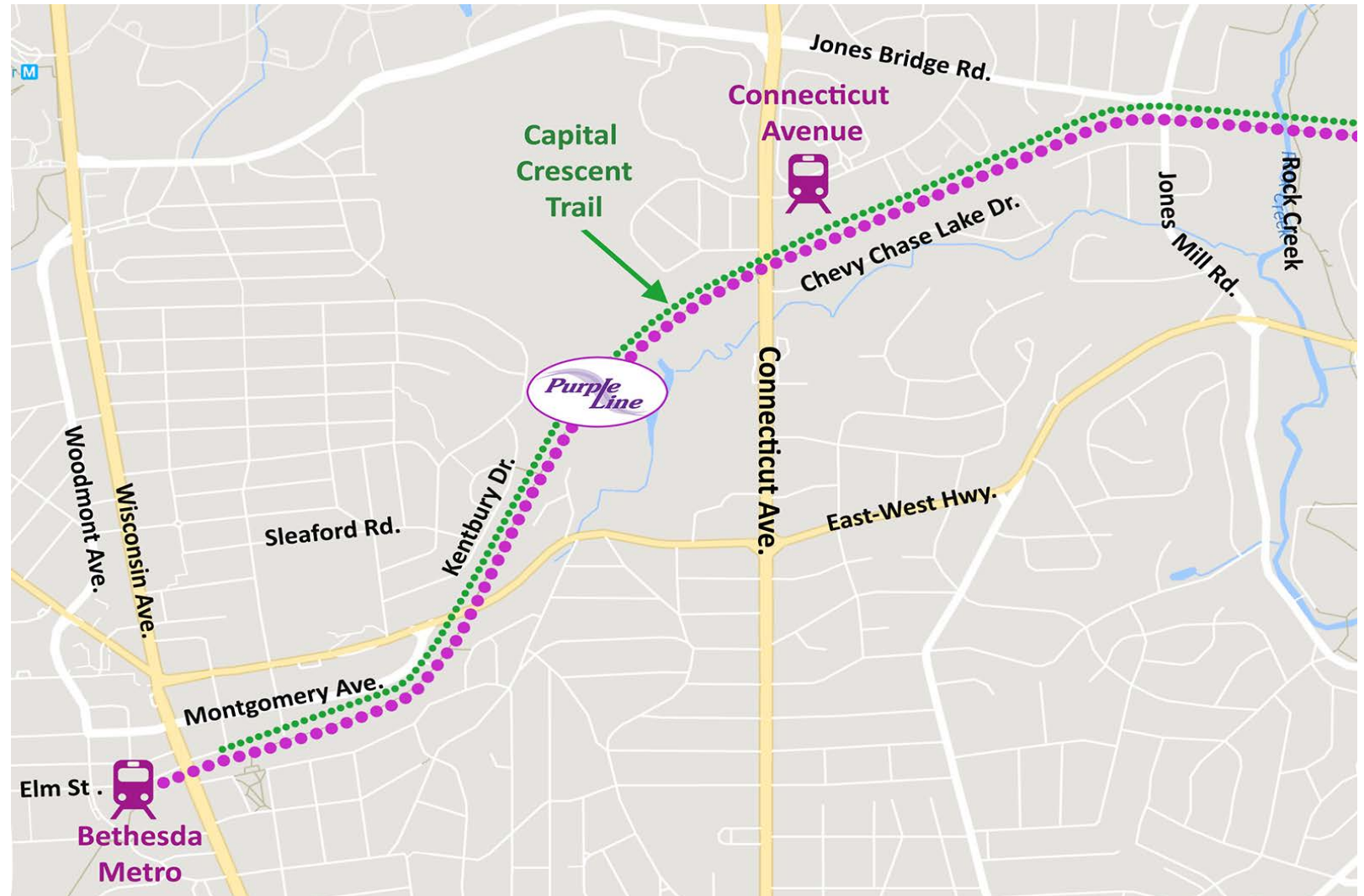
- **Purple Line Project Update**
  - Art-in-Transit
- **Construction Progress Overview**
  - Work Completed
  - Progress Photos
  - 6-Month Look Ahead
- **Bethesda Shaft**
- **Capital Crescent Trail Access**
- **Maintenance of Traffic & Pedestrian Safety**
- **Construction Work Hours**
- **Business Outreach**
- **Updated Purple Line Website**
- **Questions & Answers**



# BETHESDA/CHEVY CHASE CAT SEGMENT

Stations in this segment:

- Bethesda Metro
- Connecticut Avenue







# PURPLE LINE PROJECT UPDATE

- The Purple Line is being delivered as a Public-Private Partnership (P3) to finance, design, construct, operate, and maintain
- Construction is underway throughout the 16.2-mile corridor
  - Design: 85% complete
  - Construction: 15% complete
- Right-of-way acquisitions are nearing completion
- MDOT MTA's goal is for service to begin late 2022



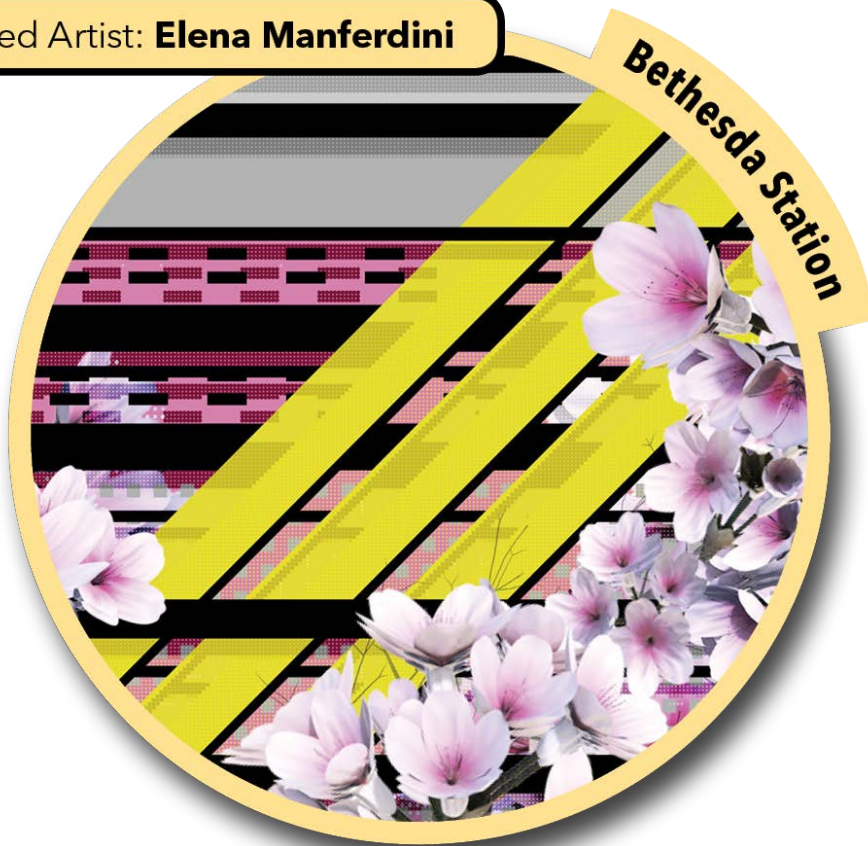
# ART-IN-TRANSIT

- The mission of the Purple Line Art-In-Transit program is to make public art an integral element of the project.
- Art will be incorporated into stations to enrich the aesthetics of the light rail system and support neighborhood identities.
- Artists have been selected, art proposals have been refined based on input received, and contracts are being negotiated.
- Artwork will be installed in its respective locations between 2020 – 2021.

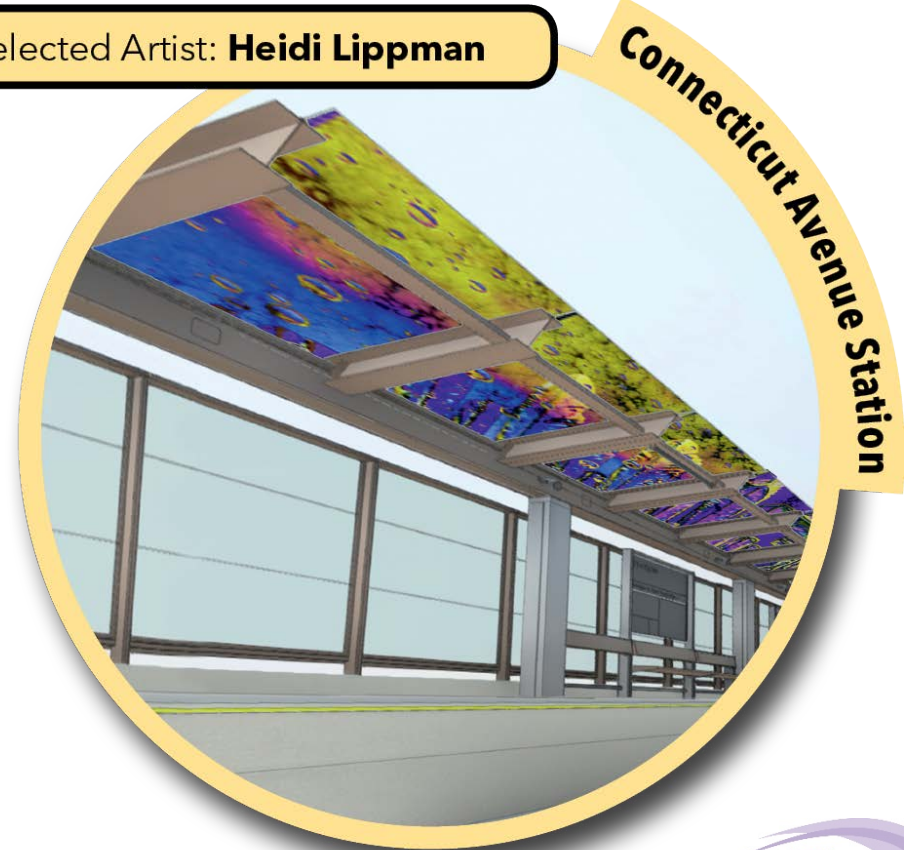


# SELECTED ARTISTS

Selected Artist: **Elena Manfredini**



Selected Artist: **Heidi Lippman**







## BETHESDA METRO

The theme of this artwork is bloom. The cherry blossom is the first reminder that spring has arrived and can be seen throughout Maryland and Washington DC areas. The art will recreate the time of year where the city is filled with cherry blossoms and give people an opportunity to pause in the station and take it all in. The art will be on the walls in the station that will be stationary but based on the viewers movement will move and animate with the appearance of the blossoms blooming.

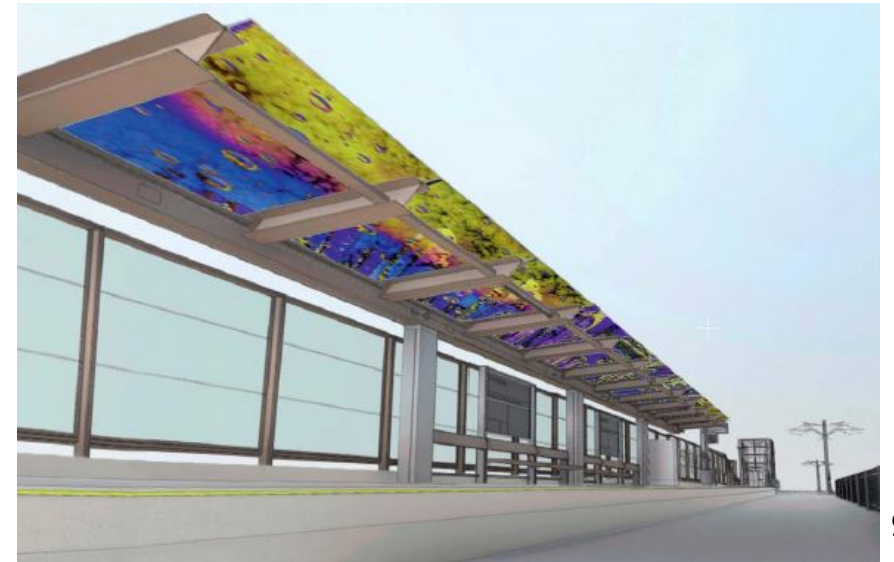






## CONNECTICUT AVE.

The theme of this artwork is “Phase Change - Memories of a Recent Lake” to remember the lake that once was located in Chevy Chase. The artwork will include two glass canopies on the platform and on the building at the station. The pattern will be derived from melting water crystals to naturally infer transportation and the lake. The pieces are highly responsive to light and will provide continuous surprises on how it will interact with the weather and time of day.





## WORK CONDUCTED OVER THE PAST 6 MONTHS

- Segment-wide
  - Utility relocations
  - Installation of erosion and sediment controls
  - Stormwater management facilities for construction
  - Tree clearing
  - Excavation of dirt and rock
- Bethesda Shaft
  - Excavation continued at the shaft, 100 ft. of 165 ft. complete
  - Blasting occurred when necessary, with notice to the public and coordination with WMATA
    - Blasting is not planned to occur again until August or September of 2019



## WORK CONDUCTED OVER THE PAST 6 MONTHS (CONTINUED)

- Pearl Street
  - Water and sewer utility relocations
- East-West Highway
  - Communication directional bores installed
  - Installation of retaining walls
- Sleaford Road
  - Installation of sanitary sewer casing pipe
  - Installation of retaining walls



## WORK CONDUCTED OVER THE PAST 6 MONTHS (CONTINUED)

- Columbia Country Club
  - West golf cart underpass installed and reopened for use
  - East golf cart underpass installed
- Connecticut Avenue
  - Overhead and underground utility relocations
- Jones Mill Road
  - Overhead utility relocation
- Rock Creek Park
  - Demolition of pedestrian bridge
  - Storm drain installation
  - Retaining wall installation





# AERIAL VIEW OF BETHESDA DEVELOPMENT

- Bethesda station box has been constructed by Carr and turned over to the Purple Line as of June 2018

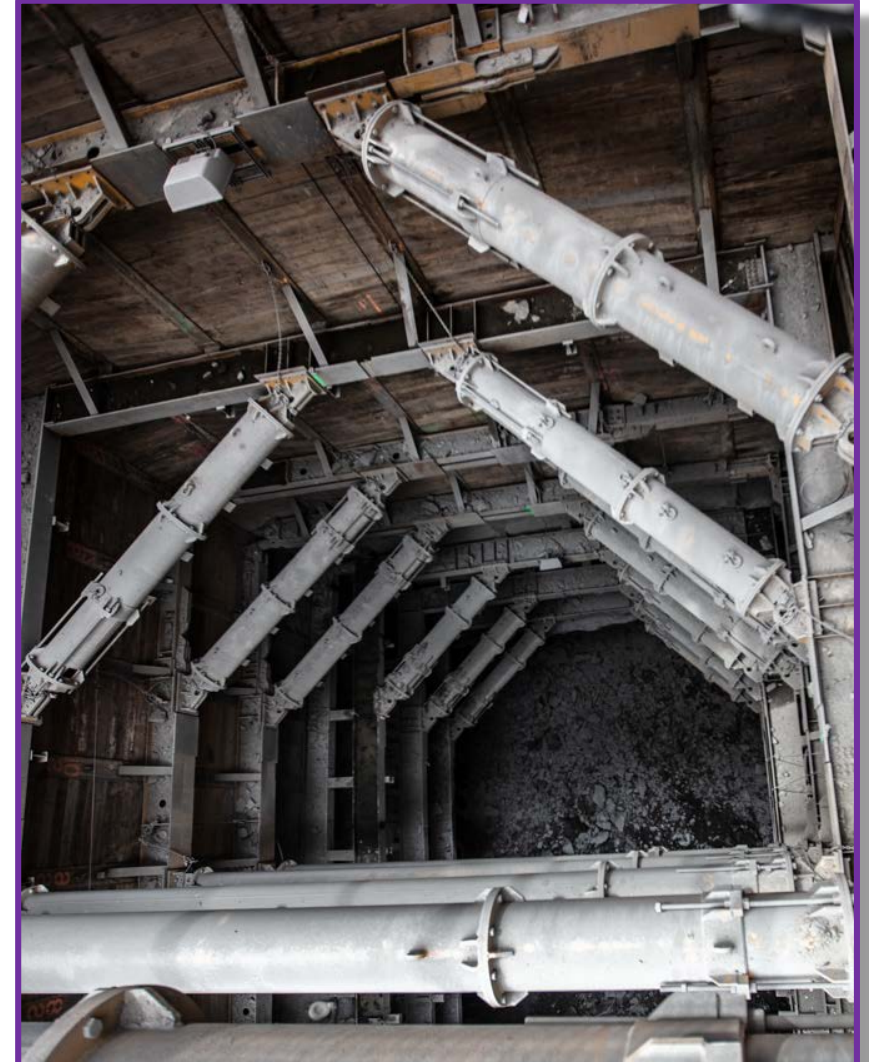
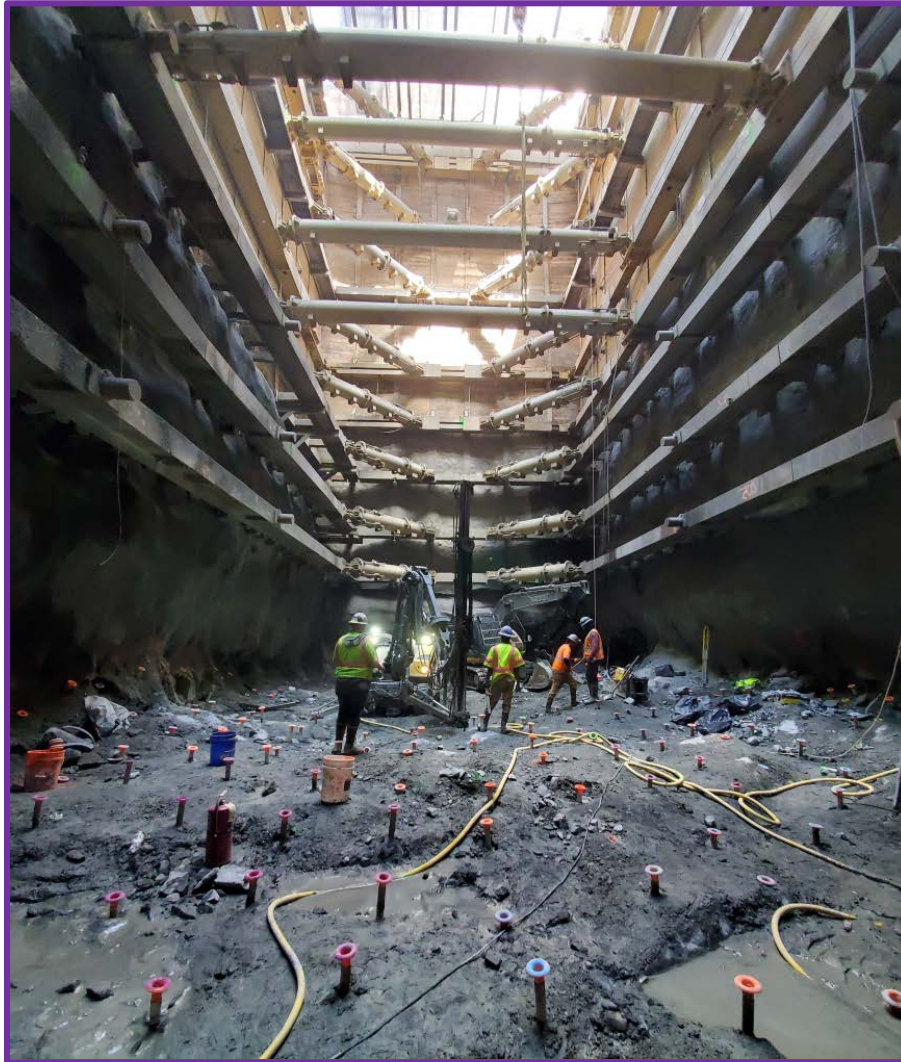






## BETHESDA SHAFT PROGRESS PHOTOS

- Blasting operations (pictured left)
- Excavated shaft (pictured right)

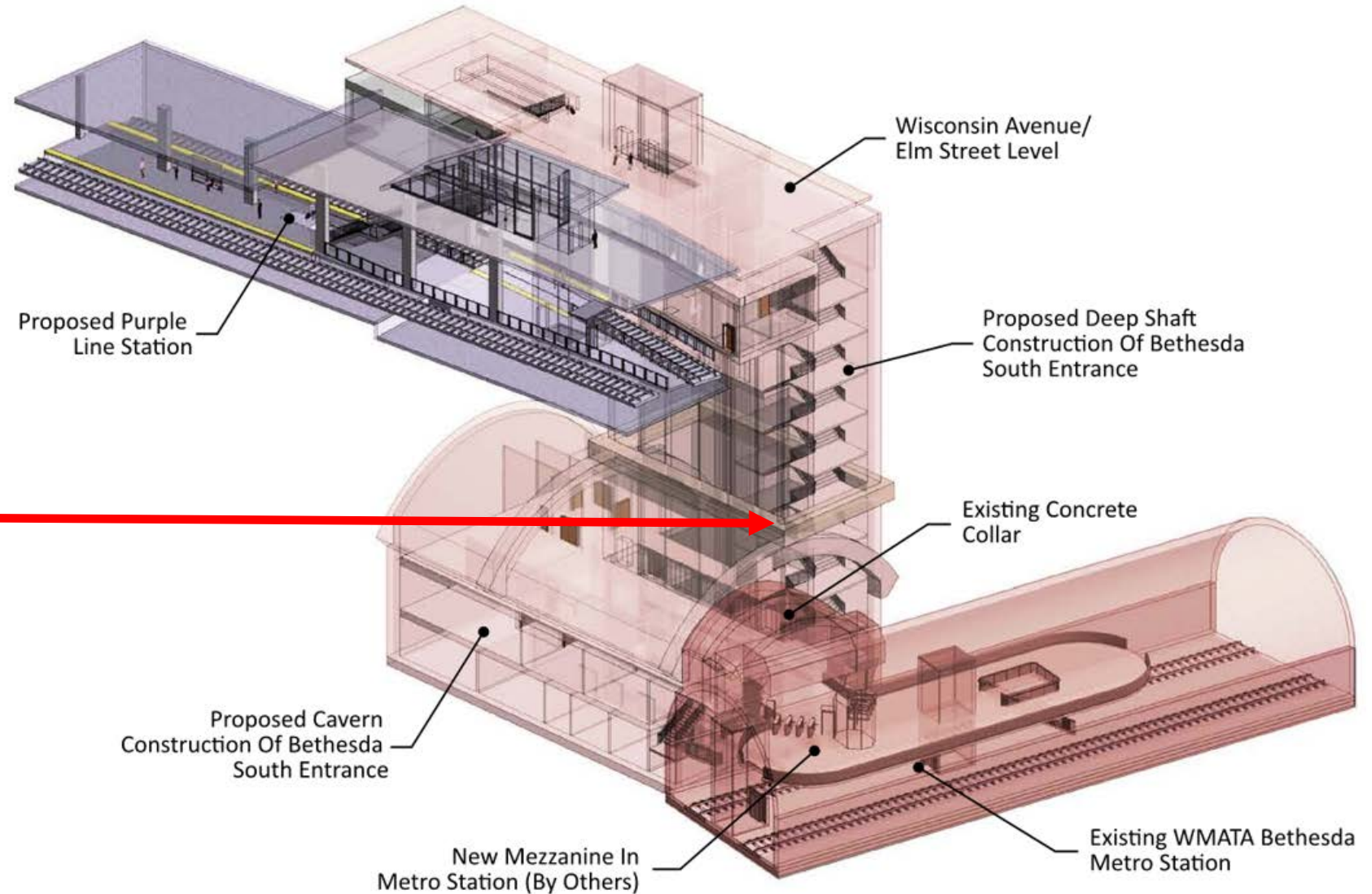






## BETHESDA SHAFT

- Connects Purple Line to the existing WMATA Bethesda Metro Station



Current Depth 100 ft.





## EAST-WEST HIGHWAY PROGRESS PHOTO

- Installation of drilled shafts for retaining walls on the Georgetown Branch Trail below East-West Highway







# COLUMBIA COUNTRY CLUB PROGRESS PHOTO

- Construction of golf cart underpass





# CONNECTICUT PROGRESS PHOTOS

- Overhead utility relocations







# ROCK CREEK PARK PROGRESS PHOTOS

- Rock Creek pedestrian bridge demolition





## 6-MONTH LOOK AHEAD

- Segment-wide
  - Overhead and underground utility work will continue
  - Constructing drainage systems
- Bethesda Shaft
  - Pouring of the concrete lining for the shaft, beginning June 2019
    - This will require concrete delivery to the site
  - Blasting is planned to occur in August/September of 2019 to begin excavation of the cavern that will connect the Purple Line to the Red Line





## 6 MONTH LOOK AHEAD (CONTINUED)

- Pearl Street
  - Storm drain system and box culvert installation
  - Waterline relocation
  - Retaining wall construction
- East-West Highway
  - Utility relocations will continue
  - Lane closures will be ongoing to access Sleaford Rd.
- Sleaford Road
  - Sanitary sewer relocation
  - Storm drain system installation
  - Retaining wall construction



## 6 MONTH LOOK AHEAD (CONTINUED)

- Columbia Country Club
  - Grading and landscaping
  - Construction of retaining walls
  - Storm drain installation
- Connecticut Avenue
  - Complete overhead utility relocations
  - Complete underground communication utilities
  - Patching of asphalt
  - Pile driving for the foundations of the new Light Rail Train (LRT) & Capital Crescent Trail (CCT) bridge
  - Construction of the abutments for the CCT and LRT bridges
  - Installation of retaining walls



## 6 MONTH LOOK AHEAD (CONTINUED)

- Jones Mill Road
  - New temporary traffic pattern to be put in place in order to begin construction of the underpass scheduled to occur on or about July 7, 2019
  - Installation of support of excavation (SOE)
  - Mass excavation for underpass structure
  - Storm drain pipe and structure installation
  - Installation of retaining walls and soil nail walls
- Rock Creek Park
  - Remaining structure demolition
  - Installation of the instream pipe diversion and temporary bridge for the soil nail wall
  - Installation of sheeting for SOE
  - Installation of retaining walls
  - Construction of the abutments for the CCT and Purple Line bridges



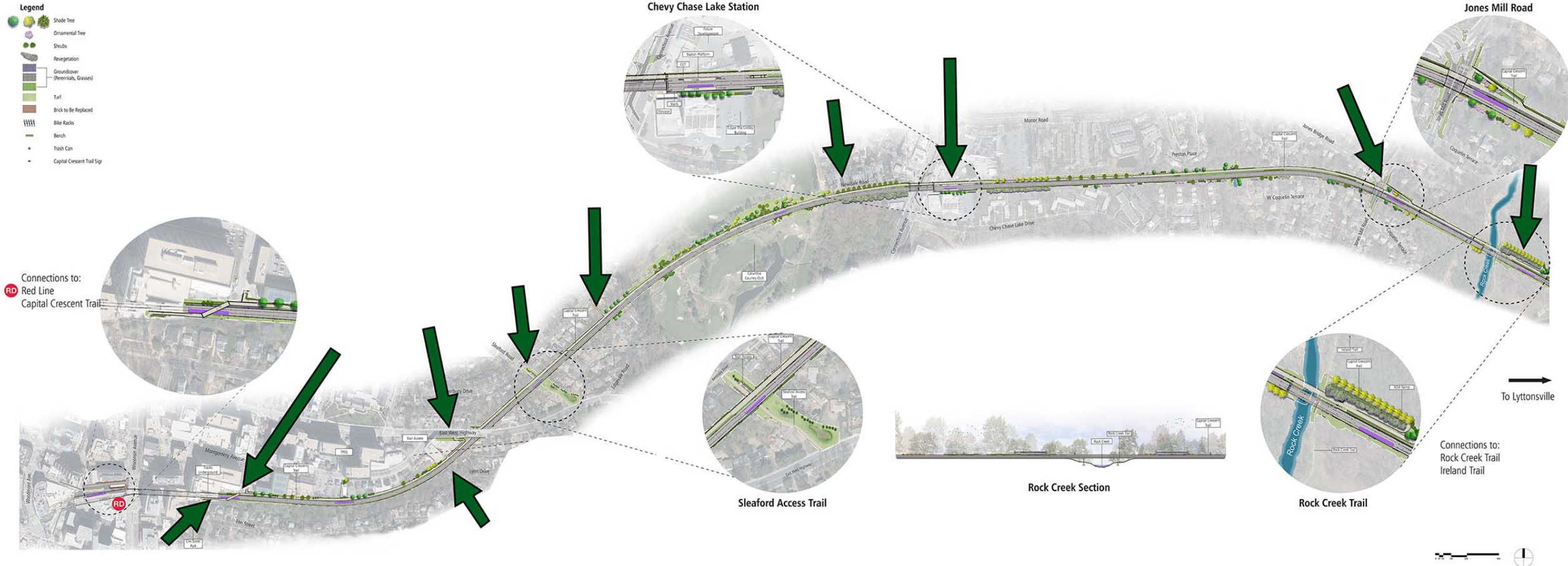
## CAPITAL CRESCENT TRAIL (CCT)

- The Purple Line is designing and building the CCT
- Montgomery County is providing design input, owns, and will maintain the CCT once it's open and operational
- The CCT will reopen when construction is complete
- Access points listed from west to east will include (detailed on following slides):
  - Elm Street
  - Pearl Street
  - East-West Highway
  - Sleaford Road
  - Kentbury Drive
  - Newdale Road
  - Connecticut Avenue
  - Jones Mill Road
  - Rock Creek Park

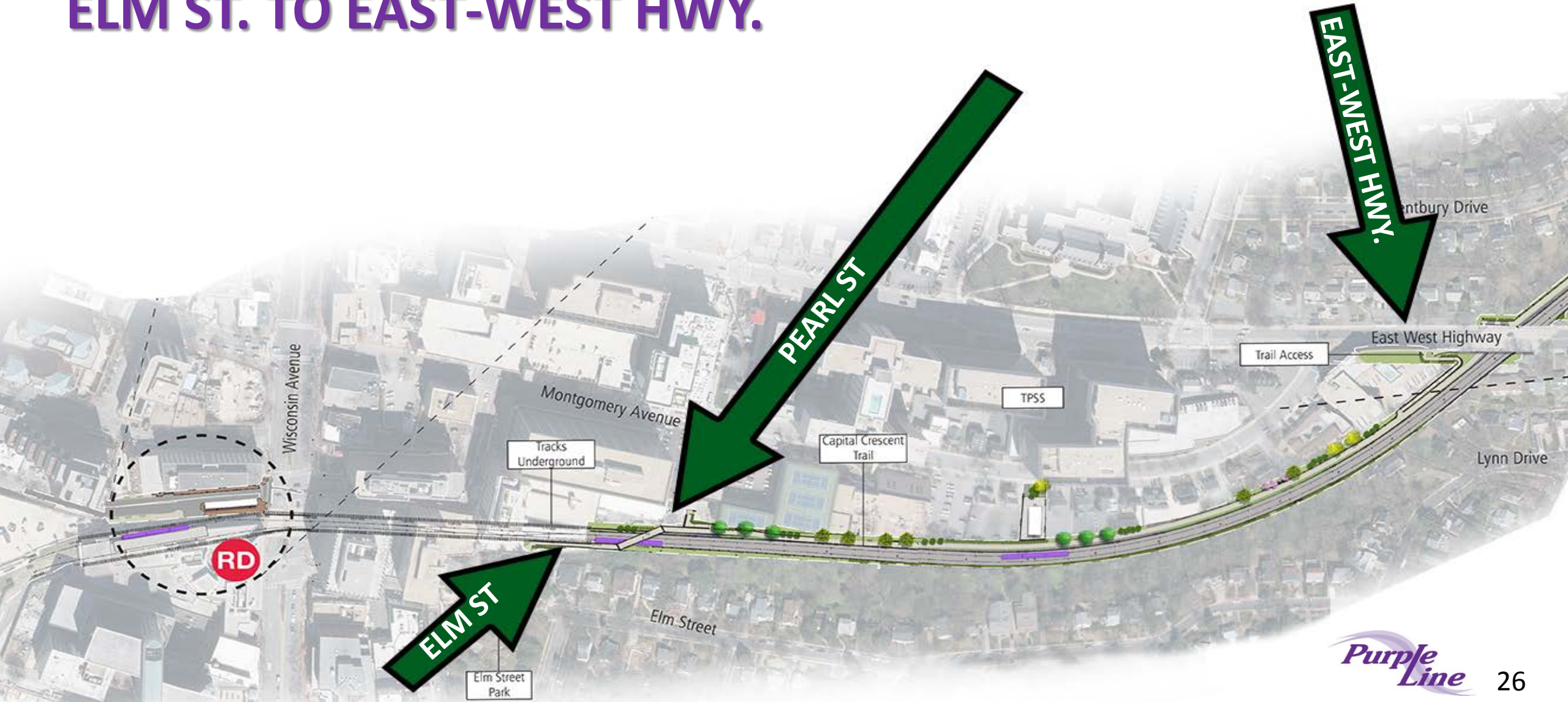




# CCT ACCESS POINTS



# CCT ACCESS POINTS ELM ST. TO EAST-WEST HWY.

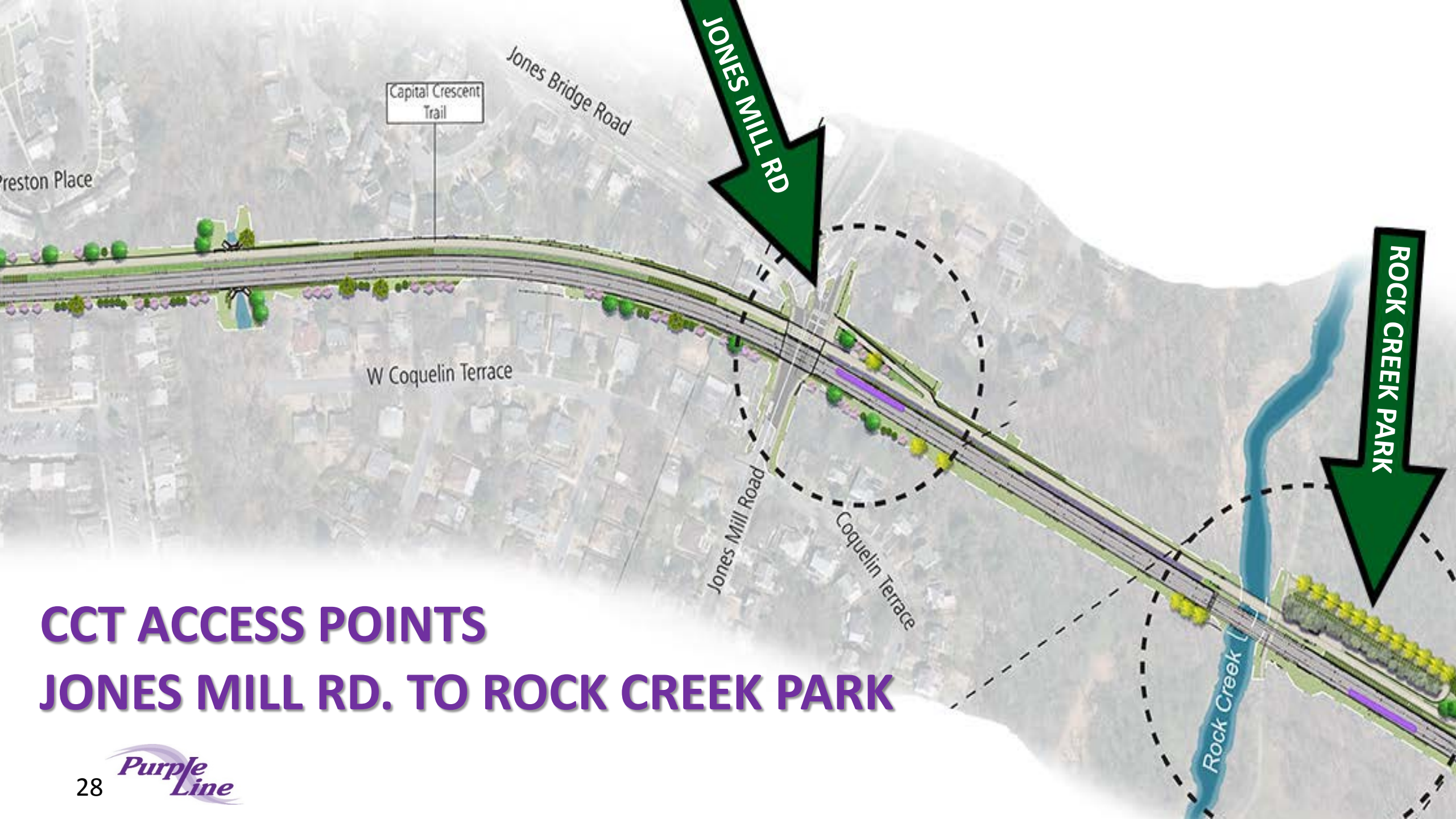




# CCT ACCESS POINTS SLEAFORD RD. TO CONNECTICUT AVE.







Capital Crescent  
Trail

Jones Bridge Road

Preston Place

W Coquelin Terrace

Jones Mill Road

Coquelin Terrace

Rock Creek

JONES MILL RD

ROCK CREEK PARK

# CCT ACCESS POINTS JONES MILL RD. TO ROCK CREEK PARK





## MAINTENANCE OF TRAFFIC – WHAT TO EXPECT

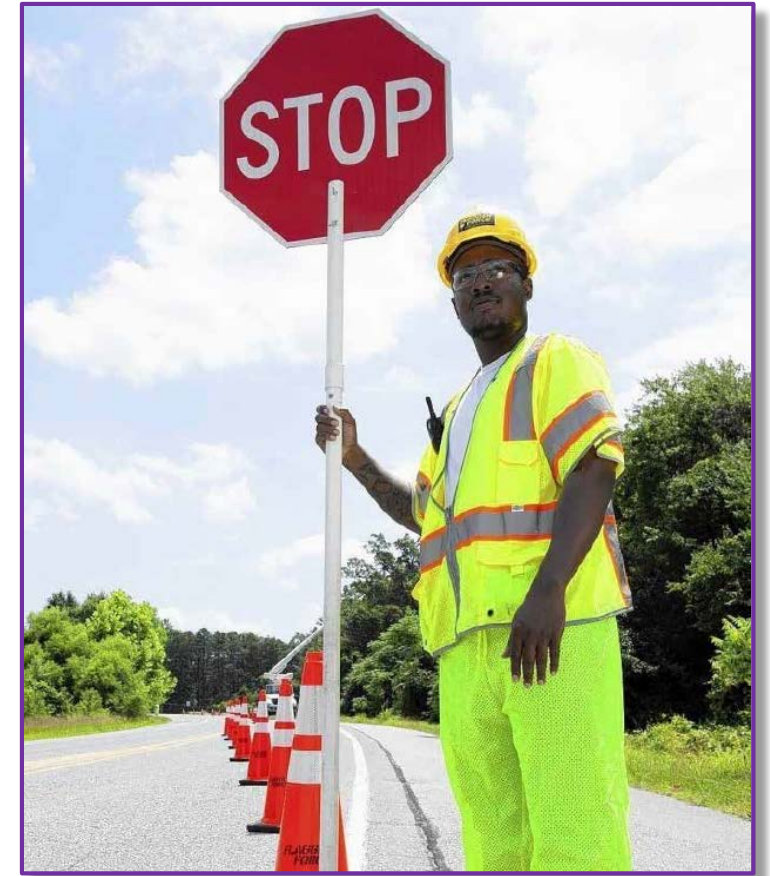
- Existing traffic patterns will change as work occurs, as needed
- Work may occur on both sides of the road and across roadways
- When a lane closure is required, a notice will be distributed via text and email (sign-up required through [purplelinemd.com](http://purplelinemd.com))
- Orange cones and barrels (temporary barricades) will be in place
- Flag-person, when required, will direct traffic
- Underground utility work may require temporary road plates





## PEDESTRIAN SAFETY

- Work zones will be clearly marked and the public should not enter them
- Pedestrian detours will be clearly signed
- When closures occur, alternate access will be provided
- Pedestrian crossings will be maintained
- ***Pedestrians should obey construction signage and keep out of work zones***





## CONSTRUCTION WORK HOURS

- Typical day shift: 7 a.m. – 5 p.m.
- Typical night shift: 7 p.m. – 4:30 a.m.
- Make-up / maintenance day will be Saturdays, as required
- The public will be notified through notifications on [purplelinemd.com](http://purplelinemd.com) for:
  - Utility shutdowns
  - Road/driveway closures
  - Blasting
  - Pile driving
  - Night work
  - Weekend work
  - Major lane closures



## BUSINESS OUTREACH & COORDINATION

- The project's approach for business outreach consists of:
  - Engaging with those businesses potentially directly impacted by construction in the area
  - Understanding individual access and delivery requirements
  - Installation of "open for business" signage along the alignment
  - Coordination in English and Spanish (as needed)





## REVAMPED PURPLE LINE WEBSITE

- Redesigned website rolled out end of April 2019 that features:
  - New photo gallery of progress pictures and videos
  - New Factsheets
  - Landscape Plans
  - New FAQ Page
  - New Station Illustrations
  - Construction Updates
- Sign up to receive construction notifications via email or text





# STAY UP TO DATE ON PURPLE LINE PROGRESS

**Sign up for construction notices at [purplelinemd.com](http://purplelinemd.com)**

- For construction-related questions and concerns, contact PLTC
  - Email: [outreach@pltcllc.com](mailto:outreach@pltcllc.com)
  - 24/7 hotline at 240-424-5325
- For general project questions and comments, contact MTA public outreach
  - Email: [outreach@purplelinemd.com](mailto:outreach@purplelinemd.com)
  - Call: 443-451-3706 or 443-451-3705 (Para Español)

